

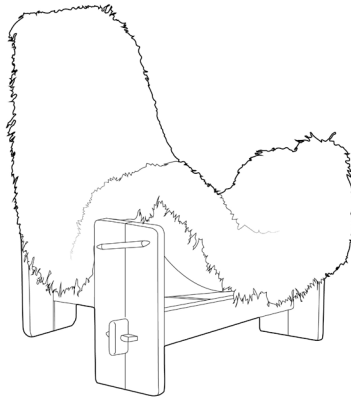
HANDMADE IN SAN FRANCISCO



COUP STUDIO

SLING CHAIR

## SLING CHAIR



ITEM NO.	DIMENSIONS	SEAT HEIGHT	WEIGHT
UP-CS-55-FUR	30" W x 35" D x 30" H	14"	20 lbs

GRADED-IN SHEEPSKIN

ITEM NO.	DIMENSIONS	SEAT HEIGHT	WEIGHT
UP-CS-55	30" W x 35" D x 30" H	14"	20 lbs

COL : Sheepskin Hides: 21 sq ft or 3 hides (Average hide size 6-8 sq ft)

Fabric requirement for backside of seat: 2 YARDS (plain 54" wide)

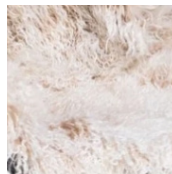
Fabric requirement for sling: 2 YARDS (54" wide canvas recommended)

### LEG FINISH

- WALNUT
- OILED WALNUT
- SADDLE
- NATURAL OAK
- MIDNIGHT
- MIDNIGHT GLOSS

### GRADED-IN SHEEPSKIN

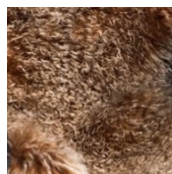
(Graded-in sheepskin includes matching tone-on-tone fabric)



CHAMPAGNE



TAUPE



CHESTNUT

### LEAD TIME

10-12 WEEKS

### ADDITIONAL INFO

Custom sizes & finishes available