

COUP D'ETAT

CATALOG 2024

AFTER EDITIONS
AGRIPA
BAROVIER&TOSO
BASSAMFELLOWS
BRENT WARR
CHRISTOPHER BOOTS
CHUCK MOFFIT
COUP STUDIO
COUP STUDIO FABRICS
COUP XX
DAMIAN JONES
DANIEL SHAPIRO
DAX SAVAGE
DE LA VEGA
DOUGLAS FANNING
EDWIN MALDONADO
ELAN ATELIER
ENTRELACS
HARRY SITER
JG SWITZER
JOCELYN MARSH
J LISTON DESIGN
KALLIOPI LYDAKI
KELLY FARLEY
KONEKT
LESLIE NIX
LINDA FAHEY
OCHRE
OCHRE WILD
PATRICK WEDER
PETER BOIGER
REFRACTORY
ROSE GOLD SOCIETY
SHARON BEALS
SKRAM

SAN FRANCISCO

LOS ANGELES

COUP D'ETAT

Established in 2004, Coup D'Etat has blossomed into a captivating, high-end design gallery that transcends the boundaries of traditional showrooms. With meticulous curation at its core, our gallery showcases an extraordinary collection that encompasses coveted vintage and antique pieces, esteemed designer lines, and exclusive works from talented artisans across the globe.

Our visionary creative team reimagines our gallery space every ten weeks, creating an awe-inspiring ambiance that is truly unparalleled. Each visit promises an enchanting “Coup Experience,” transporting you to a realm of unrivaled beauty and refined luxury.



Locate in:

[San Francisco](#)

[Los Angeles](#)

4-6	AFTER EDITIONS	34-36	DAMIAN JONES	64-66	JOCELYN MARSH	94-96	PETER BOIGER
7-9	AGRIPPA	37-39	DANIEL SHAPIRO	67-69	J LISTON DESIGN	97-99	REFRACTORY
10-12	BAROVIER&TOSO	40-42	DAX SAVAGE	70-72	KALLIOPI LYDAKI	100-102	ROSE GOLD SOCIETY
13-15	BASSAMFELLOWS	43-45	DE LA VEGA	73-75	KELLY FARLEY	103-105	SHARON BEALS
16-18	BRENT WARR	46-48	DOUGLAS FANNING	76-78	KONEKT	106-108	SKRAM
19-21	CHRISTOPHER BOOTS	49-51	EDWIN MALDONADO	79-81	LESLIE NIX		
22-24	CHUCK MOFFIT	52-54	ELAN ATELIER	82-84	LINDA FAHEY		
25-27	COUP STUDIO	55-57	ENTRELACS	85-87	OCHRE		
29-30	COUP STUDIO FABRICS	58-60	HARRY SITER	88-90	OCHRE WILD		
31-33	COUP XX	61-63	JG SWITZER	91-93	PATRICK WEDER		

AFTER EDITIONS



RACHIS TABLE

After Editions is a collective of creative talents, founded in 2023 by Dylan and Nicolette Farrell. We design objects that unite contemporary craftsmanship with courageous playfulness. Born of a love for collaging utility with ornament and constructivism with romance, our studio takes joy in tinkering with unexpected visual narratives that are grounded in classical sensibilities.

Each object offered by After Editions is thoughtfully crafted in close collaboration with some of the world's most talented artisans, combining age-old techniques with the most modern technologies available. Artistic risks are taken. Gimmicks are avoided. The goal is to offer heirloom pieces filled with undiluted personality.



ANTLER CONSOLE



SAIL CHANDELIER



WONDERLAND WALL SCULPTURE



LEVELLER BAR STOOLS



LADY LEVELLER CHAIR

AGRIPPA



LADY STING CHAIR

Agrippa is a Spanish company established in 2008 in Valencia. Agrippa's ethos is its connection to and belief in the purity and beauty of wood. Agrippa stands out for its quality craftsmanship process and its sophisticated designs. The result is an exquisite collection that marries timeless beauty with extraordinary quality.



LADY STING CHAIRS

Available in: San Francisco



SALMA CHAIR



DIDEROT DESK



ISADORA LOUNGE CHAIR & POUF

BAROVIER&TOSO



NEW FELCI CHANDELIER AT COUP D'ETAT LA

Few brands that exist today can claim to predate the Italian Renaissance, but Murano, Italy-based lighting company Barovier&Toso is one such brand. Founded in 1295 by the Barovier family, Barovier&Toso is credited as the world's sixth-oldest business still in operation.

For over 20 generations, these glassmakers have become masters in the art of Venetian glass. This company demonstrates remarkable expertise in crafting bespoke lighting solutions while consistently innovating with a wide range of new designs, encompassing both contemporary and traditional styles that are destined to become timeless classics.

Barovier&Toso has a reputation for illustrious lighting designs and a discriminating clientele; this company's timeless obsession with perfection and innovation has lasted more than 700 years.



BISSA BOBA CHANDELIER & VERONESE TABLE LAMP

Available in:

San Francisco

Los Angeles



TRIM



AGADIR



PALMETTE



ERCOLE

BASSAMFELLOWS



WOOD FRAME HIGH BACK LOUNGE CHAIR AND OTTOMAN,
LEATHER DESK, WEDGE CHAIR AND CIRCULAR STOOL

Architect Craig Bassam and creative director Scott Fellows are the founders of BassamFellows and the Craftsman Modern aesthetic. Their aesthetic ethos was formed from their collaborative vision for the brand, marrying architectural authority with a minimal-artisanal philosophy. From its inception, the company has focused on building relationships with some of the world's leading craftspeople, whilst forging innovative and intelligent collaborations across the worlds of architecture, branding, and design. A genuine, fully integrated lifestyle brand, BassamFellows, encompasses architectural projects and interiors as well as impeccably crafted furniture.



DAYBED & ASYMMETRIC COLLECTION



WOOD FRAME COUNTER & KANT TABLE



ASYMMETRIC COLLECTION



WOOD FRAME LOW BACK LOUNGE CHAIRS



SPOKE OCCASIONAL TABLE
& SLING CLUB CHAIRS

BRENT WARR



WOODFIN COLLECTION

Artist Brent Warr produces collectible furniture, lighting, and sculptural art by incorporating the mediums of plaster, epoxy, wood, and paint.

From his studio in Bainbridge, GA, Warr begins with abstract drawings, which he transforms into functional and sculptural forms. Working in a variety of mediums, he pushes the limits of material and craftsmanship; his pieces are described as bold, with visual depth but restraint.

He launched his inaugural Woodfin Collection at IFCC in 2021, and it quickly gained recognition in the high-end design community; his works have been featured in esteemed publications, including Elle Decor, Architectural Digest, and Interior Design Magazine. His current body of work includes one-of-a-kind pieces, limited edition pieces, as well as a collection that can be ordered as production pieces and is highly customizable.



COLLECTIBLE CHAISE SETTEE



LUCILLE FLOOR MIRROR



MARGARET SIDE TABLE



WENDON CONSOLE



RACHEL FLOOR LAMP

CHRISTOPHER BOOTS

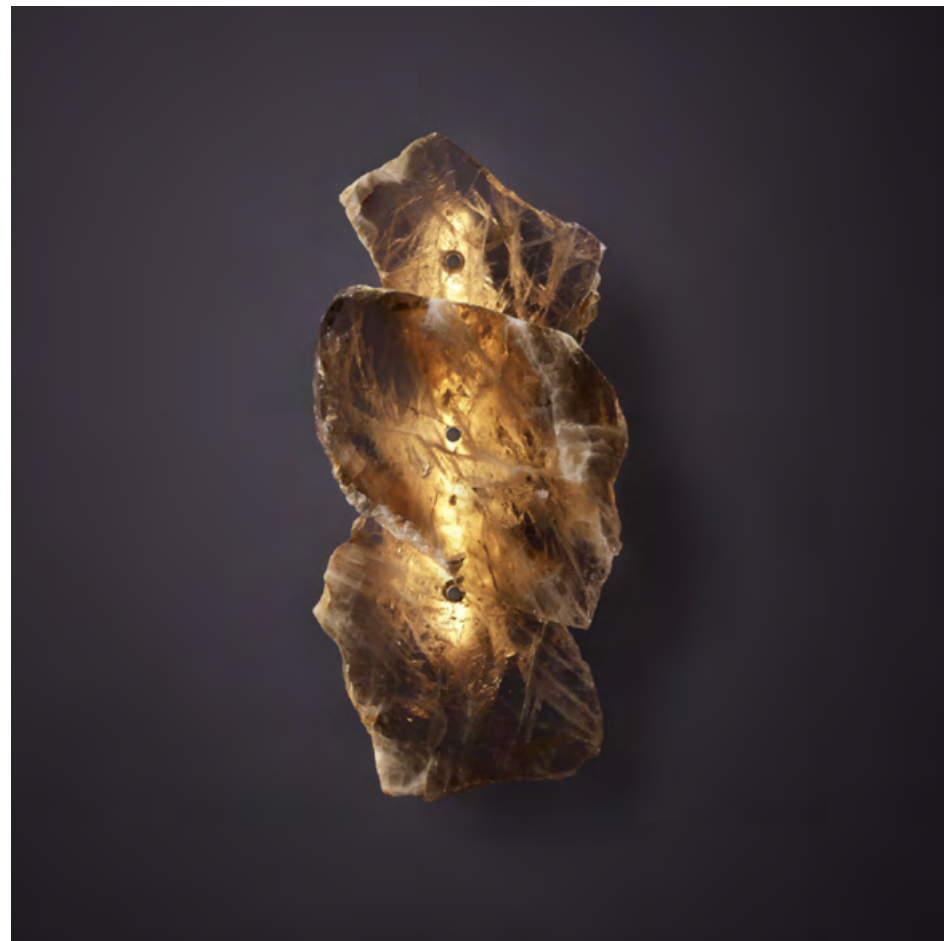


Christopher Boots is a Melbourne-based industrial designer driven by a love of nature and light. Christopher's handmade work includes lighting, furniture, and objects. He explores the architecture of the geometry of organic shapes and is often inspired by forms found in plants, animals, and minerals.



ABACUS

Available in: [San Francisco](#) [Los Angeles](#)



PETRA | TRIPLE



PROMETHEUS



METEOR

CHUCK MOFFIT



ARMOR SIDEBOARD

Southern California-based artist and furniture designer Chuck Moffit creates work that marries time-honored techniques with innovative mechanics. His collections balance brutalist processes while incorporating delicate details. Moffit creates his pieces out of glass, steel, bronze, and leather, but is not confined by these materials and is engaged in experimenting with unexpected elements. His work often blurs the lines between art and functional furniture.



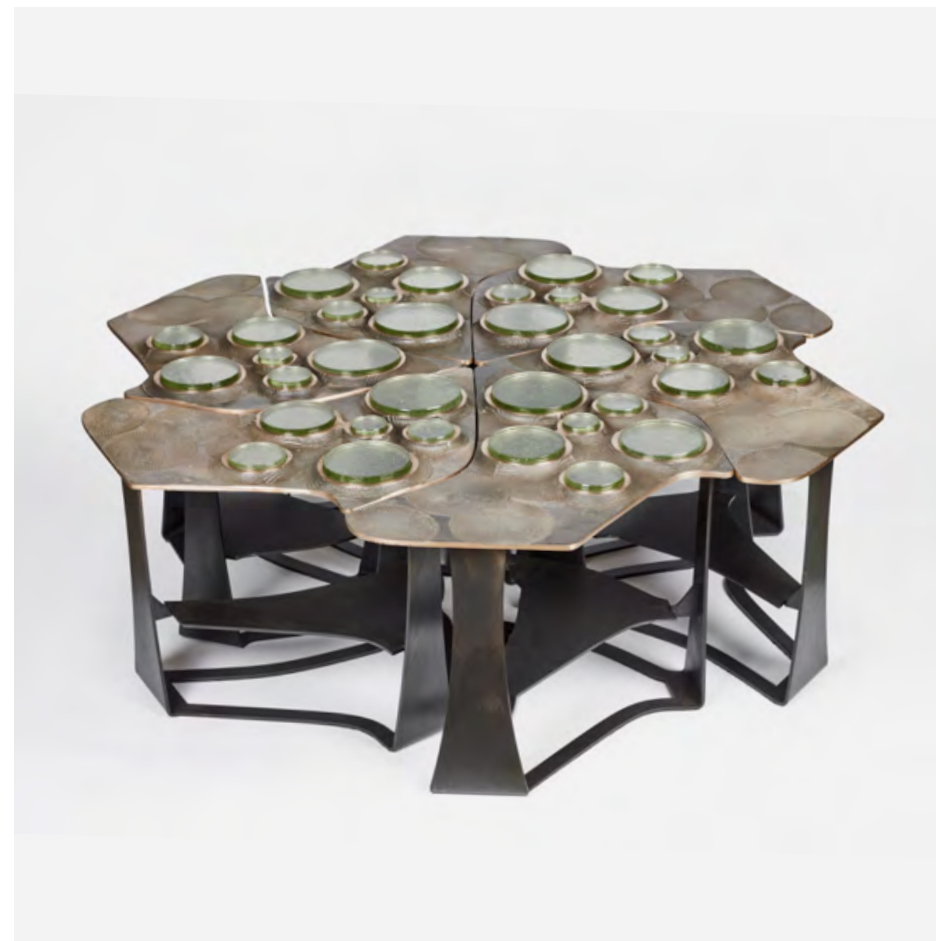
TOPO XX004



INSURGO TABLE LAMP



STRATUM DINING TABLE



TIBERINUS COFFEE TABLE

COUP STUDIO



CASINO ARMOIRE, CREDENZA & SOFFICE COMPONENT

The COUP STUDIO collection seeks timelessness, while remaining fresh and engaging. Designed by creative director Darin Geise and crafted by hand in California. The collection pays homage to Darin's passion for vintage and antique furniture while embodying an aesthetic that feels contemporary and functional.

The COUP STUDIO collection is bench-made and can be fully customized for a personal piece that compliments your project.



CUBO SECTIONAL



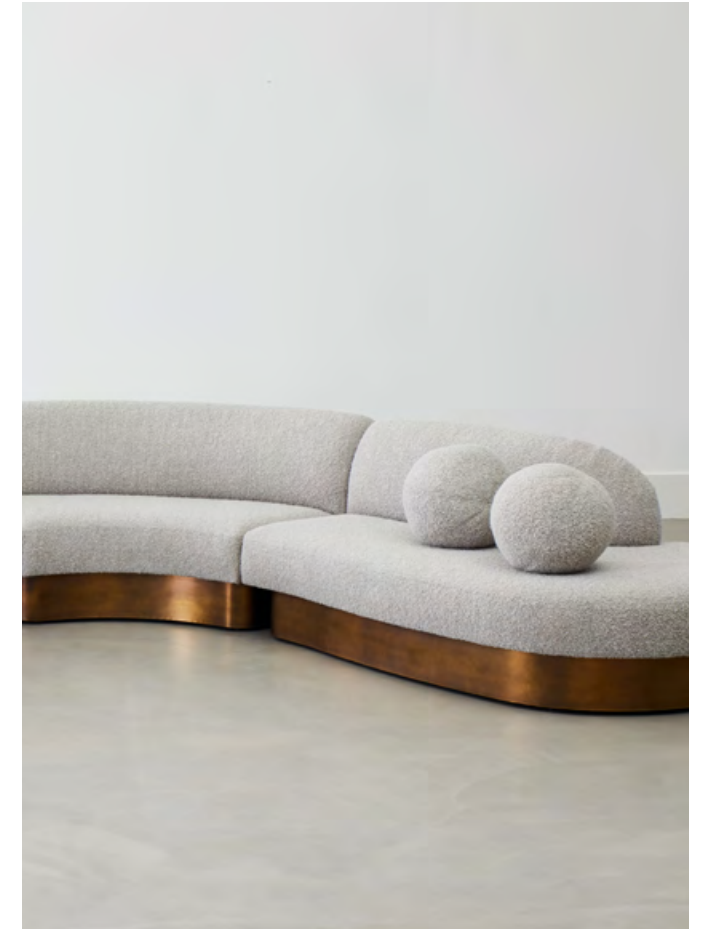
AQUITAINE CHANDELIER



TROUPE CHANDELIER



MUSHROOM STOOL & BELO TABLE



BIOMORPHIC SECTIONAL

COUP STUDIO FABRICS



Alongside Darin Geise's distinguished COUP STUDIO furniture and lighting collections, he has channeled his diverse talents into the curation of a textile collection. COUP STUDIO FABRICS reflect his powerful visual perspective, harmoniously intertwined with a meticulously selected color palette that mirrors the brand's lively and playful aesthetic.

We partner with expert weavers who share our passion for design and quality to produce exceptional textiles.

The collections boast a refined interplay of approachable shades and textures, thoughtfully designed to integrate into a wide range of applications. They not only complement our comprehensive furniture offerings but also elevate the aesthetic of any space.



COUP STUDIO NUAGE CHAIR IN SKYLINE - CAMEL



FIESOLE - CHOCOLATE



SKYLINE - CAMEL



COCO - PRUNE



SILVIA - MOSS



COUP XX, a curated collection of twentieth-century design and an assortment of contemporary pieces that nod to the past. All handpicked by COUP D'ETAT founder, Darin Geise.

COUP D'ETAT was established in 2004 by Geise. In a tiny storefront on 18th Street in San Francisco, he conceived an amalgam space, equal parts traditional and modern. Geise quickly developed a following in the San Francisco design community and became a resource for curated vintage and antique furniture.

During its 18 years of business, COUP D'ETAT has evolved into a contemporary design gallery. This change has not altered the desire to continue to showcase unique vintage pieces. The backbone of our visual displays is the layering of contemporary and vintage furnishings.

Darin's passion for travel and discovery fuels his commitment to sourcing high quality vintage that is available in both COUP D'ETAT locations.



LE BAMBOLE CHAIS AND LOUNGE CHAIRS BY MARIO BELLINI

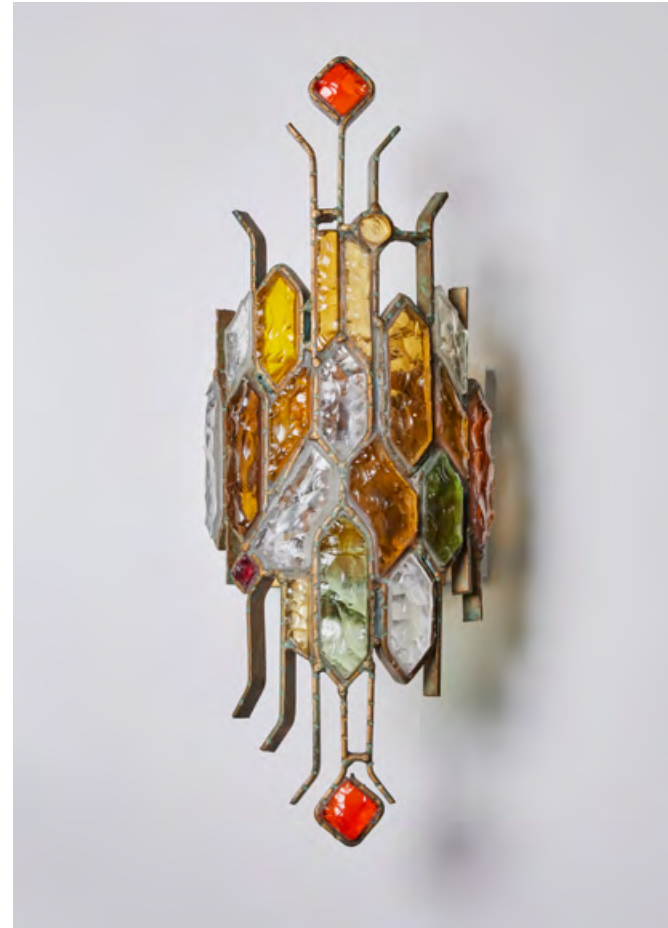
Available in:

San Francisco

Los Angeles



CLAM CHAIR
BY MADSEN & SCHUBELL



POLIARTE SCONCE #1 BY ALBANO POLI



TARATELLA FLOOR LAMP
BY ANTONIO PAVIA



CONFIDENTIAL CHAIR & TINO FLOOR LAMP

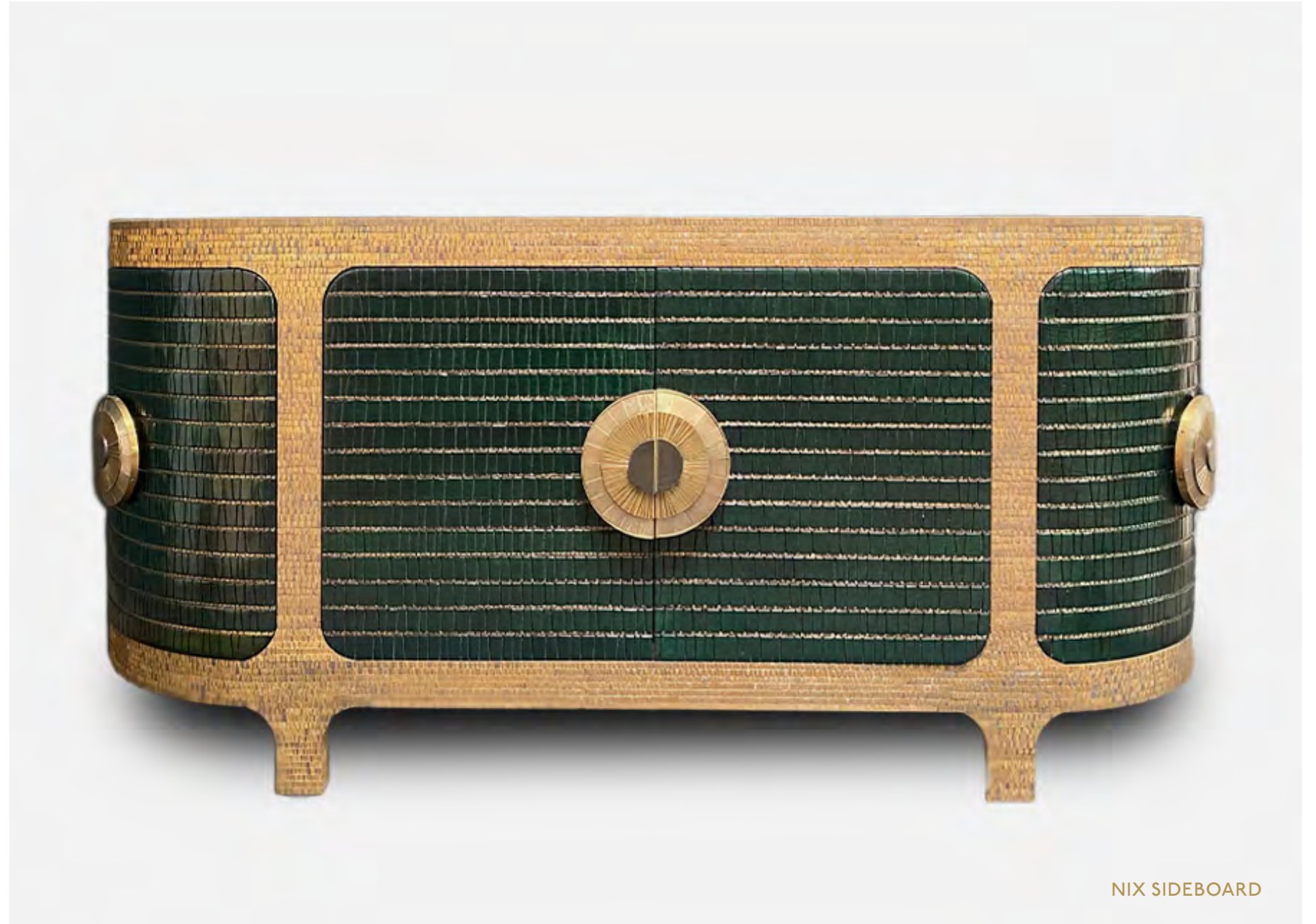
DAMIAN JONES



MEDALLION CREDENZA

Damian Jones is a Welsh furniture designer based in L.A. who creates commanding and multi dimensional pieces that are uniquely his own style.

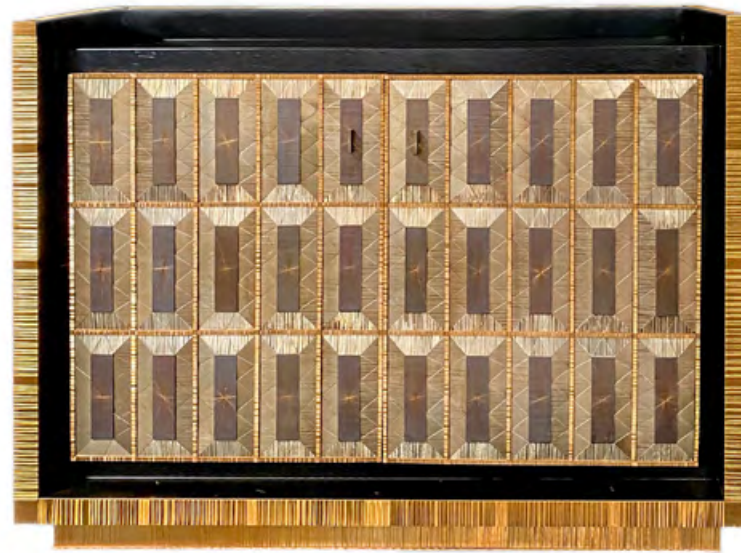
Jones creates his designs by combining exotic woods with hand-cut bronze tiles. Each tile is individually placed to create intricately faceted patterns.



NIX SIDEBOARD



AXLE CONSOLE



THESAUROS CHEST



UMBRA SIDE TABLE

DANIEL SHAPIRO



SPLAT LAMPS & CAGED SIDE TABLE

Daniel Shapiro is a ceramic artist based in St. Louis who specializes in creating works that are functional, sculptural, and rooted in imagination. Drawing upon his 15 years of experience as a graphic designer, Shapiro's approach to each piece is informed by a fusion of the digital world with the organic medium of clay. This synthesis imbues his works with a sense of playfulness and surprising energy, marrying the contemporary with the timeless.

Daniel's artistic journey has taken him through various corners of the United States, starting from a small Missouri town where he spent his formative years to Miami, New York, and Los Angeles, where he honed his skills as a designer. Each of these locations has contributed to shaping his unique design language, leaving a distinct imprint on his creations.





DOUG



SPLAT LAMP



LARGE GLOBE TOP SPRING LAMP



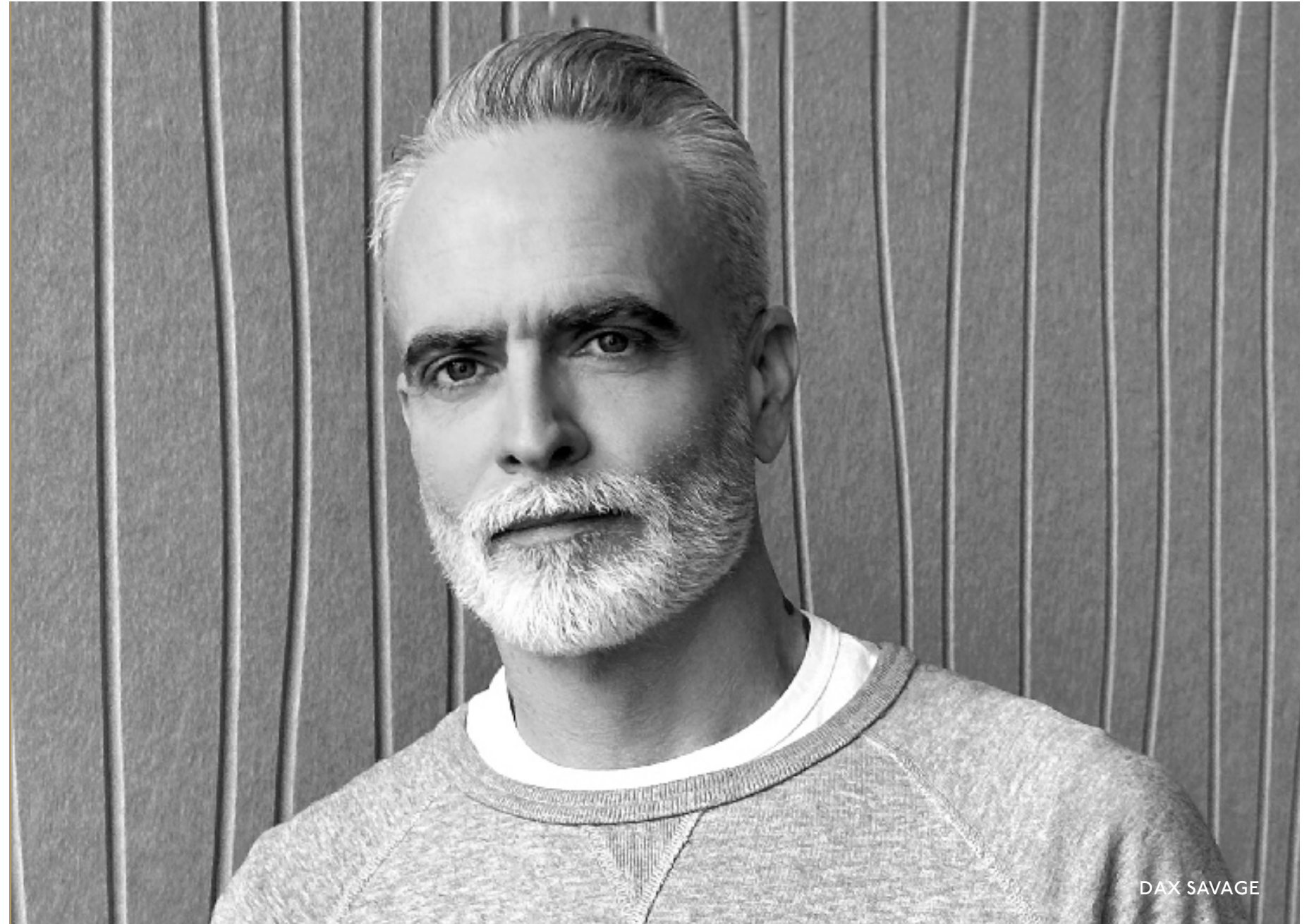
RING STACK FLOOR LAMP



Dax Savage is an artist and craftsman based in Los Angeles, known for creating handmade sculptural baskets and light fixtures. His unique pieces are made from a blend of natural materials such as antlers, wood, rope, stones, and leather. Dax combines ancient weaving techniques with modern technical skills to give a fresh twist to functional art objects.

Growing up in the rural landscapes and mountains of Idaho, Dax draws inspiration from animals and nature, which has significantly influenced his artistic journey. His creations resonate with both art enthusiasts and nature lovers due to their captivating and soulful essence.

Dax's sculptural baskets comprise custom pieces for residences, commercial spaces, and private collections.



DAX SAVAGE

Available in:

San Francisco

Los Angeles



HANGING SHED MOOSE ANTLER BASKET



CALIFORNIA COAST DRIFTWOOD BASKET



SHED ELK ANTLER BASKET

DE LA VEGA



CAMPANHA BED

Mark de la Vega is the founder and principal designer of DE LA VEGA, based in Red Hook, Brooklyn.

DE LA VEGA takes cues from a variety of global and historical references. Mark uses the highest-quality materials to reinvent forgotten techniques. He offers rugged designs that are expertly refined with a contemporary approach to century old techniques.



L'ELEPHANTE CHAIRS

Available in: San Francisco Los Angeles



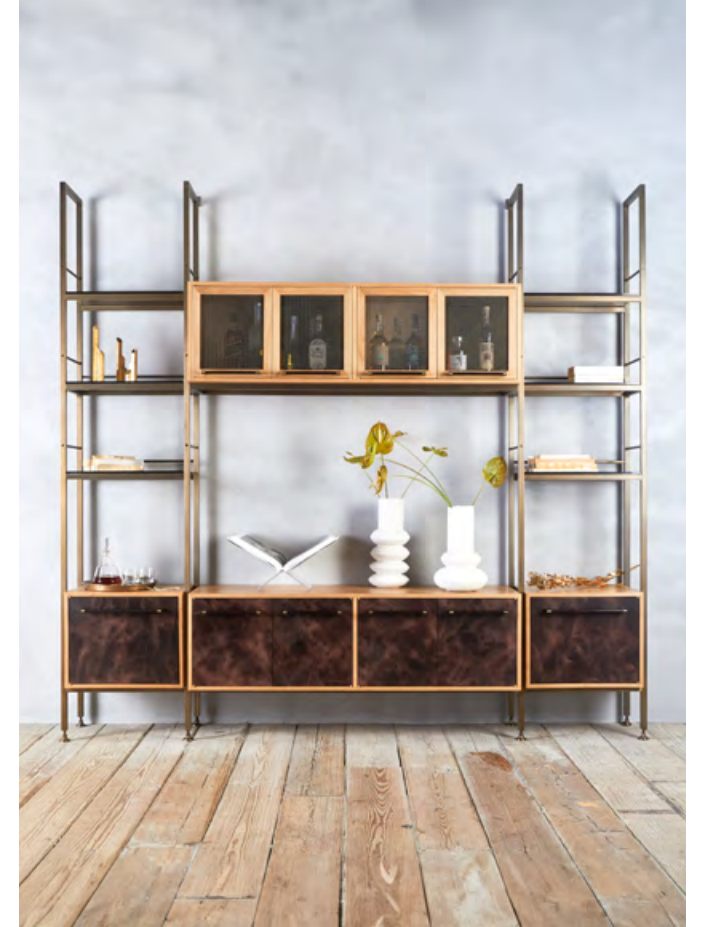
GIAC SIDE CHAIR



ABUELO BUREAU



GIAC BED



CAMPANHA STORAGE

DOUGLAS FANNING



RUBBLE OUTCROP V

Douglas Fanning is a New York-based artist who creates each piece by hand from his Red Hook, Brooklyn studio.

He is a passionate architect, designer, and creator whose unique work is aptly described as “tough-beauty”. His talent is a marriage of architecture, design, and physics in the form of clean, fluid, daring pieces of art.



DOUGLAS FANNING & 3 - TIER MOBILE

Available in:

San Francisco

Los Angeles



THE TILL



NESTED GROUPING



ARCHIPELAGO TABLE

EDWIN MALDONADO



EDWIN MALDONADO

Los Angeles-based leather artisan Edwin Maldonado is a master of the lost art of traditional French leather upholstery. Edwin sculpts leather over wood and metal frames using a technique of wetting and steaming hides. His skill at manipulating and hand-finishing leather has been perfected over decades of working for luxury furniture brands. With the inception of his own collection, Edwin is free to create the furniture forms he is passionate about – designs with exaggerated curves and intricate details.



ABLE SOFA

Available in:

San Francisco

Los Angeles



ADAM CHAIR



SETH CHAIR

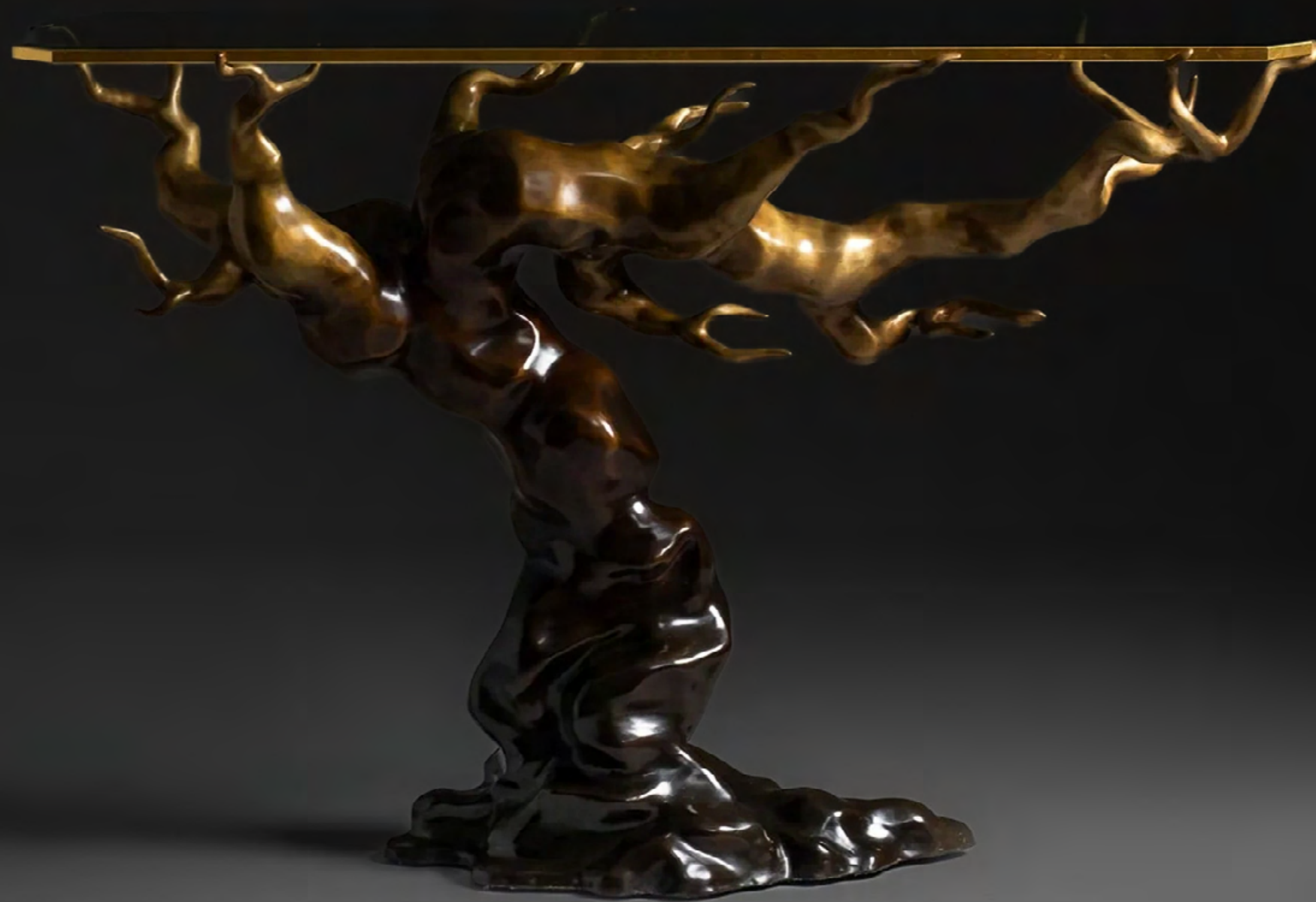


CAIN CHAIR



EVE CHAIR

ELAN ATELIER



FOREST CONSOLE

At Elan Atelier, sublime products are handcrafted with artistry employing old work techniques. Founded in 2014 by Alison Legge and Christopher Noto, Elan Atelier is driven by a deep appreciation of traditional methods, noble materials and modern innovation.

Their goal is to produce unique, inspiring and timeless furniture, lighting and accessories.



Available in:

San Francisco

Los Angeles



ARCH CONSOLE

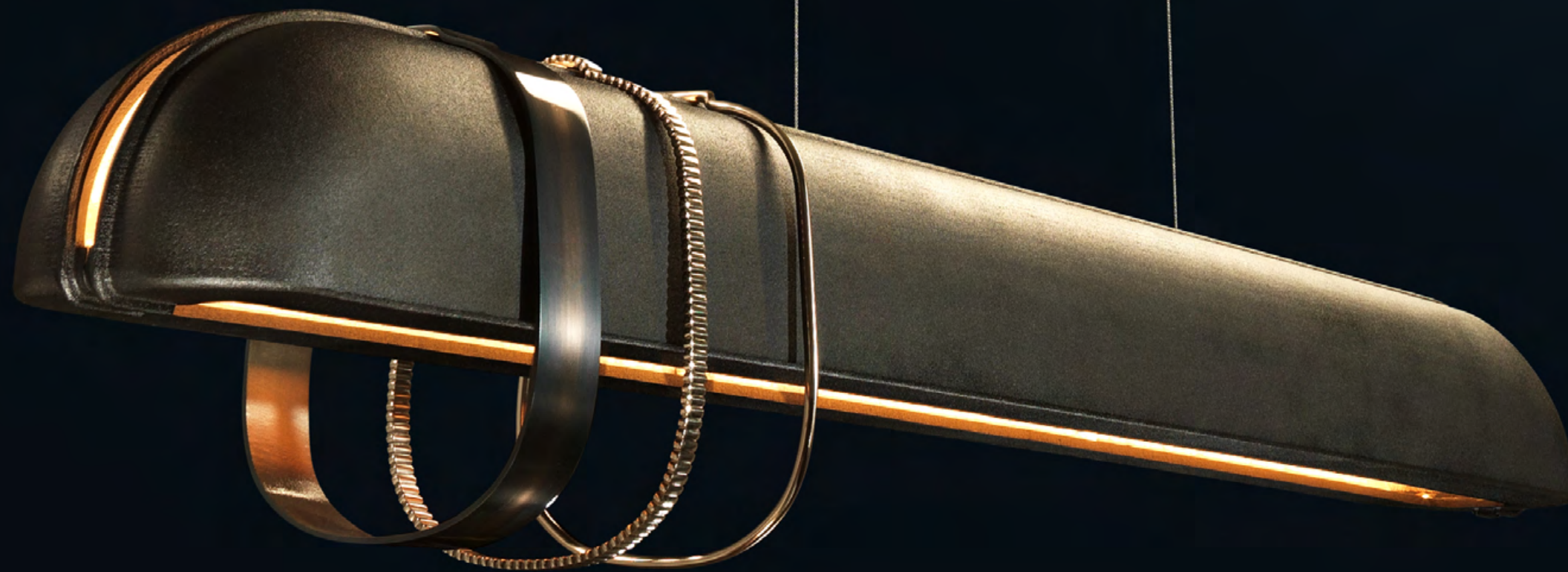


MANHATTAN CENTER TABLE



ALTAI SIDE TABLE

ENTRELACS



ASH PENDANT

All Entrelacs lighting is hand crafted at the family owned Fonderie D'Art Macheret in Le Mans, France. The work relies on a passion for bronze and the creative arts. The lighting collections are a perfect balance of bronze and alabaster. The trained approach creates refined fixtures with a naturally pure and timeless result.



MOON WALL SCONCE

Available in:

San Francisco

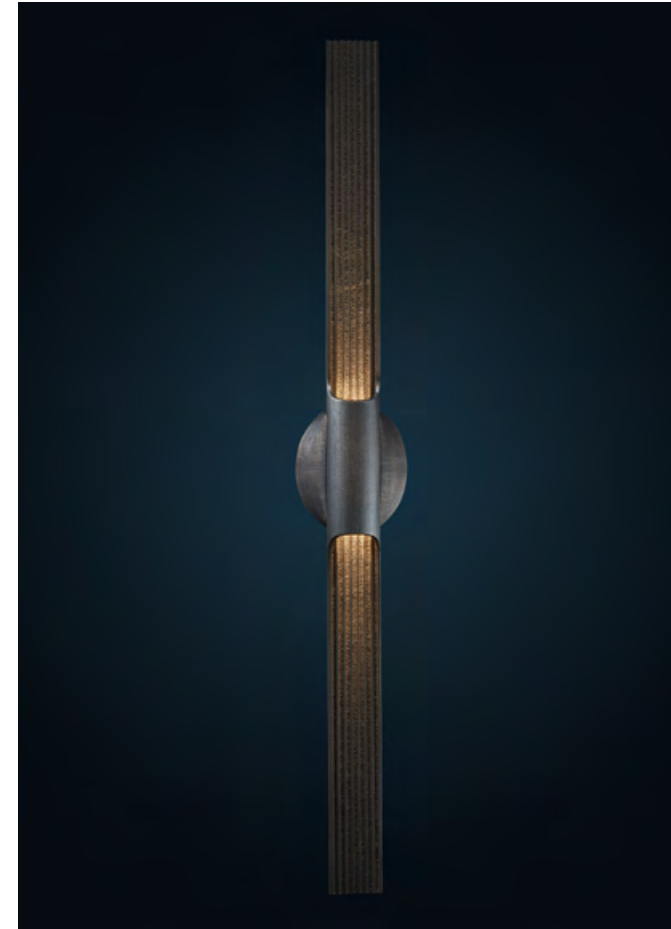
Los Angeles



TOAST SCONCE



HUBLOT MIRROR



BEAM SCONCE



NARCISSE TABLE LAMP

STUDIO HARRY SITER



MOTHER NATURE

Harry Siter creates furniture and figures that are both playful and powerful.

Since the early 1990's, Harry Siter has been immersed in his artistic development by using trees to make furniture and art. He shapes the trunks with chain saws and then uses simple, classic approaches to surface and finish. He has become a master at stabilizing thick slabs of wood, and has discovered ways to manipulate and combine them with metal to make new designs and forms.





MOTHER NATURE



DEAR HUNTER



NAIL BRUSH CONSOLE TABLE

JG SWITZER



JESSICA SWITZER

JG Switzer is a textile and soft goods artisan studio focused on designing fabrics made of natural fibers that are hand tailored with custom patterns. Their painterly and modern felted wool is sourced from a local fibershed and made in their workshop in northern California. JG Switzer is devoted to sourcing the finest: wool, silk, linen, cashmere, cotton, and hemp. The studio is dedicated to quality at the highest level, ensuring they can deliver fabrics that are artfully abstract, sustainable, and distinctive.



FABRIC COLORWAYS AT COUP D'ETAT

Available in:

San Francisco

Los Angeles



PAINTERLY BLACK & RED



BOTANICAL



GENESIS



TAHOE

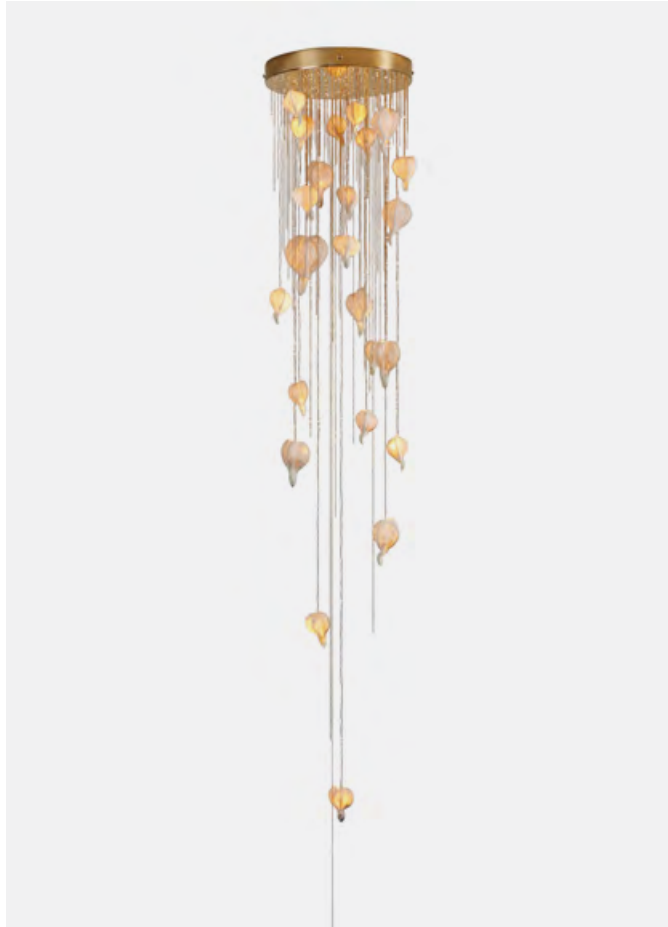
JOCELYN MARSH



BLUE WHALE - GOLD

Jocelyn Marsh is a Los Angeles based artist whose primary mediums include sculpture and lighting design. Central to her work is the theme that existence springs from the unknown space between death and life, the void that causes mixed emotions throughout humanity. Focusing on the thrilling fact that from nothing comes everything, Marsh celebrates this unknown space, imparting upon her work a sense of reverence toward nature.

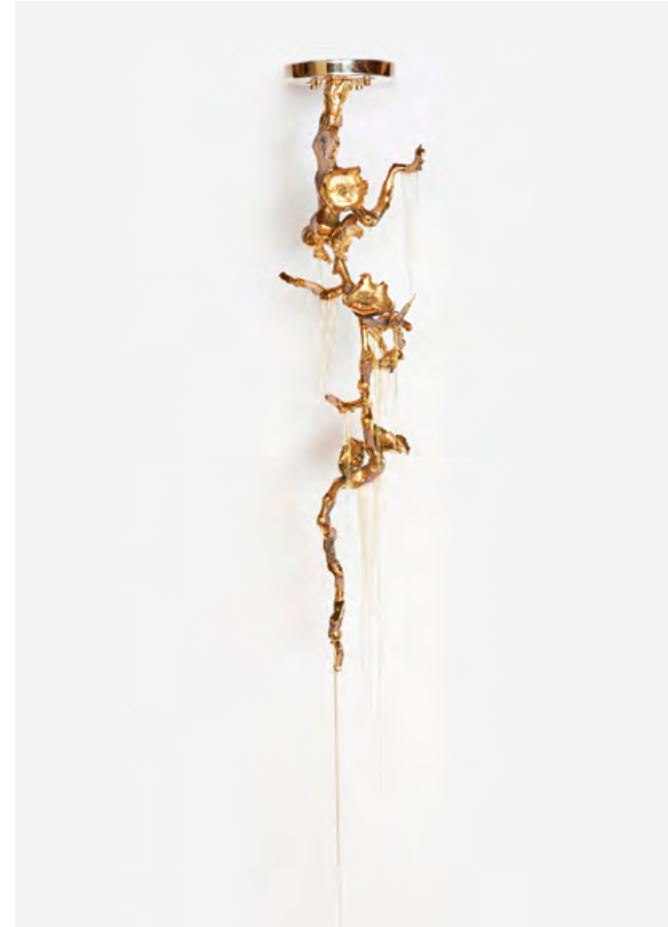




SEA POISON



CONSTELLATION FLOWERS IN COPPER

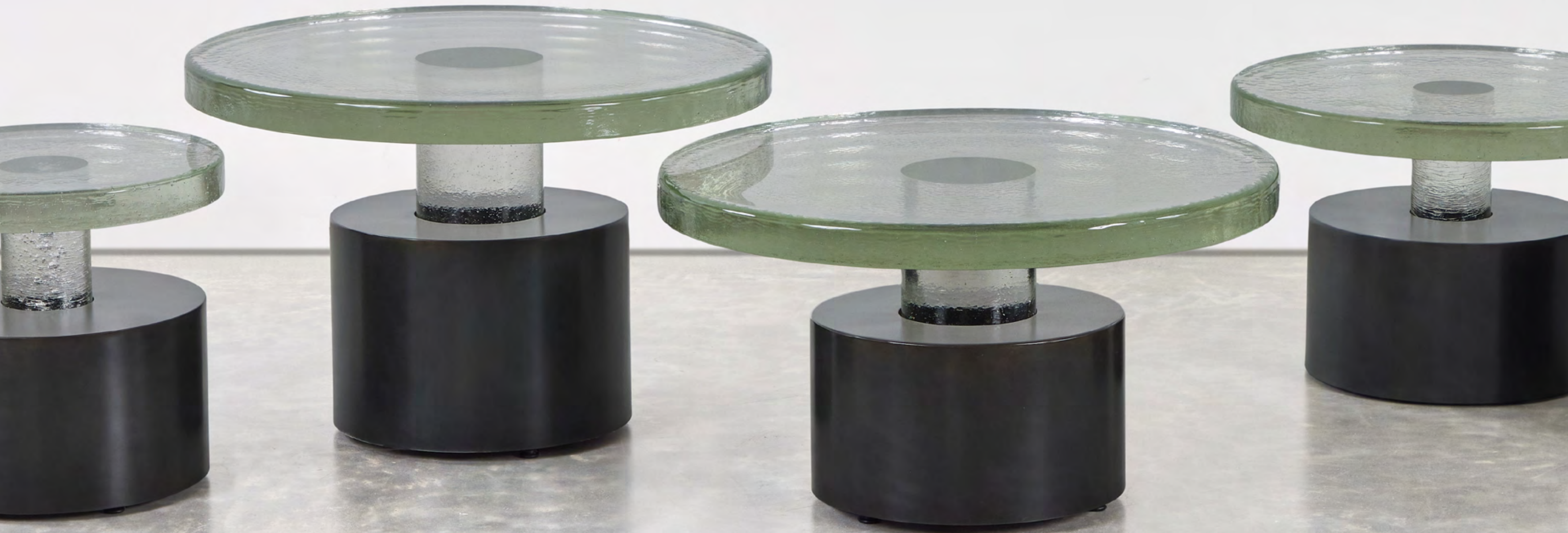


SHOUMEI LIGHT SCULPTURE



PRIMORDIAL EGGS

J LISTON DESIGN



BISHOP TABLES

J LISTON DESIGN is a design and fabrication studio committed to creating high quality furniture and art. John honed his skills over 15 years in custom glass and metal foundries before opening his studio in San Francisco in 2012. Combining experience from jewelry, metalsmithing, foundry, and glass casting, John's designs take influence from architecture, industrial formations and natural objects. Bringing function to the forefront, each piece is designed without excess, executing clean and clear forms handcrafted by John in San Francisco.



DENARII COCKTAIL TABLE



CHARRED WOOD CABINET



ARCHITECT SIDE TABLE/STOOL



BATTEN PENDANT



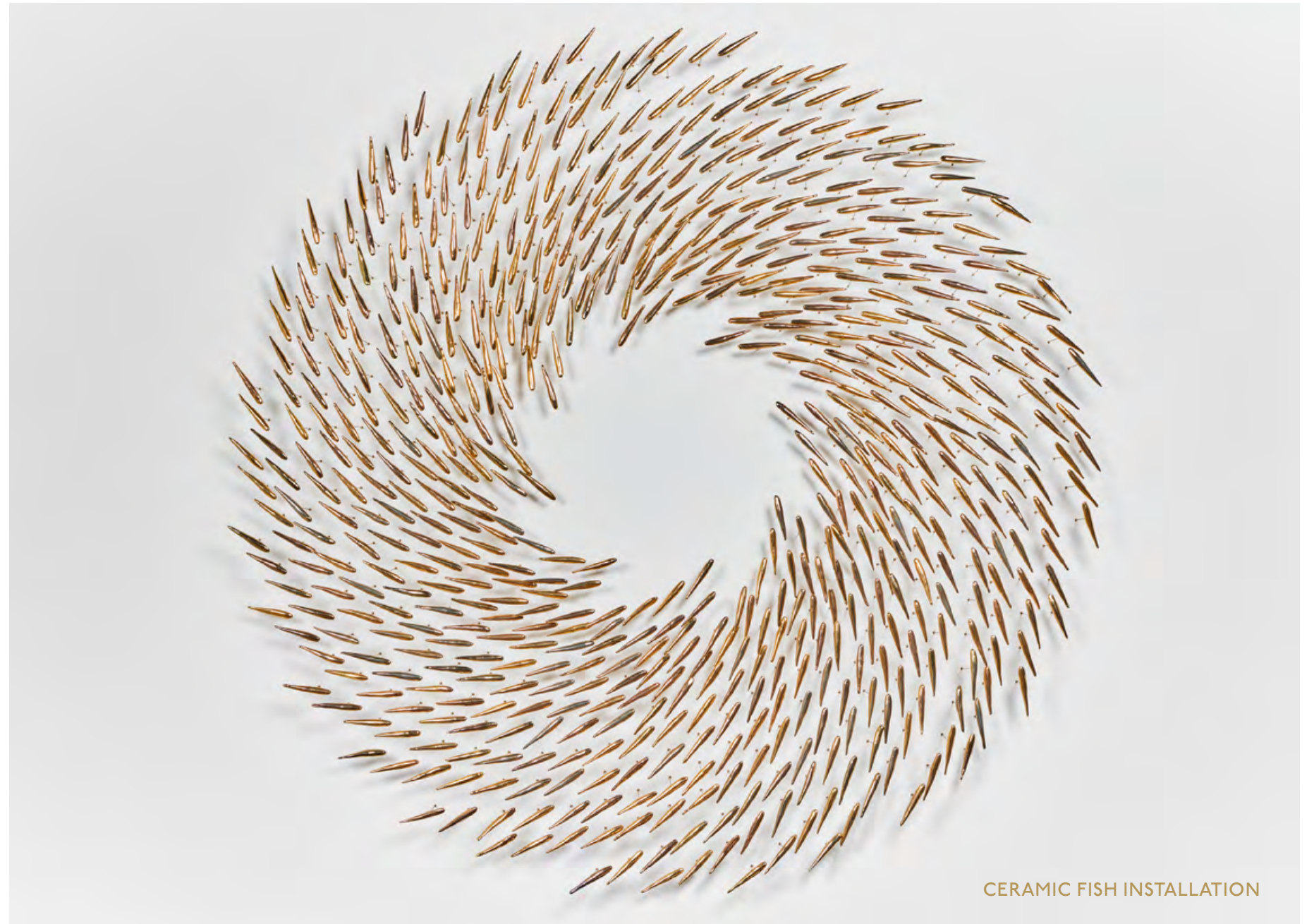
RIBBON CHAIR

KALLIOPI LYDAKI



CERAMIC FISH INSTALLATION

Kalliopi Lydaki was born in 1963 in Athens, Greece. She began studying art as a young adult, focusing on pictorial arts and sculpture in the atelier of the Greek painter Jiorgos Vogiatzis in Athens. During a trip to Crete, she met the ceramicist, Alda Reis. Inspired by the work in Alda's studio, she began training in ceramics, eventually opening an atelier in Chania, Crete, creating sculptures in porcelain and stoneware at high temperatures. In 2012, she moved her atelier permanently to Florence and started working on a "light art" collection, dedicating herself to making creations in porcelain and clay with glazes made from precious metals. These small ceramic sculptures have inspired her to create large wall installations of different sizes and orientations, enhancing their three-dimensionality by playing with color and light.



CERAMIC FISH INSTALLATION



THE RABBIT



THE GUINI FOWL



THE POODLE

KELLY FARLEY



ICE SCULPTURE AT COUP D'ETAT LA

Kelly Farley is a renowned ceramist and the founder of Pope Valley Ceramics. Kelly creates large-scale suspended sculptures; each artwork is one of a kind and entirely hand-made in his Pope Valley, Napa studio. The ceramic spheres go through an elaborate firing process using a Japanese style kiln called an Anagama. This process enables ash and other elements to serendipitously affect the variety of surfaces and patina of the spheres. Once the firing process is completed, the spheres are assembled according to Farley's vision of how they will interact in the installation environment.



CENTAURI DREAMS

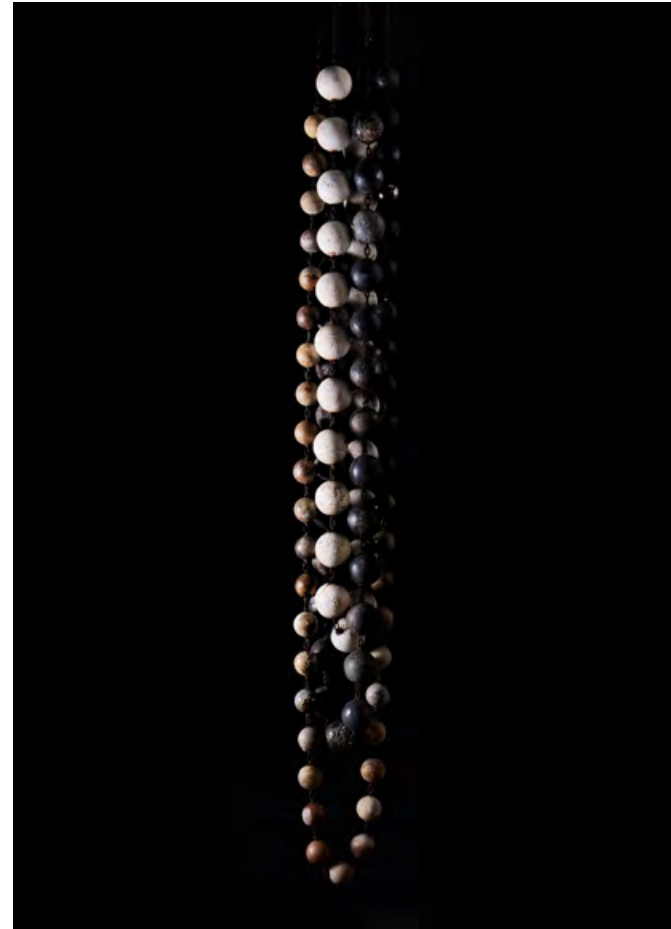
Available in:

San Francisco

Los Angeles



ICE



BLACK CLUSTER



SILICON CARBIDE



PART 2

KONEKT



KONEKT TEAM

Konket furniture and lighting are meticulously crafted by artisans with a carefully applied attention to detail. Handmade in Pennsylvania from natural materials that age and patina gracefully, each piece is informed by high-quality craftsmanship and distinguished by an embedded human touch. Unexpected materials like horsehair and chainmail are combined with traditional ones, highlighting the juxtaposition of contrasting textures and finishes.



THING 4 OTTOMAN, ARMOR CONSOLE & RIVER STOOL

Available in:

San Francisco

Los Angeles



THING 3 STOOL



ARMOR PENDANT

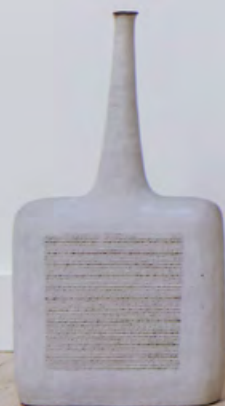


DIONIS DRINKS TABLE



A.CEPA MIRROR

LESLIE NIX



EHLANZENI(SOLD*) & TEMBA

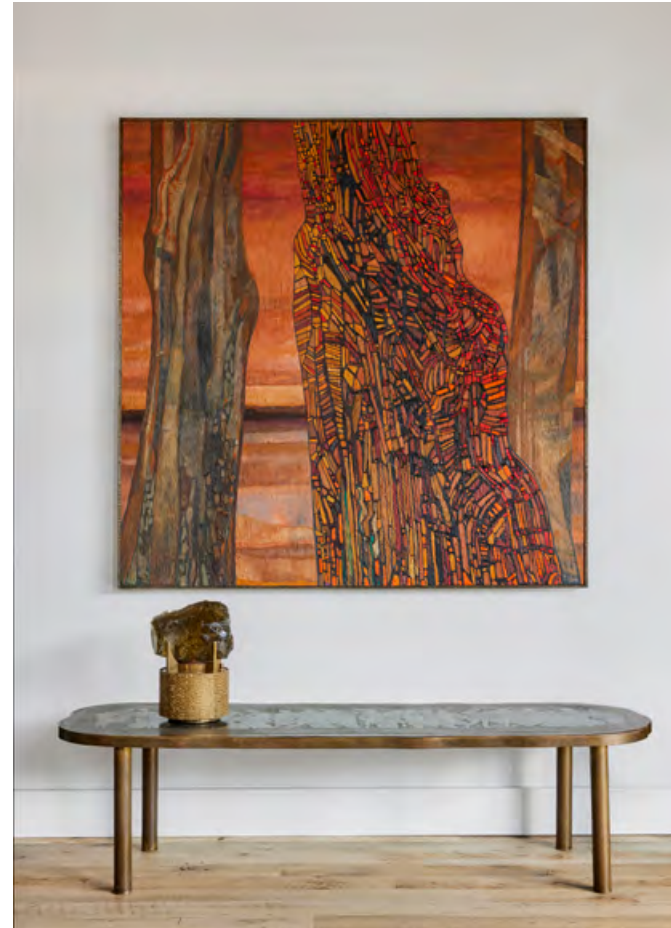
Los Angeles-based artist Leslie Nix is known for her singular personal style. With an interest in transformative materials, her process relies on experimentation, working in the mediums of oil on canvas, bronze, and glass. Her paintings, sculptural lamps, and decorative objects are influenced by her travels, including experiences in Africa. Nix received her BFA from the Savannah College of Art and Design.



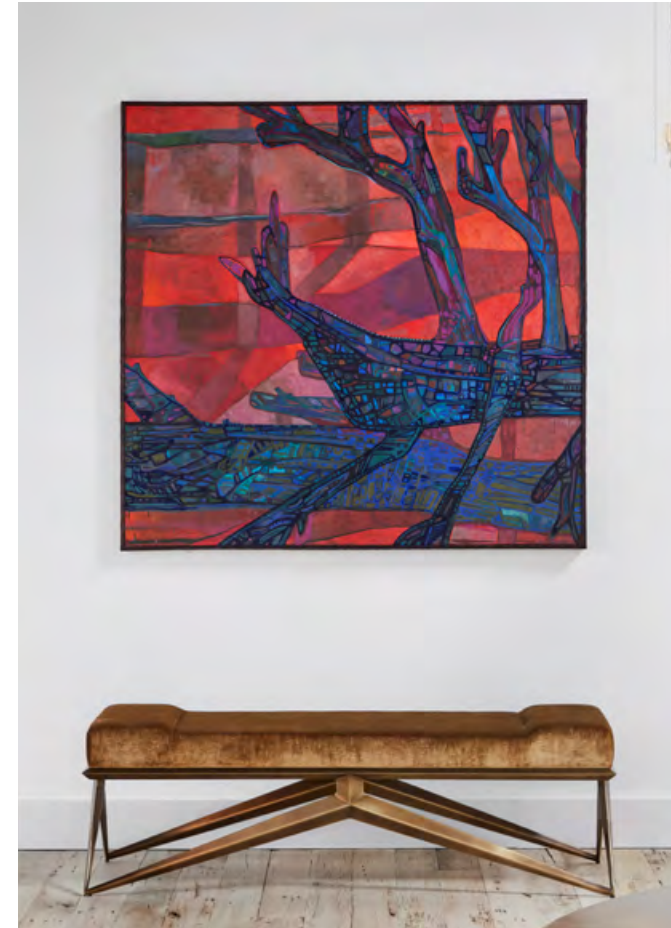
LESLIE NIX



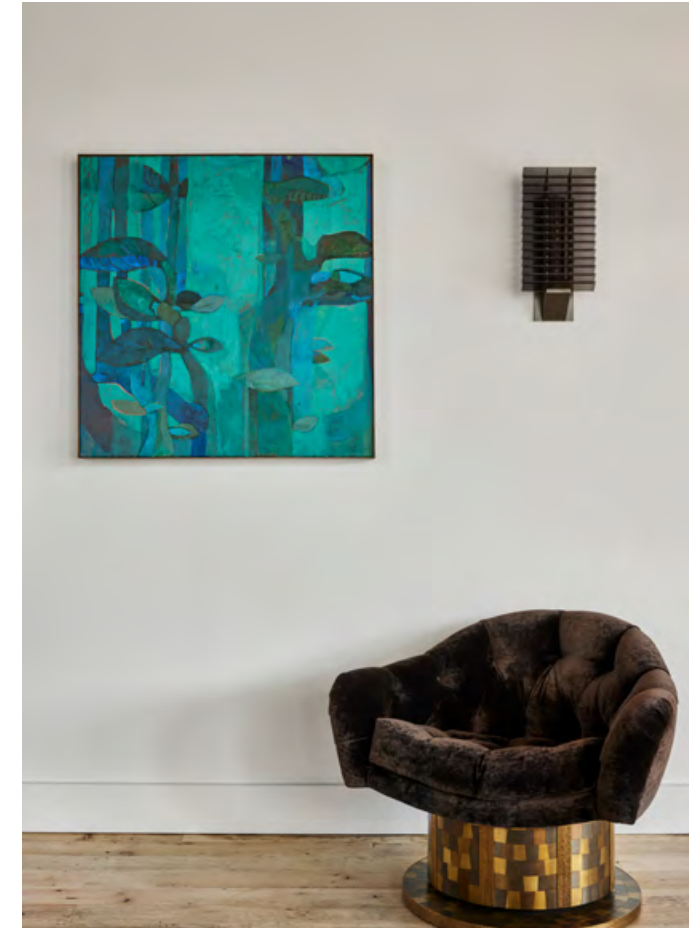
MUMAR



TEMBA



HAZYVIEW



CERULEAN MOODS

LINDA FAHEY



ASSORTMENT OF VESSELS

Linda Fahey is a ceramic artist and proprietor of Yonder Studio in San Francisco.

Linda creates sculptural and functional ceramics, specializing in hand-built forms with illustrative surfaces. With a background in illustration, Linda takes her drawings to the surface of her vessels and ceramic tiles. Linda's talent is sought after for large-scale site-specific projects, including custom tile design. She incorporates design influences directly from a life lived on the northern California coast and from her deep respect of the natural world.





URCHIN BOULE



SERPENTS



CUSTOM TILE PANEL



CUSTOM TILE PANEL

OCHRE



MOONLIGHT MURMURATION

OCHRE creates objects of style and beauty which are both timeless and contemporary.

The collection consists of furniture, lighting and accessories with emphasis on the use of high quality craftsmanship. The simplicity and honesty of form, together with the luxurious materials, result in an understated elegance which has become the signature of OCHRE.





MEDUSA BLOOM



SABLE STOOLS



SEED CLOUD & CARIBOU CHAIR



GAIA PENDANT

OCHRE WILD

AMSDEN, DE
Hospital
ber 1804,
86.

COLLECTION

AMSDEN

The OCHRE WILD collection showcases a captivating array of rugs, crafted in Bengal using ancient techniques and natural dyes. Every OCHRE WILD rug is meticulously handcrafted, from the initial yarn-making and dyeing process to the intricate weaving and finishing touches. Both the Indo-Tibetan and flat-weave Dhurrie rugs are made with a diverse selection of fibers and natural dyes, resulting in a harmonious display of colors and textures. Each rug is a one-of-a-kind creation, embodying sustainable practices and a profound connection to our shared Earth.



KALINDI SUBAH



QUORA



KERALA PINK



AQUA CHIMES



MUGHAL YELLOW

PATRICK WEDER



KAVRN COCKTAIL TABLE

Swiss-born (New York City-based) designer Patrick Weder creates furniture pieces that balance natural and artisanal processes in an elegant and unassuming way. His choice of wood is a vital part of each design. He selects the wood very carefully, using mainly maple or walnut, considering the wood grain and texture and how they relate to his concept for the final object. Each piece is one-of-a-kind and created by Patrick in his Brooklyn studio. With his great passion for nature and the environment, Weder maintains a focus on sustainability and selective designs built to endure through the ages.



HONEYCOMB LIGHT SCULPTURE



KAVRN STOOL



OUTSIDE IN CREDENZA



OUTSIDE IN SIDE TABLES

PETER BOIGER



PHOENIX II

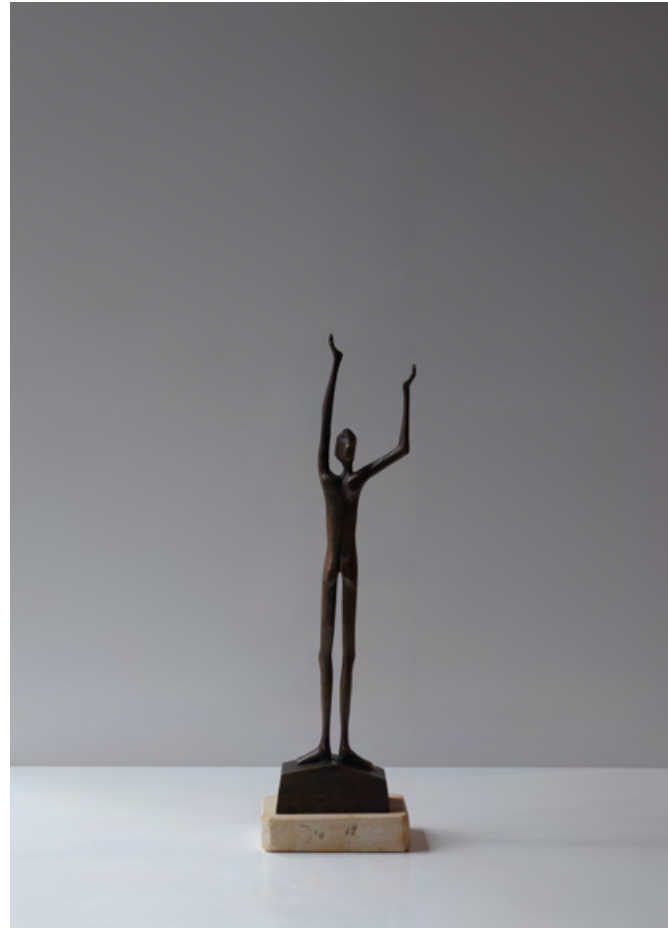
Peter Boiger is an internationally renowned sculptor, best known for his Holocaust Memorial in Jerusalem. Born in Altotting, Germany, Boiger currently resides and works in Northern California. Boiger learned woodworking at his grandfather's carpentry shop. When he was about 15, he became aware of the works of Henry Moore and other 20th-century sculptors. Peter's influences include African, Japanese, and pre-Columbian cultures. He works in several mediums: bronze, stone, and wood. Coup d'Etat has been honored to represent select works from the Peter Boiger Collection since 2012.



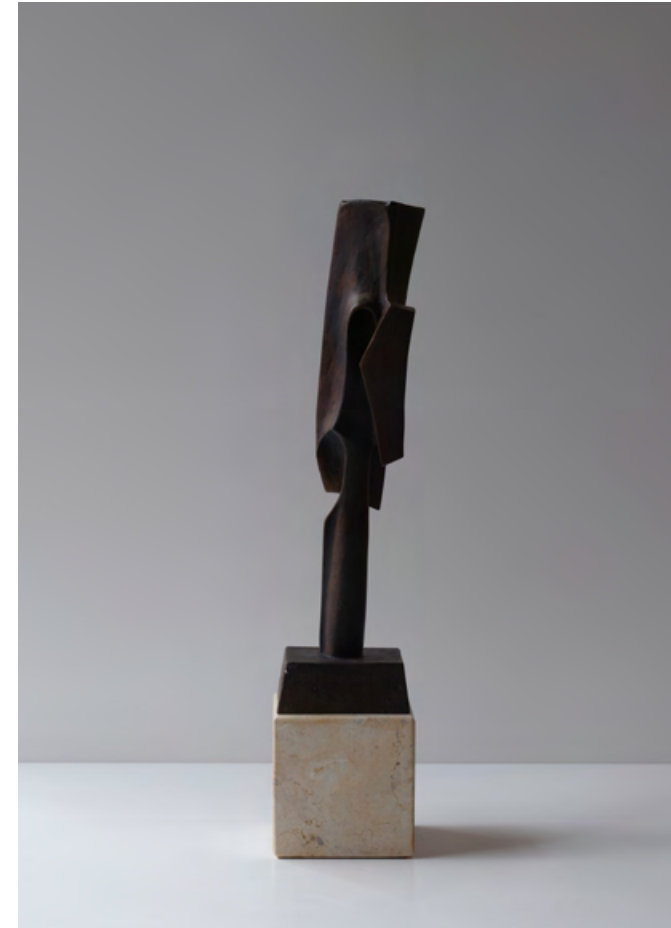
WIND PLOW III



TRANSCENDING I



INVOCATION II



BLACK SENTRY



AUGUR I

REFRACTORY



COLLECTION SHOWN IN COUP D'ETAT SF

Founded in 2012 by Angie West from Texas and Alberto Vélez from Bogotá, Refractory is a furniture, lighting, and object design studio based in Chicago. The studio conceives and produces rigorously crafted works in a language that is distinct within American and contemporary design landscapes. Layering traditional methods with modern tools, Refractory is both an evolution and an extension of a community of artisans who seek to create in the space where art meets collectible design.



PROMONTORY COCKTAIL TABLE

Available in:

San Francisco

Los Angeles



SLOOP CANDLE HOLDERS



CYPHER HANGING LIGHTS



OKENITE SCONCE NO.2



PROMONTORY STANDING LAMP

ROSE GOLD SOCIETY



EQUINOX NO.1

Magnus Schevene, the founder and creative director of Rose Gold Society, has long been passionate about illumination in all its forms. His work straddles the line between sculpture and design, taking inspiration from dance and contemporary design trends. Combining handcrafted materials like cast glass with the strong industrial beauty of machine-milled metal components, his lighting designs create radiant warmth while underscoring a passion for engaging spatial forms.

The Equinox design lends itself to infinite custom applications. Each fixture is hand-forged and assembled by expert craftsmen in California. Schevene designed each component, including the LED light diffusers; they are formulated and poured by hand, using craft techniques that yield qualities unattainable by manufactured processes.



MAGNUS SCHEVENE



EQUINOX NO.1



EQUINOX NO.2



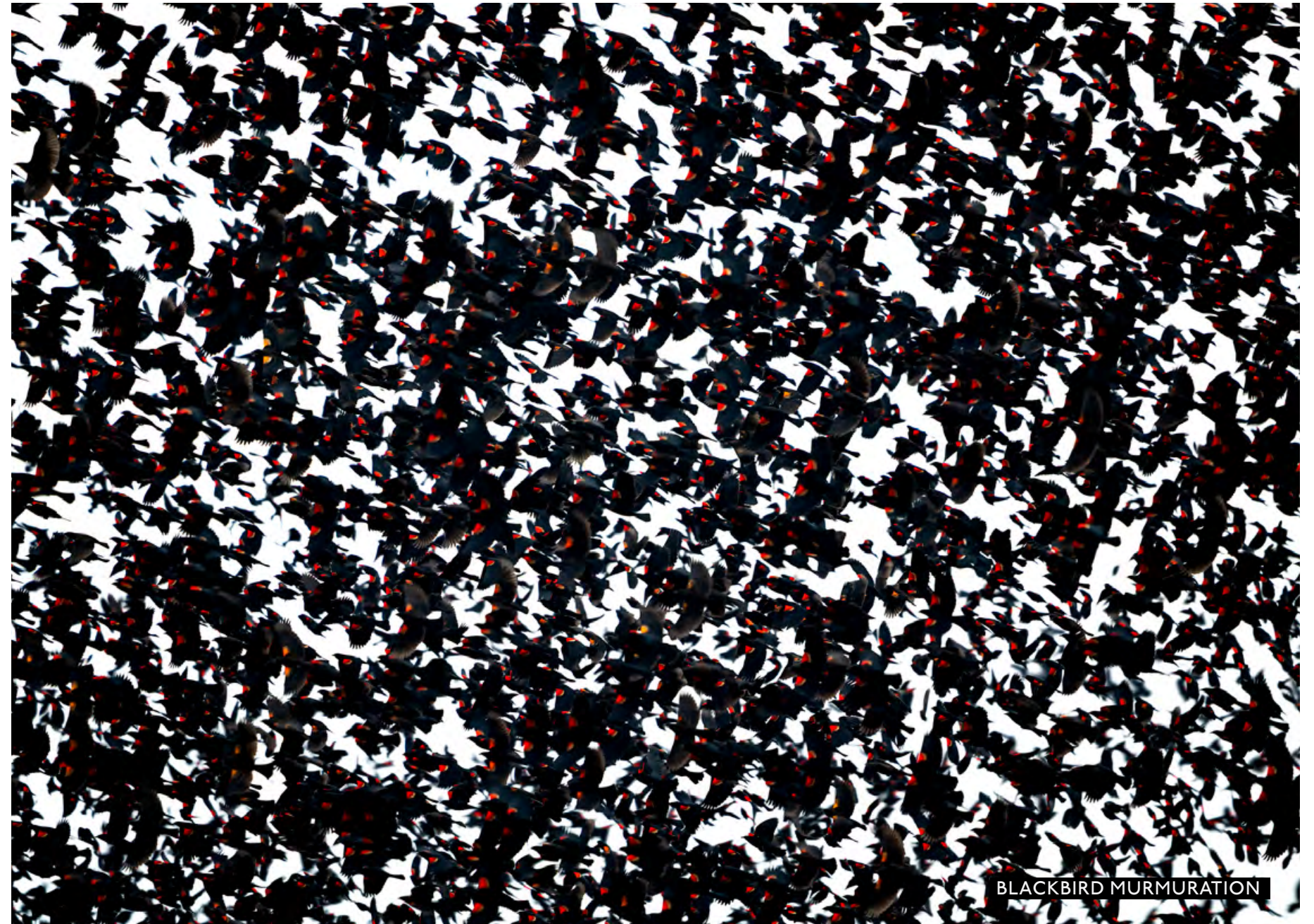
EQUINOX NO.3

SHARON BEALS



MEADOW BUNTING

San Francisco-based photographer Sharon Beals has been photographing nineteenth and twentieth century bird nests preserved in museum and science collections since 2007. She is the author and photographer of *Nests: Fifty Nests and the Birds That Built Them*. Beals is compelled to photograph nests for their form and the spectacular color of bird eggs. Her images provide insight into the beauty and mystery of nature's extraordinary architects. In addition to nests, Beals photographs wild native habitats and watersheds, and most recently, serpentine coastal fault lines. She uses her images to create awareness of native habitats as well as river and ocean conservation.





SPOTTED NIGHTINGALE THRUSH NEST



BARN SWALLOW NEST (HIRUNDO RUSTICA)



TREE SWALLOW NEST

SKRAM



SADDLESTOOLS

Skram Furniture Company, founded in 2001, is based in the Piedmont region of North Carolina. The company has earned a domestic and international following for its distinctive approach to modern design—one that emphasizes sustainable practices, authentic materials, and extraordinary workmanship.

Skram craftsmen utilize a mix of traditional techniques and cutting-edge fabrication processes to create products that meet the highest standards of precision and durability. With expertise in a wide range of materials—including timber, hardwood veneer, assorted metals, leather, and stone—the company's products are uniquely suited to diverse settings. Skram's furnishings are specified in a broad range of environments from residential to commercial and hospitality.



FOUNDER, DESIGNER — A. JACOB MARKS

Available in:

San Francisco

Los Angeles



WYANDOTTE GUEST CHAIR



ALTAI SIDE TABLES



PIEDMONT CHEST ON STAND



TIGRIS BED

COUP D'ETAT

SAN FRANCISCO

III RHODE ISLAND STREET, SUITE I
SAN FRANCISCO, CA 94103

P. 415-241-9300

INFO@COUPDETATSF.COM



COUPDETATSF.COM

COUP D'ETAT

LOS ANGELES

100 N ROBERTSON BLVD
LOS ANGELES, CA 90048

P. 323-825-5880

INFO@COUPDETATSF.COM



IG @COUPDETATSF

