



**Abuelo Cocktail Table**

*by* DE LA VEGA

*Contemporary*

United States

Rugged modernism at its best in a marriage of textures—leather, wood, and brass—in perfect symmetry. Also available in Coquille D'Oeuf: hand-cracked eggshells in resin and lacquer adorn table top panels.

TCK-DLV-ABUELO



ABUELO COCKTAIL TABLE

# COUP D'ETAT

---

ITEM NO.	DIMENSIONS	UPHOLSTERY DETAIL
TCK-DLV-ABUELO	60" W x 60" D x 17" H	COL: 75 sq ft

---

WOOD OPTIONS:

Wenge  
Walnut  
Oak  
Oxidized Maple  
Ebonized Ash

UPHOLSTERY OPTIONS:

COL  
DLV Collection Leathers

METAL OPTIONS:

Satin Brass  
Satin Nickel  
Oil-Rubbed Bronze  
Antique Bronze  
Gunmetal

ADDITIONAL:

Custom sizes available.  
Price upon request.

EGGSHELL OPTIONS:

Espresso Premium\*  
Jade Premium\*  
Black Premium\*



## Wood for Abuelo & Campanha

by DE LA VEGA



Wenge



Oak



Walnut



Oxidized Maple



Ebonized Ash

## Leather for Case Goods

by DE LA VEGA



ESQUIRE / Deep Blue



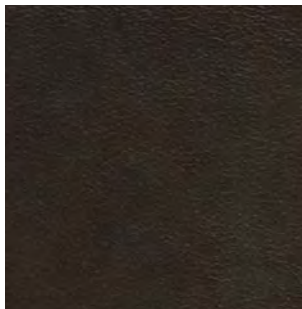
ESQUIRE / Evergreen



ESQUIRE / Navy



ESQUIRE / Black



ESQUIRE / Espresso



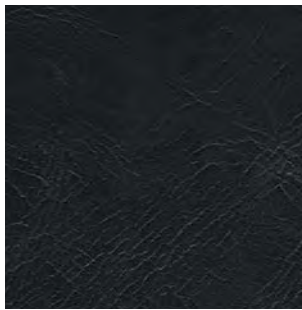
ESQUIRE / Mahogany



ESQUIRE / Merlot



ESQUIRE / Peanut



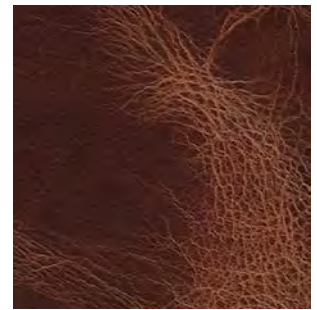
VINTAGE / Black



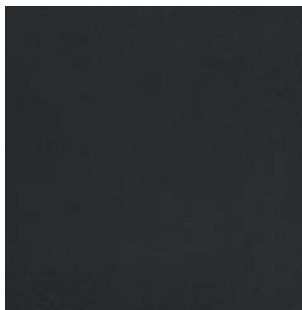
VINTAGE / Chocolate



VINTAGE / Denim



VINTAGE / Tan



WEST-TAN / Black



WEST-TAN / Brown



WEST-TAN / Burgundy



WEST-TAN / Peanut

Metal for Abuelo & Campanha  
by DE LA VEGA



Gunmetal



Antique Bronze



Oiled-Rubbed Bronze



Satin Brass

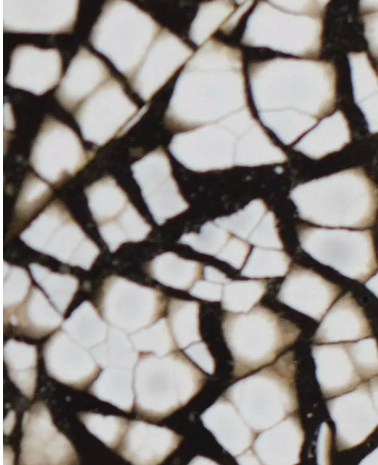


Satin Nickel



Eggshell

by DE LA VEGA



Eggshell in Espresso



Eggshell in Jade



Eggshell in Black

---

COQUILLE D'OEUF

An old-world Vietnamese lacquer technique used to create delicate and unique surfaces. Before there was a white pigment for lacquer, artisans would use bits of duck or chicken egg embedded by hand into the surface.