



## Alumina

by Barovier&Toso

*Contemporary*

Italy

With a side measuring 33 ½", Alumina is a really considerable ceiling lamp and wall sconce, but still giving an appearance of lightness. It is made up by five quadrangular elements decorated with submerged bubbles all completely handcrafted. To complete the composition, four decorative and differently finished metal grilles are added to the five Venetian crystal elements. Thanks to its geometry, Alumina can be used in multiple modules side by side, to create a luminous wall.

LC-BT-7285

LW-BT-7284

DESCRIPTION	CODE	DIMENSIONS	WEIGHT	SWITCHINGS	BULBS
	LC-BT-7285	34 1/2" W 4" H 33 1/2" D	18 lbs	1	4 x 4W G9 Dimmable
	LW-BT-7284	34 1/2" W 33 1/2" H 4" D	18 lbs	1	4 x 4W G9 Dimmable

CERIFICATIONS:    ADDITIONAL:  
 UL                      Bulbs are included.  
 EAC  
 cULus

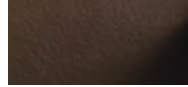
VENETIAN CRYSTAL  
AVAILABLE COLOURS:



CC  
Crystal

BW  
Brown

METAL FINISHES:



ZO  
Satinized Bronze

VENETIAN CRYSTAL  
BESPOKE COLOURS:



IC  
Grey

EK  
Sand

FM  
Smoke

CG  
Cognac

CA  
Caramel



OO  
Gold

DK  
Olive

EL  
Liquid Citron

VA  
Antalia Green

CK  
Periwinkle



AM  
Amethyst

RS  
Light Pink

VI  
Violet

AK  
Cadet Blue

AQ  
Aquamarine



BL  
Light Blue

LQ  
Bluastro

FK  
Indigo