

skram

COUPDETATSF.COM



arak 16-arm chandelier

Q12

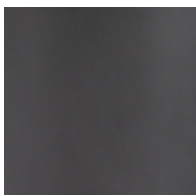


The arak 16-arm chandelier features individually hand-formed porcelain diffusers supported by blackened aluminum arms and a cast bronze hub. Arak products are a collaboration between skram lead designer jacob marks and north carolina artist mimi lothetis, whose innovations (in the transfer of hand-applied graphics to porcelain forms) are a focus of the exploration. 36 inch aluminum down-trod is standard; longer lengths available. Premium quality, high-efficiency L.E.D. light engines provide outstanding quality and output. All skram lighting products rate at 90+ CRI, 2700k and are UL listed. Additional specifications and details for this product are available in 'downloads' section. Professional installation required. Residential or contract use.

skram

Q12 width 60.5 / 153 depth 40.5 / 103 height 24.81 / 63

Metal



BAL: Blackened
Aluminum

Other Materials



Graphics