



Bicorn Cafe Table

by BassamFellows

Contemporary

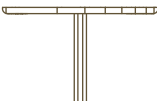
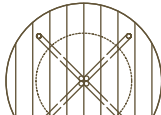
Italy

The Bicorn Chair and Café Table were the result of an exciting and challenging collaboration with Isay Weinfeld, who invited us to create designs for a landmark dining space in New York City. The chairs had rigorous criteria –they needed to be suitable for outdoor use, they needed to be stackable, and they also needed to be in one of our distinctive, beautiful materials. The chair is light with fully integrated elements. The arms are wholly cantilevered and appear to float unsupported, while the metal frame forms a back loop that can be used as a handle to assist with moving. The backrest and seat are both solid carved wood. The matching table uses the same materials as the chairs, with four continuous bent tubes that create the feet for the design, converging into a quad column. Available in Iroko for outdoor use.

CB-595 Bicorn Cafe Table

BICORN CAFE TABLE

COUP D'ETAT

DESCRIPTION	DIMENSIONS	WEIGHT	CODE
 	W 32" D 32" H 28 3/8" T 1 1/4"	149.6 lbs	CB-595-A-SS-NANO CB-595-I-SS-NANO CB-595-O-SS-NANO CB-595-W-SS-NANO

CB-595
Bicorn Cafe Table

WOOD TYPES:

Solid Ash (A)
Solid Oak (O)
Solid Iroko (I)
Solid Walnut (W)

WOOD FINISHES:

Ebonized black lacquer on Ash (EB) or bleached, white pigment, matte acrylic on Ash (BL). Raw effect lacquer on Oak (RE). Hand rubbed outdoor oil on Iroko (NA). Hand rubbed natural oil on Oak or Walnut (NA), or hand rubbed black oil on Walnut (BO).

METAL FINISHES:

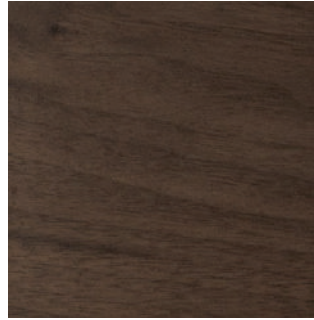
Tubular stainless steel (SS), or tubular stainless steel with smoke powder coat finish (SP), or satin nickel (SN), satin brass (SB), bronze (BZ), gunmetal (GM), or custom metal (CM) nanoceramic coated tubular stainless steel.

Wood

by BassamFellows



Walnut
W-NA



Walnut Black Oil
W-BO



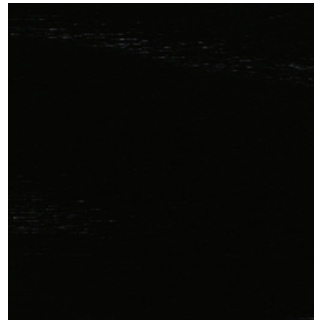
Oak
O-NA



Oak Raw Effect
O-RE



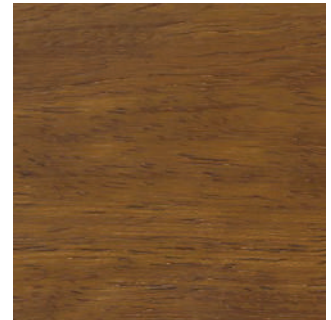
White Ash
A-BL



Ebonized Ash
A-EB



Teak
T-NA



Iroko
I-NA



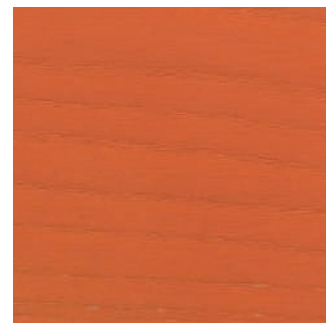
Sage Green Ash
A-SG



Sun Yellow Ash
A-SY



Horizon Blue Ash
A-HB



Mesa Red Ash
A-MR

Metal

by BassamFellows



Matte Black
BP



Satin Nickel
SN



Satin Brass
SB



Bronze
BZ



Gunmetal
GM



Oxidized Brass
BR



Stainless Steel
SS

Nanoceramic coated steel is a more durable and environmentally improved alternative to traditional metal plating where nano particles of metal are mixed with resin and sprayed onto the metal surface versus being placed in a chemical bath.

Additional colors available. Minimum and upcharge may apply.

Matte Black
Powder coated steel

Satin Nickel
Nanoceramic coated steel

Satin Brass
Nanoceramic coated steel

Bronze
Nanoceramic coated steel

Gunmetal
Nanoceramic coated steel

Oxidized Brass
Hand brushed solid brass

Stainless Steel
Hand brushed stainless steel