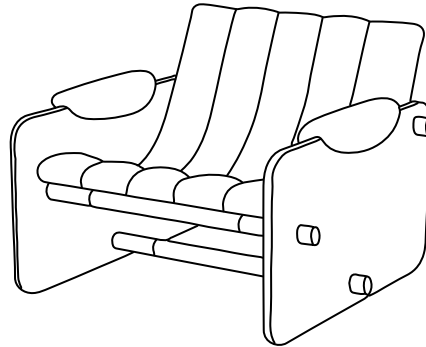




BORSO CLUB CHAIR

COUP STUDIO

**BORSO CLUB CHAIR**



Item No.	Dimensions	Seat	Arm Height	Weight
UP-CS-56	36.5" W x 36" D x 30" H	18" D	22"	50 lbs
UP-CS-56-GRADED-IN	36.5" W x 36" D x 30" H	18" D	22"	50 lbs

**Wood Finish Options**

- Walnut
- Oiled Walnut
- Saddle
- Natural Oak
- Midnight
- Midnight Gloss

**Upholstery Detail**

- Vertical Channel Tufting
- Floating Curved Seat
- Upholstered Arm Pads
- COM: 3 yards (Plain 54" Wide)
- COL: 55 sq. ft. (15% Upcharge)

**Lead Time**

14 - 16 Weeks

**Additional Info**

Custom sizes and finishes available.

**Metal Finish Options**

**Category B**

- Satin Brass
- Antique Brass
- Oil-Rubbed Bronze
- Gunsmoke

**Graded-In Options**

New Zealand Sheepskin

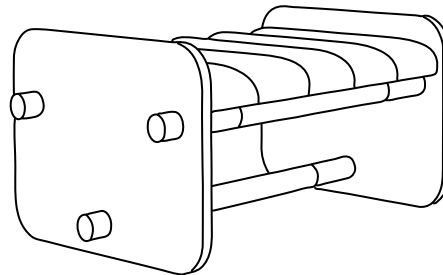




BORSO CLUB OTTOMAN

COUP STUDIO

**BORSO CLUB OTTOMAN**



**Item No.**

**Dimensions**

**Weight**

UP-CS-56-OTTOMAN

36.5" W x 26" D x 17.5" H

15 lbs

UP-CS-56-OTTOMAN-GRADED-IN

36.5" W x 26" D x 17.5" H

15 lbs

**Wood Finish Options**

Walnut

Oiled Walnut

Saddle

Natural Oak

Midnight

Midnight Gloss

**Upholstery Detail**

Vertical Channel Tufting

COM: 3 yards (Plain 54" Wide)

COL: 55 sq. ft. (15% Upcharge)

**Lead Time**

14 - 16 Weeks

**Additional Info**

Custom sizes and finishes available.

**Metal Finish Options**

**Category B**

Satin Brass

Antique Brass

Oil-Rubbed Bronze

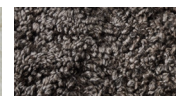
Gunsmoke

**Graded-In Options**

New Zealand Sheepskin



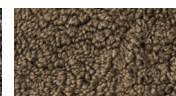
Ivory



Cappuccino



Graphite



Taupe