

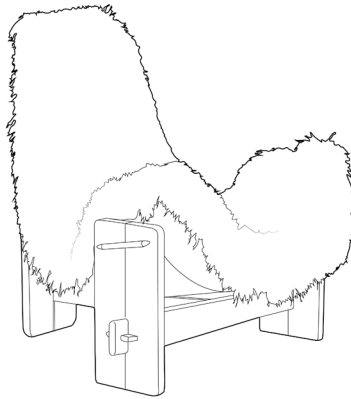
HANDMADE IN CALIFORNIA



COUP STUDIO

SLING CHAIR

SLING CHAIR



| ITEM NO. | DIMENSIONS | SEAT HEIGHT | WEIGHT |
|--------------|-----------------------|-------------|--------|
| UP-CS-55-FUR | 30" W x 35" D x 30" H | 14" | 20 lbs |

GRADED-IN SHEEPSKIN

| ITEM NO. | DIMENSIONS | SEAT HEIGHT | WEIGHT |
|----------|-----------------------|-------------|--------|
| UP-CS-55 | 30" W x 35" D x 30" H | 14" | 20 lbs |

COL : Sheepskin Hides: 21 sq ft or 3 hides (Average hide size 6-8 sq ft)

Fabric requirement for backside of seat: 2 YARDS (plain 54" wide)

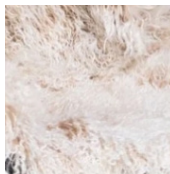
Fabric requirement for sling: 2 YARDS (54" wide canvas recommended)

LEG FINISH

- WALNUT
- OILED WALNUT
- SADDLE
- NATURAL OAK
- MIDNIGHT
- MIDNIGHT GLOSS

GRADED-IN SHEEPSKIN

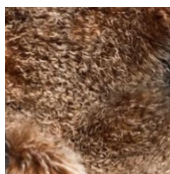
(Graded-in sheepskin includes matching tone-on-tone fabric)



CHAMPAGNE



TAUPE



CHESTNUT

LEAD TIME

10-12 WEEKS

ADDITIONAL INFO

Custom sizes & finishes available