



CB-36 Circular Coffee Table  
in solid Walnut with bespoke base in polished stainless steel.

## Circular Coffee Tables

by BassamFellows

*Contemporary*

Italy

The Circular Table Collection marries pure geometry with high craft. From above, the piece emanates a strong geometric identity given that the circle is divided equally into wedge shapes with the grain of the wood radiating from the center. The tabletop is cut into three equal segments separated by a reveal and held together on the underside with a solid stainless-steel ring. The reveal allows the pie-shaped solid wood wedges to move freely with variations in humidity eliminating warping and splitting. A sturdy but agile floating presence is created by the table's base, made from circular sections of solid stainless steel— not hollow tubing – allowing the legs to be bent to the tightest possible radius for elegance and sophistication.

CB-36 Circular Coffee Table

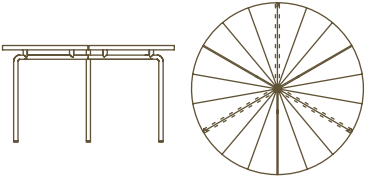
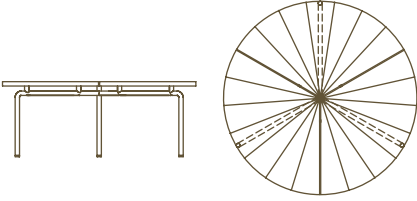
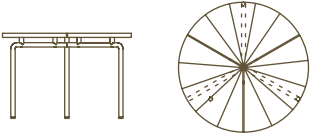
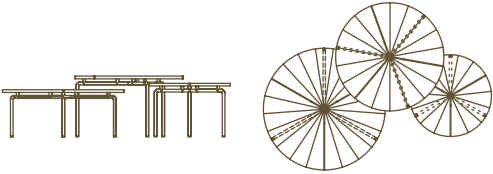
CB-361 Circular Coffee Table Large

CB-37-60 Circular Side Coffee Table



CIRCULAR COFFEE TABLES

COUP D'ETAT

DESCRIPTION	DIMENSIONS	WEIGHT	CODE
 <p>CB-36 Circular Coffee Table</p>	<p>W 31 1/2" D 31 1/2" H 17 3/4" T 3/4"</p>	<p>100 lbs</p>	<p>CB-36-A-SS-NANO CB-36-O-SS-NANO CB-36-W-SS-NANO</p>
 <p>CB-361 Circular Coffee Table Large</p>	<p>W 35 1/2" D 35 1/2" H 13 3/4" T 3/4"</p>	<p>95 lbs</p>	<p>CB-361-A-SS-NANO CB-361-O-SS-NANO CB-361-W-SS-NANO</p>
 <p>CB-37-60 Circular Side Coffee Table</p>	<p>W 23 5/8" D 23 5/8" H 15 3/4" T 3/4"</p>	<p>95 lbs</p>	<p>CB-37-60-A-SS-NANO CB-37-60-O-SS-NANO CB-37-60-W-SS-NANO</p>
 <p>CB-36 Circular Coffee Table CB-361 Circular Coffee Table Large CB-37-60 Circular Side Coffee Table</p>			<p>A-SS-NANO O-SS-NANO W-SS-NANO</p>

WOOD TYPES:

Solid Ash (A)  
Solid Oak (O)  
Solid Walnut (W)

WOOD FINISHES:

Ebonized black lacquer on Ash (EB) or bleached, white pigment, matte acrylic on Ash (BL). Raw effect lacquer on Oak (RE). Hand rubbed natural oil on Oak or Walnut (NA), or hand rubbed black oil on Walnut (BO).

METAL FINISHES:

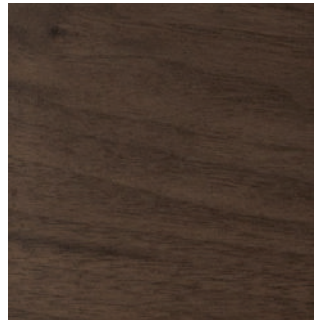
Solid stainless steel (SS), or solid stainless steel with black powder coat finish (BP), or satin nickel (SN), satin brass (SB), bronze (BZ), gunmetal (GM), or custom metal (CM) nanoceramic coated solid stainless steel.

Wood

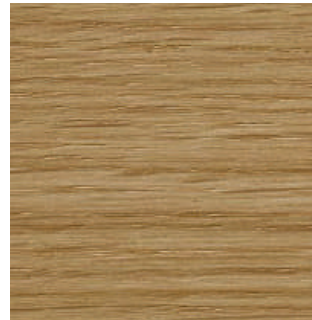
by BassamFellows



Walnut  
W-NA



Walnut Black Oil  
W-BO



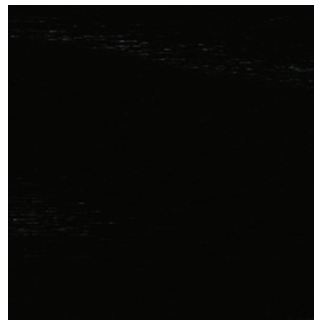
Oak  
O-NA



Oak Raw Effect  
O-RE



White Ash  
A-BL



Ebonized Ash  
A-EB



Teak  
T-NA



Iroko  
I-NA



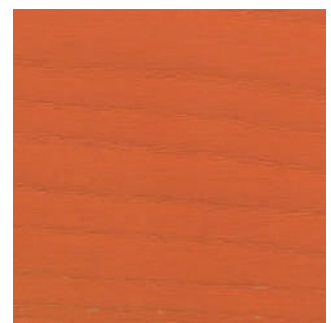
Sage Green Ash  
A-SG



Sun Yellow Ash  
A-SY



Horizon Blue Ash  
A-HB



Mesa Red Ash  
A-MR

## Metal

by BassamFellows



Matte Black  
BP



Satin Nickel  
SN



Satin Brass  
SB



Bronze  
BZ



Gunmetal  
GM



Oxidized Brass  
BR



Stainless Steel  
SS

Nanoceramic coated steel is a more durable and environmentally improved alternative to traditional metal plating where nano particles of metal are mixed with resin and sprayed onto the metal surface versus being placed in a chemical bath.

Additional colors available. Minimum and upcharge may apply.

**Matte Black**  
Powder coated steel

**Satin Nickel**  
Nanoceramic coated steel

**Satin Brass**  
Nanoceramic coated steel

**Bronze**  
Nanoceramic coated steel

**Gunmetal**  
Nanoceramic coated steel

**Oxidized Brass**  
Hand brushed solid brass

**Stainless Steel**  
Hand brushed stainless steel