



CB-35 Circular Dining Table in Walnut and brushed Stainless Steel.

Circular Dining Table

by BassamFellows

Contemporary

United States

The Circular Table Collection marries pure geometry with high craft. From above, the piece emanates a strong geometric identity given that the circle is divided equally into wedge shapes with the grain of the wood radiating from the center. The tabletop is cut into three equal segments separated by a reveal and held together on the underside with a solid brass or stainless-steel ring. The reveal allows the pie-shaped solid wood wedges to move freely with variations in humidity eliminating warping and splitting. (Custom versions of the table include four legs with four equal tabletop segments, allowing seating for four, eight or larger, depending on the size of the table). A sturdy but agile floating presence is created by the table's base, made from circular sections of solid naval brass or stainless steel— not hollow tubing – allowing the legs to be bent to the tightest possible radius for elegance and sophistication.

CB-35 Circular Dining Table

CIRCULAR DINING TABLE

COUP D'ETAT



CIRCULAR DINING TABLE

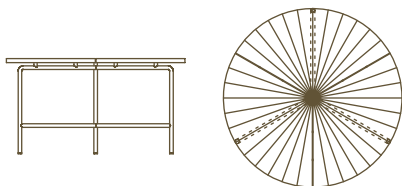
COUP D'ETAT

DESCRIPTION

DIMENSIONS

WEIGHT

CODE



W 53 1/8"

165 lbs

CB-35-A

D 53 1/8"

CB-35-O

H 28 3/8"

CB-35-W

T 1 1/4"

CB-35

Circular Dining Table

WOOD TYPES:

Solid Ash (A)
Solid Oak (O)
Solid Walnut (W)

WOOD FINISHES:

Ebonized black lacquer on Ash (EB) or bleached, white pigment, matte acrylic on Ash (BL). Raw effect lacquer on Oak (RE). Hand rubbed penetrating polyurethane on Oak or Walnut (NA), or hand rubbed black oil on Walnut (BO).

METAL FINISHES:

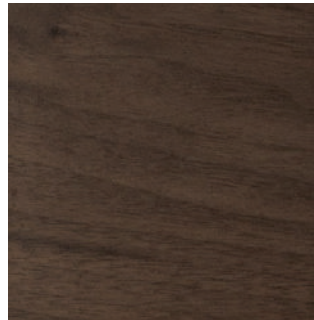
Solid naval brass, naturally oxidized (BR) or solid stainless steel (SS) three-leg base.

Wood

by BassamFellows



Walnut
W-NA



Walnut Black Oil
W-BO



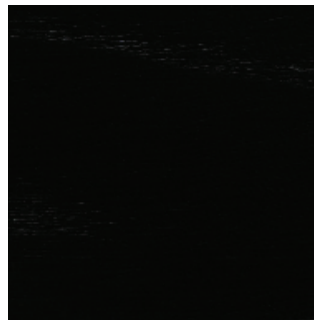
Oak
O-NA



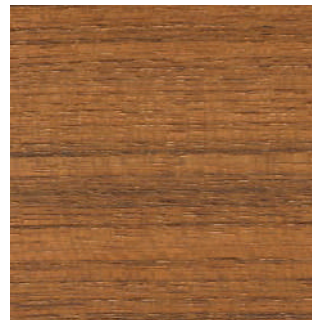
Oak Raw Effect
O-RE



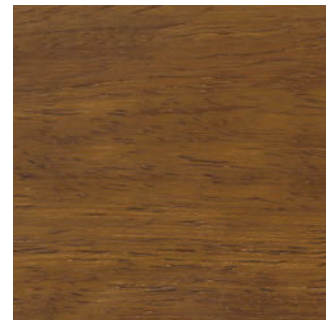
White Ash
A-BL



Ebonized Ash
A-EB



Teak
T-NA



Iroko
I-NA



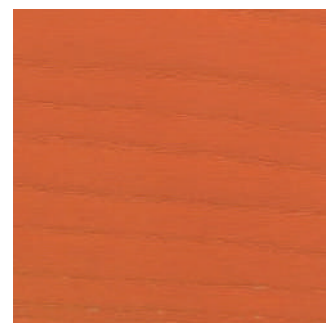
Sage Green Ash
A-SG



Sun Yellow Ash
A-SY



Horizon Blue Ash
A-HB



Mesa Red Ash
A-MR

Metal

by BassamFellows



Matte Black
BP



Satin Nickel
SN



Satin Brass
SB



Bronze
BZ



Gunmetal
GM



Oxidized Brass
BR



Stainless Steel
SS

Nanoceramic coated steel is a more durable and environmentally improved alternative to traditional metal plating where nano particles of metal are mixed with resin and sprayed onto the metal surface versus being placed in a chemical bath.

Additional colors available. Minimum and upcharge may apply.

Matte Black
Powder coated steel

Satin Nickel
Nanoceramic coated steel

Satin Brass
Nanoceramic coated steel

Bronze
Nanoceramic coated steel

Gunmetal
Nanoceramic coated steel

Oxidized Brass
Hand brushed solid brass

Stainless Steel
Hand brushed stainless steel