



CB-122 Cluster Stool in Ebonized Oak

Cluster Stool

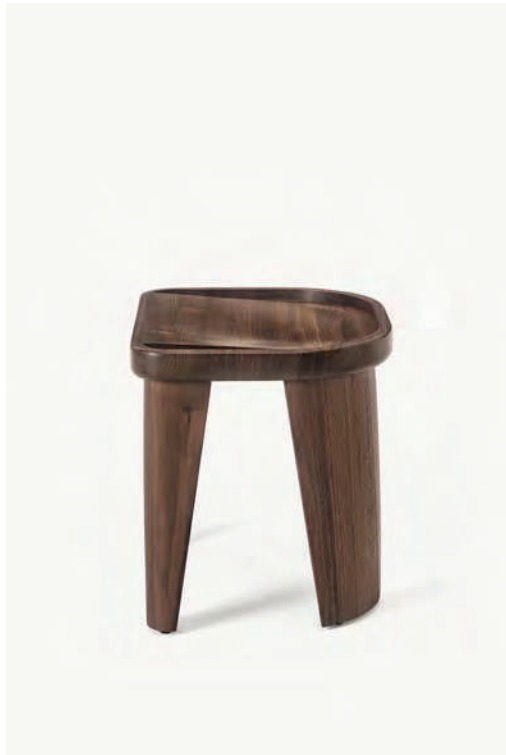
by BassamFellows

Contemporary

Italy

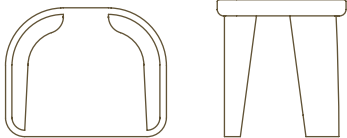
Some of the most innovative, powerful design takes its strength from its sculptural elements. In certain cases it is a sense of fragility that offers impact. At other times it is the imposing, muscular heft of the object that strikes a chord: A strong sense of presence. The BassamFellows Cluster Stool is a simple, easy to move object for sitting on, and it stacks neatly away without the need to be hidden. A group of Clusters looks “on purpose,” and pleasing to the eye. It belongs to a canon of utilitarian, Modernist stools and looks like the kind of ultra-functional object you may find in a Japanese onsen – a design that may have existed unchanged for centuries. It is stark, but the dip in the seat and the rounded taper of its four legs is elegant and sculptural.

CB-122 Cluster Stool



CLUSTER STOOL

COUP D'ETAT

DESCRIPTION	DIMENSIONS	WEIGHT	CODE
	W 19 5/8" D 15 3/4" H 16 3/4"	22.9 lbs	CB-122-O CB-122-W

CB-122
Cluster Stool

WOOD TYPES:

Solid Oak (O)
Solid Walnut (W)

WOOD FINISHES:

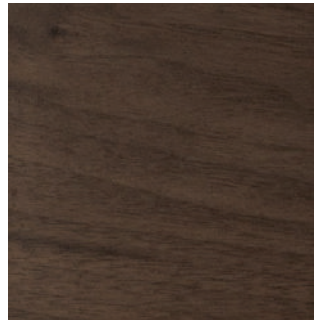
Ebonized black lacquer on Oak (EB). Raw effect lacquer on Oak (RE). Hand rubbed natural oil on Oak or Walnut (NA), or hand rubbed black oil on Walnut (BO).

Wood

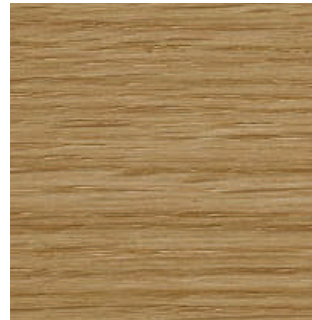
by BassamFellows



Walnut
W-NA



Walnut Black Oil
W-BO



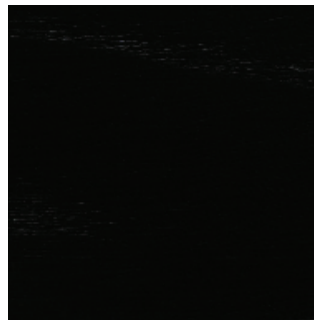
Oak
O-NA



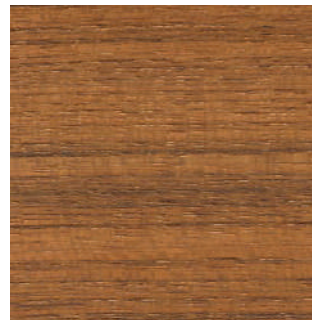
Oak Raw Effect
O-RE



White Ash
A-BL



Ebonized Ash
A-EB



Teak
T-NA



Iroko
I-NA



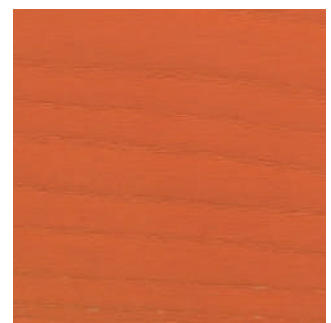
Sage Green Ash
A-SG



Sun Yellow Ash
A-SY



Horizon Blue Ash
A-HB



Mesa Red Ash
A-MR