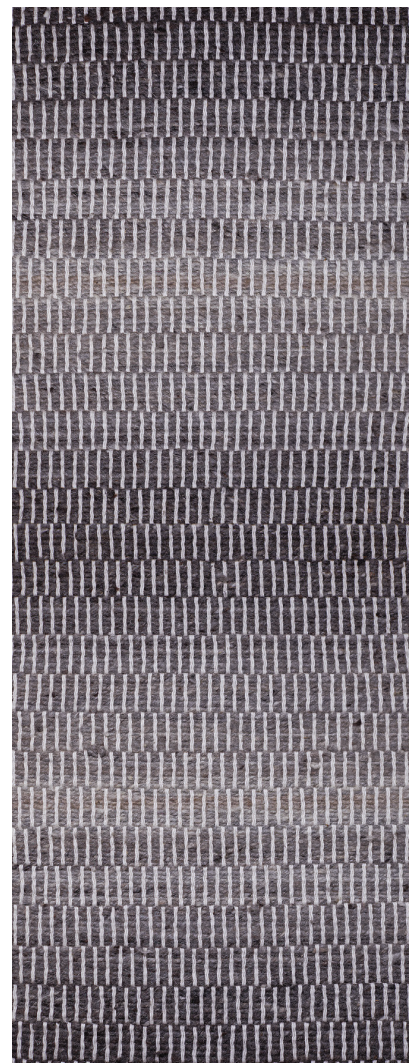


COUP D'ETAT



Compound Weave Rug - Dégradé *by Madda Studio*

Contemporary

Mexico

The Compound Weave has its roots in the textile traditions of Sardinia, Italy, and was initially developed through a collaboration with Bonetti Kozerski Architecture D.P.C. This is an example of how Maddalena integrates her formal textile training from Italy into pieces created in Mexico.

Dégradé is the gradual blending of different wool tones to produce an ombre effect.

Size: Made to Order. Larger than 6ft wide will be joined together in panels. Length is unlimited. Handwoven in Mexico on a pedal loom.

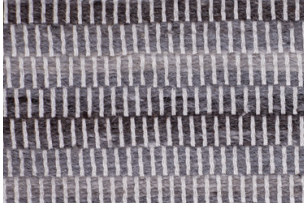
Material: 100% Undyed Handspun Wool, 100% Undyed Cotton

Maintenance: Professional rug cleaning recommended. Spot clean with warm water and pH neutral soap.

Color: Madda Studio works with four tonal categories: white, light-grey, medium-grey, and dark-grey. These different hues create their various designs, and can have a lighter or darker feel depending on how the tones of wool are used and combined.

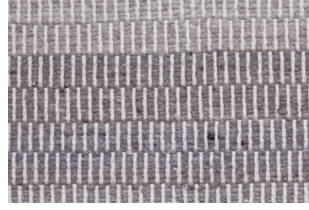
Item Number: MS-RUG-C-DE

COUP D'ETAT



STRIPE EFFECT

This design combines light, medium, and dark yarn, to create contrasting lines, which give rise to a striped effect. The overall aesthetic of the rug can be either light or dark.



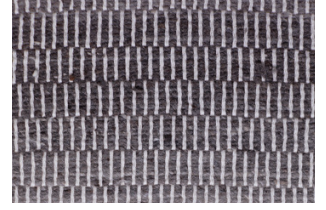
BAND

Wider areas of a single tone characterize this design. The bands are irregular and can be wider or narrower. There is no set pattern. The repetition of bands works well with multi-panel rugs because they create different rhythms, which lend themselves to unique designs.



MELANGE

Melange is the irregular combination of similar wool tones. Melange comes in three tones: light, medium, and dark. This design produces a uniform feeling by introducing tonal variation without much contrast.



DEGRADE

Degrade is the gradual blending of different wool tones to produce an ombre effect.

SEAM



BLANKET STITCH

EDGING



GREY EDGE



NATURAL CROCHET

CUSTOM SIZES EXAMPLES

*Madda Studio products are handmade and variations in color, size, and design may occur.

