



CB-215 Dish Stool/Side Table

Dish Stools

by BassamFellows

Contemporary

Italy

The BassamFellows Dish Stools are companion pieces to the Pipe Chair collection. The stools have the striking silhouette and strength of an A-frame stance. The tubular stainless- steel structure holds a solid wood seat that is carved in two directions. From the top, the seat is a perfect circle dished for ergonomic comfort while underneath, it is carved to integrate with the frame, melding two materials together – structure and wood. Originally the design brief required the stools to be appropriate for both indoor and outdoor use. Outdoor versions are available in appropriate woods such as Teak or Iroko. The dining height stool/table is stackable.

CB-215 Dish Stool/Side Table


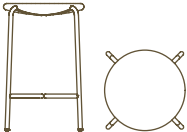
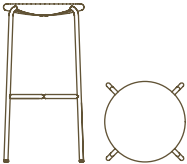
CB-216 Dish Counter Stool

CB-217 Dish Bar Stool



DISH STOOLS

COUP D'ETAT

DESCRIPTION	DIMENSIONS	WEIGHT	CODE
 <p>CB-215 Dish Stool/Side Table</p>	<p>W 15 3/4" D 15 3/4" H 18 1/8"</p>	<p>15.4 lbs</p>	<p>CB-215-O-SS CB-215-O-SS-NANO CB-215-W-SS CB-215-W-SS-NANO</p>
 <p>CB-216 Dish Counter Stool</p>	<p>W 15 3/4" D 15 3/4" H 24 7/8"</p>	<p>17.6 lbs</p>	<p>CB-216-O-SS CB-216-O-SS-NANO CB-216-W-SS CB-216-W-SS-NANO</p>
 <p>CB-217 Dish Bar Stool</p>	<p>W 15 3/4" D 15 3/4" H 30 7/8"</p>	<p>22 lbs</p>	<p>CB-217-O-SS CB-217-O-SS-NANO CB-217-W-SS CB-217-W-SS-NANO</p>

WOOD TYPES:

Solid Oak (O)
Solid Walnut (W)

WOOD FINISHES:

Ebonized black lacquer on Oak (EB). Raw effect lacquer on Oak (RE). Hand rubbed natural oil on Oak or Walnut (NA), or hand rubbed black oil on Walnut (BO).

UPHOLSTERY:

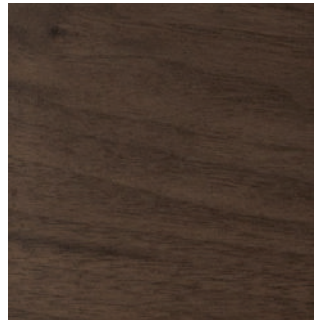
Tubular stainless steel (SS) or tubular stainless steel with smoke powder coat finish (SP) included in base price, or satin nickel (SN), satin brass (SB), bronze (BZ), gunmetal (GM), or custom metal (CM) nanoceramic coated tubular stainless steel.

Wood

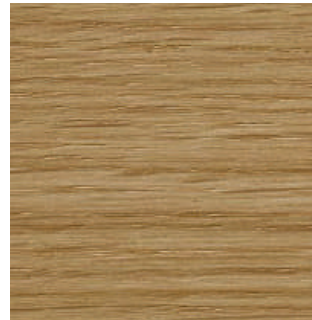
by BassamFellows



Walnut
W-NA



Walnut Black Oil
W-BO



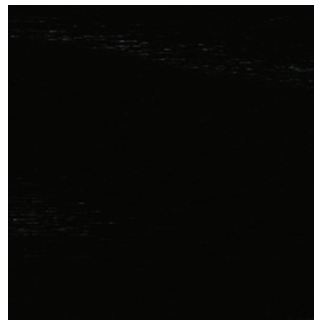
Oak
O-NA



Oak Raw Effect
O-RE



White Ash
A-BL



Ebonized Ash
A-EB



Teak
T-NA



Iroko
I-NA



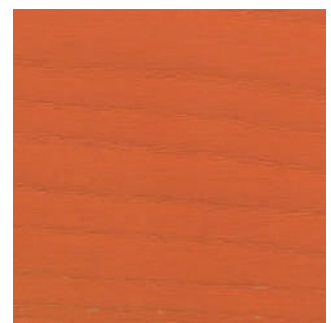
Sage Green Ash
A-SG



Sun Yellow Ash
A-SY



Horizon Blue Ash
A-HB



Mesa Red Ash
A-MR

Metal

by BassamFellows



Matte Black
BP



Satin Nickel
SN



Satin Brass
SB



Bronze
BZ



Gunmetal
GM



Oxidized Brass
BR



Stainless Steel
SS

Nanoceramic coated steel is a more durable and environmentally improved alternative to traditional metal plating where nano particles of metal are mixed with resin and sprayed onto the metal surface versus being placed in a chemical bath.

Additional colors available. Minimum and upcharge may apply.

Matte Black
Powder coated steel

Satin Nickel
Nanoceramic coated steel

Satin Brass
Nanoceramic coated steel

Bronze
Nanoceramic coated steel

Gunmetal
Nanoceramic coated steel

Oxidized Brass
Hand brushed solid brass

Stainless Steel
Hand brushed stainless steel