



## Equus Pyramid Pendant

*by* Konekt

*Contemporary*

United States

The Equus Pyramid Pendant features meticulously welded, hand-finished brass with a horse hair trim. This pairing highlights a balance between contrasting textures and characteristics — wispy yet coarse horse hair, enhanced with an ethereal glow, softens the rigidity of the angular brass shade.

Available in two sizes.

**Small:** 8" W x 8" D x 11.25" H

**Large:** 10" W x 10" D x 17" H

\*Drop length cut to order.

**Materials:** Brass and Horse Hair.

DESCRIPTION	DIMENSIONS	LAMPING	INCLUSIONS
-------------	------------	---------	------------



**Small**

8" W x 8" D x 11.25" H

E12 | 120V | 60W

10W dimmable LED bulb included  
120V; 800 lumens; 2700k



**Large**

10" W x 10" D x 17" H

E26 | 120V | 60W

10W dimmable LED bulb included  
120V; 800 lumens; 2700k

**METAL:**

- Polished Brass
- Satin Brass
- Antique Brass
- Oil-rubbed Bronze
- Satin Black
- Satin Nickel
- Antique Nickel
- Polished Nickel

**HORSEHAIR:**

- Light Silver
- Medium Silver
- Flaxen Sorrel
- Dark Flaxen Sorrel
- Palomino
- Jet Black

**ADDITIONAL:**

UL listed.  
Pricing includes up to 78"H. For longer drop lengths inquire for custom quote.

Metal Finish Options for Equus Pyramid Pendant  
by Konekt



Satin Brass



Polished Brass



Antique Brass



Oil-Rubbed Bronze



Satin Black



Satin Nickel



Antique Nickel



Polished Nickel

Horsehair Options

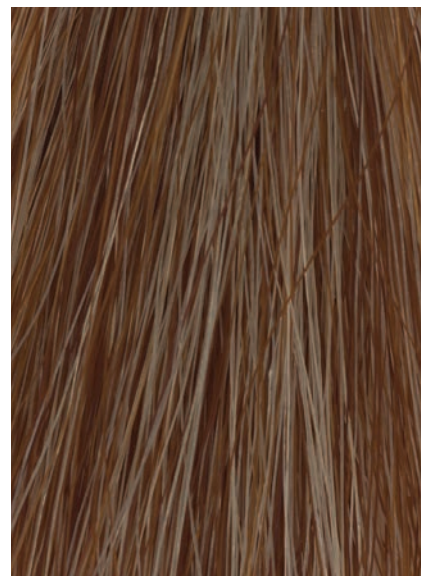
by Konekt



Light Silver *Horsehair*



Medium Silver *Horsehair*



Flaxen Sorrel *Horsehair*



Dark Flaxen Sorrel *Horsehair*



Palomino *Horsehair*



Jet Black *Horsehair*