



CB-457 Geometric Daybed in Walnut and Gunmetal.

Geometric Daybed

by BassamFellows

Contemporary

Italy

The Geometric Collection celebrates the sublimity of pure geometry championed by the Wiener Werkstätte and the Bauhaus. The Geometric Daybed's seat deck is comprised of a wood frame with pegged slats engineered to allow for variable flex. The tubular steel base creates a continuous arc that holds leather cushions made of dual-density foam for comfort and support. Leather-upholstered cushioning is precision-crafted to fit securely and snugly within the tubular steel armature. Tufted cushions feature cross-angle seams that radiate from the tuft to align with the posts of the tubular steel structure, a gesture that highlights the design's overall geometry, linking back to the importance of linearity and architectural draftsmanship inherent in BassamFellows' work.

CB-457 Geometric Daybed



GEOMETRIC DAYBED

COUP D'ETAT

DESCRIPTION

DIMENSIONS

CODE



W 82"

CB-457-A-NANO

D 33 5/8"

CB-457-O-NANO

SH 13 1/8"

CB-457-W-NANO

CB-457

Geometric Daybed

WOOD TYPES:

Solid Ash (A)
Solid Oak (O)
Solid Walnut (W)

WOOD FINISHES:

Ebonized black lacquer on Ash (EB) or bleached, white pigment, matte acrylic on Ash (BL). Raw effect lacquer on Oak (RE). Hand rubbed natural oil on Oak or Walnut (NA), or hand rubbed black oil on Walnut (BO).

METAL FINISHES:

Satin nickel (SN), satin brass (SB), bronze (BZ), gunmetal (GM), or custom metal (CM) nanoceramic coated tubular steel.

SEAT DECK:

Solid wood seat deck with pegged solid wood slats.

LEATHER:

A - COL
Coach
Elegant

UPHOLSTERY:

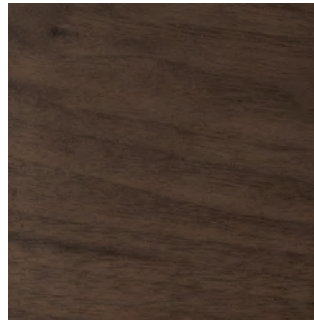
Foam with inverted seam and knife edge with double topstitch.

Wood

by BassamFellows



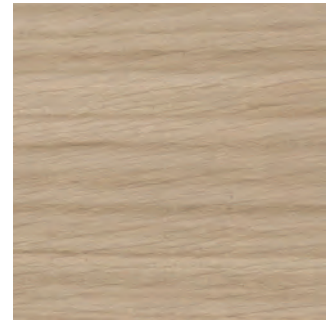
Walnut
W-NA



Walnut Black Oil
W-BO



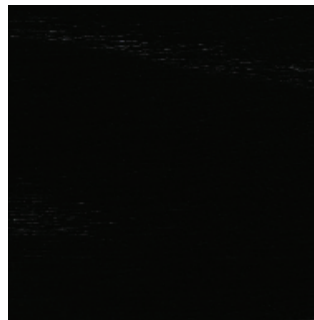
Oak
O-NA



Oak Raw Effect
O-RE



White Ash
A-BL



Ebonized Ash
A-EB



Teak
T-NA



Iroko
I-NA



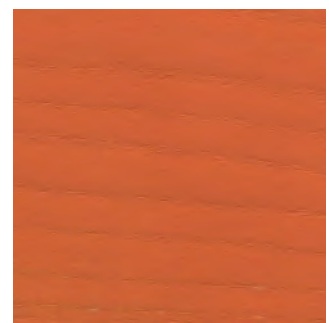
Sage Green Ash
A-SG



Sun Yellow Ash
A-SY



Horizon Blue Ash
A-HB



Mesa Red Ash
A-MR

Metal

by BassamFellows



Matte Black
BP



Satin Nickel
SN



Satin Brass
SB



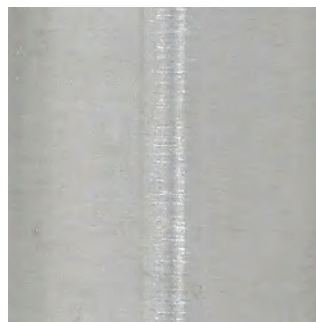
Bronze
BZ



Gunmetal
GM



Oxidized Brass
BR



Stainless Steel
SS

Nanoceramic coated steel is a more durable and environmentally improved alternative to traditional metal plating where nano particles of metal are mixed with resin and sprayed onto the metal surface versus being placed in a chemical bath.

Additional colors available. Minimum and upcharge may apply.

Matte Black
Powder coated steel

Satin Nickel
Nanoceramic coated steel

Satin Brass
Nanoceramic coated steel

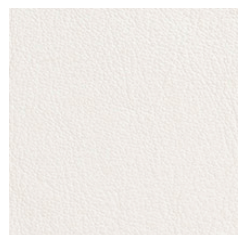
Bronze
Nanoceramic coated steel

Gunmetal
Nanoceramic coated steel

Oxidized Brass
Hand brushed solid brass

Stainless Steel
Hand brushed stainless steel

Coach
by BassamFellows



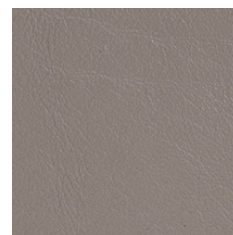
00118 Milk



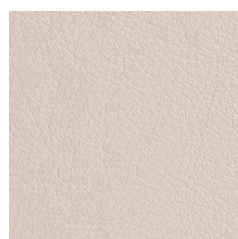
11073 Pale Gray



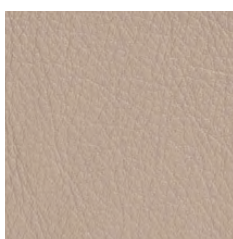
11049 Medium Gray



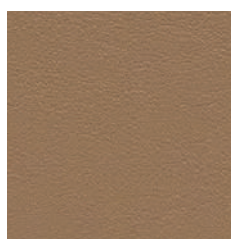
13048 Elephant



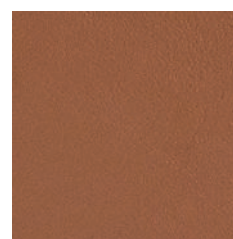
01061 Gray Beige



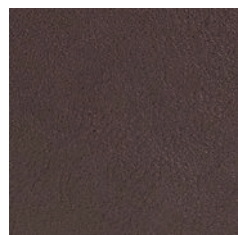
13072 Taupe



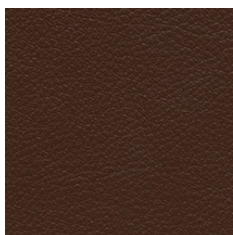
02119 Camel



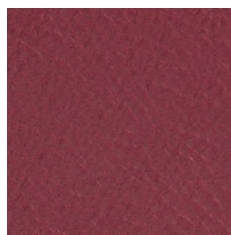
33004 British Tan



93129 Dark Chocolate



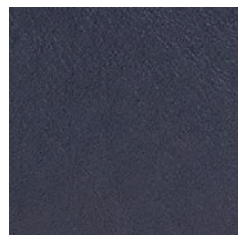
93109 Topaz Brown



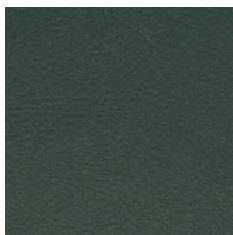
35126 Oxblood



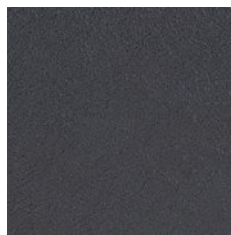
17027 Cadet Blue



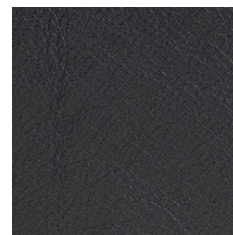
77127 Dark Navy



98015 Dark Green



91102 Anthracite



99999 Black

Coach is a chrome free, soft and pliable semi-aniline leather that offers outstanding comfort combined with excellent durability and is suitable for public environments.

Additional colors available. Minimum and upcharge may apply.

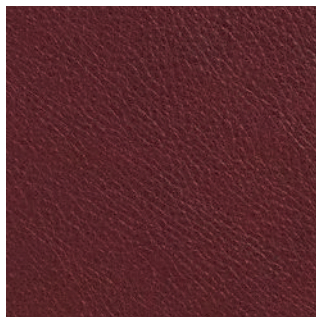
Raw Material
Grain leather from
Scandinavian cattle

Finish
Semi-Aniline leather

Price Grade
A

Elegant

by BassamFellows



95947 Oxblood



11038 Platinum Gray



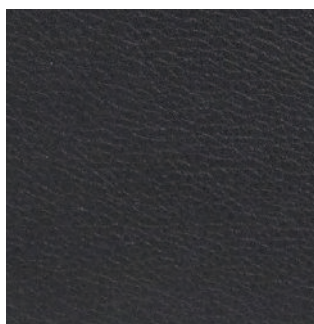
43024 Camel



43807 British Tan



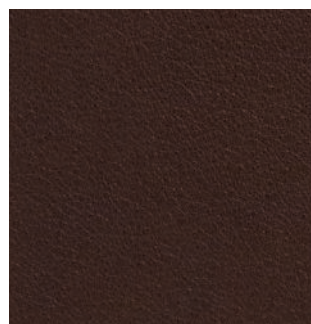
48027 Olive



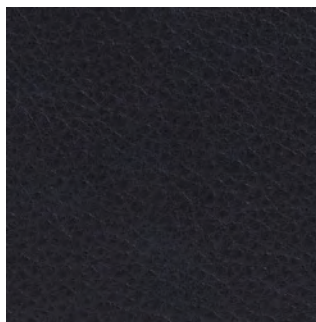
91059 Anthracite



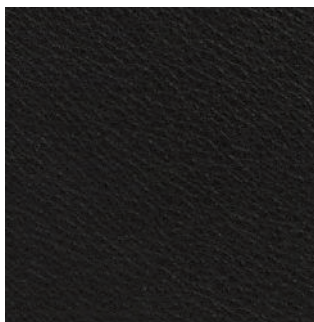
93718 Dark Cognac



93957 Dark Brown



97026 Dark Navy



99001 Black

Elegant grain leather is aniline-dyed with a batique-effect that displays the natural character of the original Scandinavian cattle hide.

Additional colors available. Minimum and upcharge may apply.

Raw Material
Grain leather from
Scandinavian cattle

Finish
Pure aniline leather

Price Grade
A