



CB-458 Geometric Sofa

## Geometric Sofa by BassamFellows

*Contemporary*  
Italy

The Geometric Collection from BassamFellows celebrates the sublimity of pure geometry championed by the Wiener Werkstätte and the Bauhaus. The Geometric Sofa elegantly combines a variety of materials in a single design. It features an ergonomically shaped seat carved from solid wood and a lightweight pellicle skin of Vienna caning. The nanoceramic coated tubular steel is wrapped with natural grain leather for high touch comfort and to conceal all welds, joinery, and seams, forming a signature element that runs through the Geometric Collection. Leather wrapping also provides extra comfort and support by connecting the two structural elements of the sofa's tubular steel back. Seat and back cushions feature knife edge construction and inverted seams.

CB-458 Geometric Sofa



## GEOMETRIC SOFA

# COUP D'ETAT

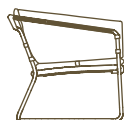
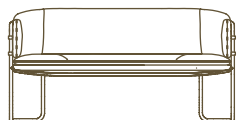
---

### DESCRIPTION

### DIMENSIONS

### CODE

---



W 55 1/8"  
D 28 3/8"  
H 27 3/4"  
SH 15 1/2"

CB-458-W

CB-457

Geometric Daybed

---

### WOOD TYPES:

Solid Ash (A)  
Solid Oak (O)  
Solid Walnut (W)

### WOOD FINISHES:

Ebonized black lacquer on Ash (EB) or bleached, white pigment, matte acrylic on Ash (BL). Raw effect lacquer on Oak (RE). Hand rubbed natural oil on Oak or Walnut (NA), or hand rubbed black oil on Walnut (BO).

### METAL FINISHES:

Satin nickel (SN), satin brass (SB), bronze (BZ), gunmetal (GM), or custom metal (CM) nanoceramic coated tubular steel.

### SEAT:

Natural Vienna Cane with double layer and reinforcing mesh (VC) included in base price.

### UPHOLSTERY:

Foam with inverted seam and knife edge with double topstitch.

### LEATHER:

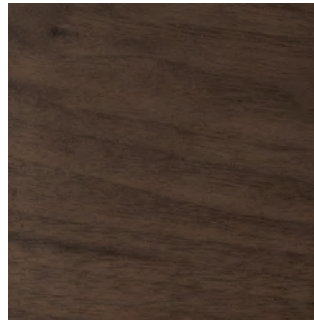
A - COL  
Coach  
Elegant  
  
B  
Comfort

Wood

by BassamFellows



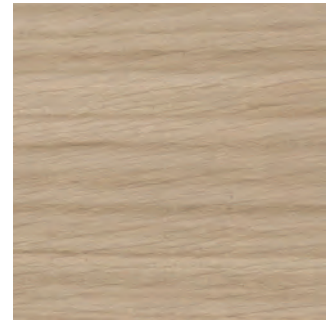
Walnut  
W-NA



Walnut Black Oil  
W-BO



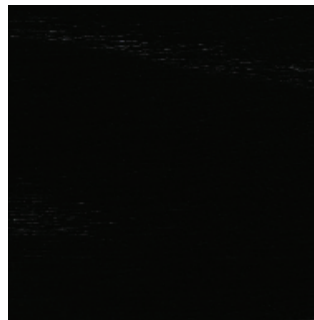
Oak  
O-NA



Oak Raw Effect  
O-RE



White Ash  
A-BL



Ebonized Ash  
A-EB



Teak  
T-NA



Iroko  
I-NA



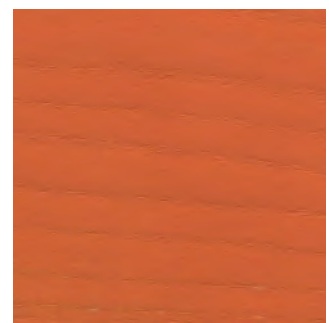
Sage Green Ash  
A-SG



Sun Yellow Ash  
A-SY



Horizon Blue Ash  
A-HB



Mesa Red Ash  
A-MR

## Metal

by BassamFellows



Matte Black  
BP



Satin Nickel  
SN



Satin Brass  
SB



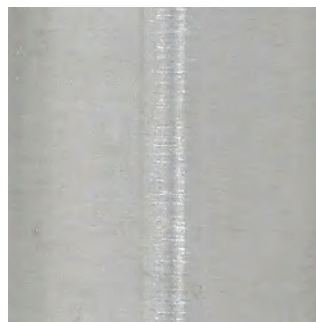
Bronze  
BZ



Gunmetal  
GM



Oxidized Brass  
BR



Stainless Steel  
SS

Nanoceramic coated steel is a more durable and environmentally improved alternative to traditional metal plating where nano particles of metal are mixed with resin and sprayed onto the metal surface versus being placed in a chemical bath.

Additional colors available. Minimum and upcharge may apply.

**Matte Black**  
Powder coated steel

**Satin Nickel**  
Nanoceramic coated steel

**Satin Brass**  
Nanoceramic coated steel

**Bronze**  
Nanoceramic coated steel

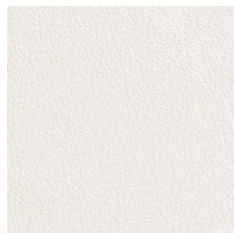
**Gunmetal**  
Nanoceramic coated steel

**Oxidized Brass**  
Hand brushed solid brass

**Stainless Steel**  
Hand brushed stainless steel

## Coach

by BassamFellows



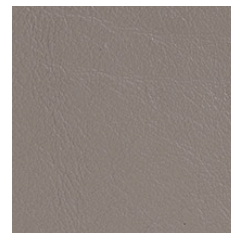
00118 Milk



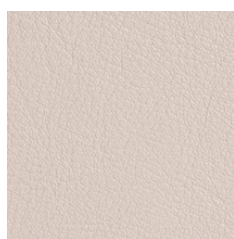
11073 Pale Gray



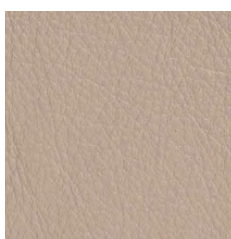
11049 Medium Gray



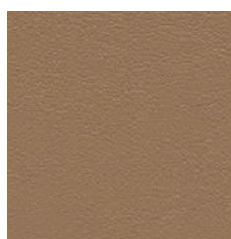
13048 Elephant



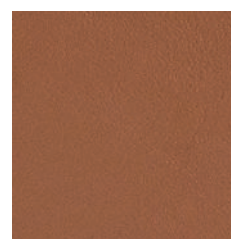
01061 Gray Beige



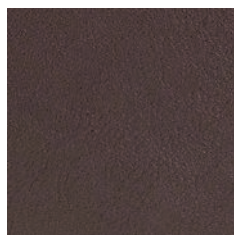
13072 Taupe



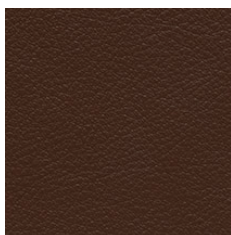
02119 Camel



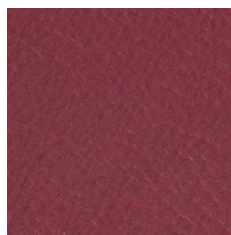
33004 British Tan



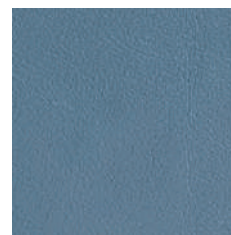
93129 Dark Chocolate



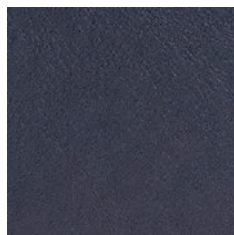
93109 Topaz Brown



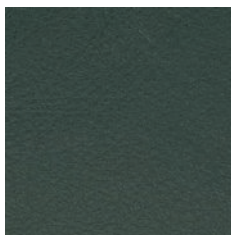
35126 Oxblood



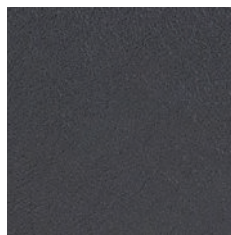
17027 Cadet Blue



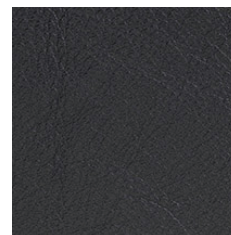
77127 Dark Navy



98015 Dark Green



91102 Anthracite



99999 Black

Coach is a chrome free, soft and pliable semi-aniline leather that offers outstanding comfort combined with excellent durability and is suitable for public environments.

Additional colors available. Minimum and upcharge may apply.

**Raw Material**  
Grain leather from  
Scandinavian cattle

**Finish**  
Semi-Aniline leather

**Price Grade**  
A

## Elegant

by BassamFellows



95947 Oxblood



11038 Platinum Gray



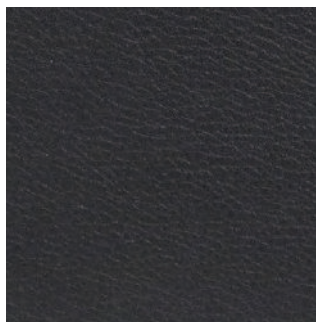
43024 Camel



43807 British Tan



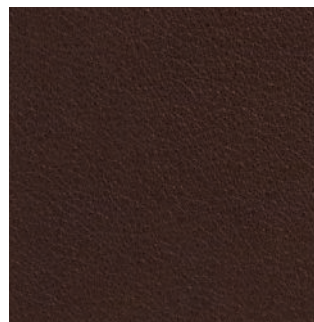
48027 Olive



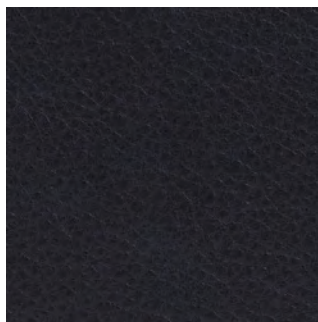
91059 Anthracite



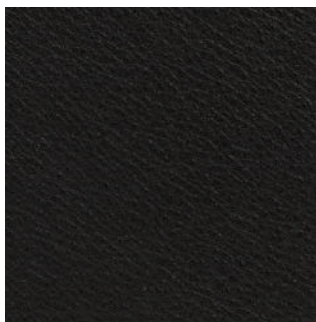
93718 Dark Cognac



93957 Dark Brown



97026 Dark Navy



99001 Black

Elegant grain leather is aniline-dyed with a batique-effect that displays the natural character of the original Scandinavian cattle hide.

Additional colors available. Minimum and upcharge may apply.

**Raw Material**  
Grain leather from  
Scandinavian cattle

**Finish**  
Pure aniline leather

**Price Grade**  
A

## Comfort

by BassamFellows



02067 Beige



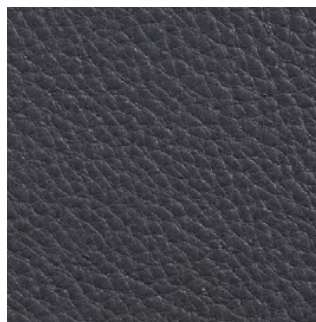
12114 Gray Beige



33286 Chestnut Brown



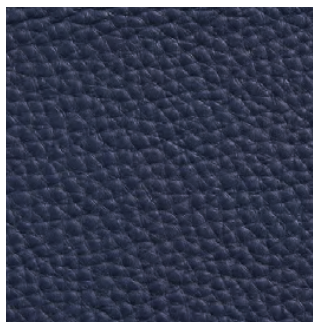
43632 Camel



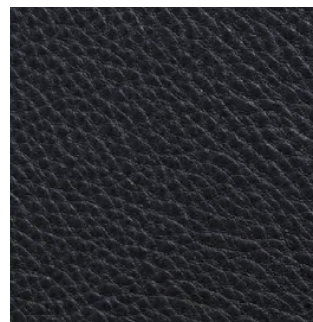
91089 Anthracite



93287 Chocolate



97054 Navy



99991 Black

Like the name suggests, Comfort is a soft aniline leather that showcases a varied grain and the distinct features of the natural hide.

Additional colors available. Minimum and upcharge may apply.

**Raw Material**  
Grain leather from  
Scandinavian cattle

**Finish**  
Pure aniline leather

**Price Grade**  
B