



**Kent Cocktail Table**

*by* DE LA VEGA

*Contemporary*

United States

Symmetry and classic lines anchor a living space while mixed materials create an airiness to a substantial piece.

TCK-DLV-KENT-TBL



KENT COCKTAIL TABLE

# COUP D'ETAT

---

ITEM NO.

DIMENSIONS

---

TCK-DLV-KENT-TBL

30" W x 48" D x 20" H

---

WOOD OPTIONS:

Wenge  
Walnut  
Oak  
Oxidized Maple  
Ebonized Ash

EGGSHELL OPTIONS:

Espresso Premium\*  
Jade Premium\*  
Black Premium\*

METAL OPTIONS:

Satin Brass  
Satin Nickel  
Antique Bronze  
Gunmetal  
Oiled-Rubbed Bronze

ADDITIONAL:

Casters are for  
decorative use only.  
Price upon request.

GLASS OPTIONS:

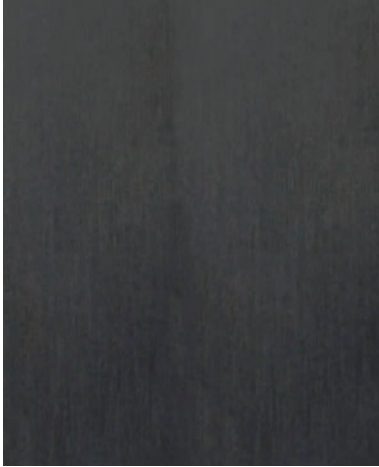
Bronze  
Grey  
Clear

CORIAN OPTIONS:

Black  
White



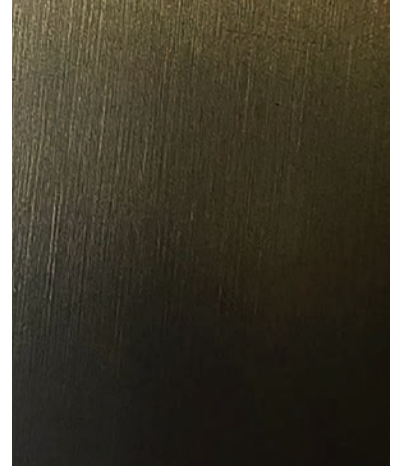
Metal for Kent  
by DE LA VEGA



Gunmetal



Antique Bronze



Oiled-Rubbed Bronze



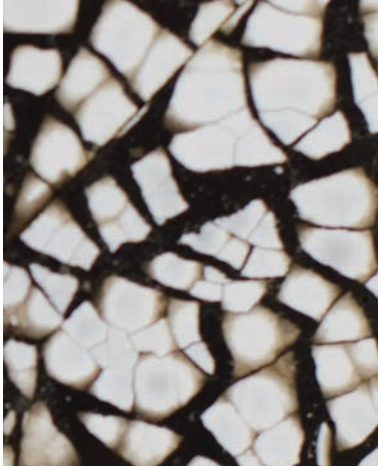
Satin Brass



Satin Nickel

## Eggshell

by DE LA VEGA



Eggshell in Espresso



Eggshell in Jade



Eggshell in Black

## COQUILLE D'OEUF

An old-world Vietnamese lacquer technique used to create delicate and unique surfaces. Before there was a white pigment for lacquer, artisans would use bits of duck or chicken egg embedded by hand into the surface.

Glass for Kent  
by DE LA VEGA



Bronze



Grey



Clear

Corian

# COUP D'ETAT

---

Corian for Kent  
by DE LA VEGA



Black



White