

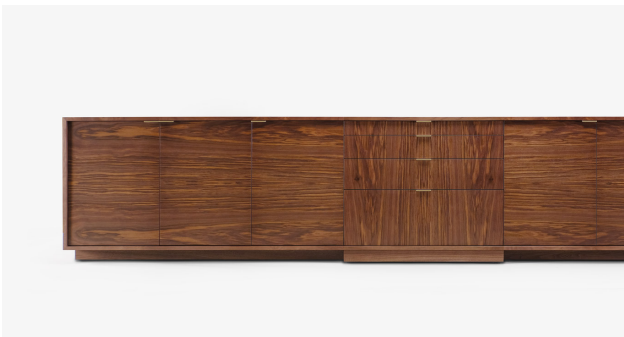
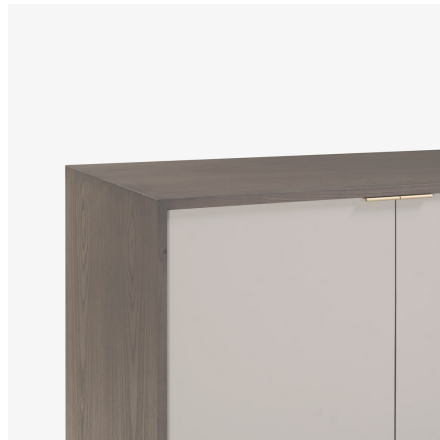
skram

COUPDETATSF.COM



lineground media system

L41



The L41 lineground media system joins the family of servers and media units as a large, highly customizable cabinet well-suited to an array of settings from the living room to the boardroom. Configured as standard, the L41 offers a centered bank of graduated drawers in maple timber with cork-lined bottoms, soft-closing concealed runners, and low-profile tab pulls. Doors flank the drawers and are side hinged. Cabinet areas have adjustable shelving and may optionally be outfitted with pull-out drawers. Door and drawer faces are to match, with leather overlays, or opaque colors. Connectivity, wire management, and ventilation are available for technology integration. Custom sizes, configurations, and materials are available. Residential or contract use.

skram

L41 width 150 / 381 depth 20 / 51 height 30 / 76

Veneer



WA-N: White
Ash, Natural



RWO-N: Rift
White Oak,
Natural



F-WAL: Walnut,
Figured



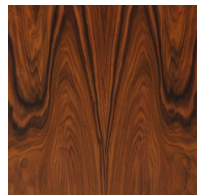
WA-E: White
Ash, Ebonized



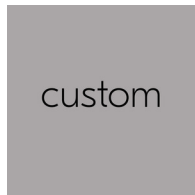
WA-G: White
Ash, Grey



WA-WW: White
Ash,
Whitewashed



SR: Santos
Rosewood, Oiled
and Waxed



custom

Custom

Metal

skram

Metal

Natural



SS4: Brushed
Stainless Steel



GML: Gunmetal



DRB: Dark
Rubbed Bronze



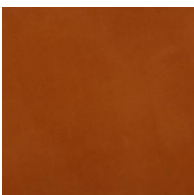
NRB: Natural
Rubbed Bronze

Matte Opaques

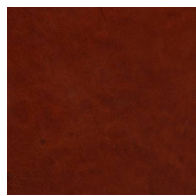


MOB: Matte
Opaque Black

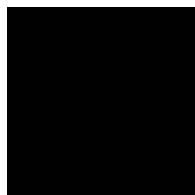
Leather



CL-TN-H: Tan



CL-CNT-H:
Chestnut



CL-BLK-H: Black