



CB-25 Mantis Chair in Ebonized Ash

Mantis Chair by BassamFellows

Contemporary
Italy

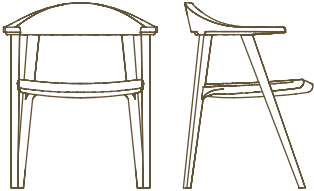
Inspired by the noble praying mantis, the signature stance and powerful limbs of this chair offers a study in contrasts. Strong and elegant, sharp and curved, thick and thin — the Mantis is sturdy and solid, yet visually light. Designer Craig Bassam conceived the chair to be a new American classic, an object that possessed measurable gravitas and wasn't overly indebted to the classic dining chairs associated with mid-century Europe. From certain angles, the Mantis Chair feels almost like a piece of sculpture. Carved entirely from solid wood, it is a new alternative to the classic and indestructible courthouse chair. Unlike many of its predecessors, however, comfort is at the forefront, with a commodious, ergonomically shaped seat. A hand-stitched leather cushion can be added to amplify both comfort and luxury.

CB-25 Mantis Chair



MANTIS CHAIR

COUP D'ETAT

DESCRIPTION	DIMENSIONS	COM	COL	CODE
	W 25 1/8" D 21" H 30 1/2" SH 17 5/8" AH 26 3/8"			CB-25-A CB-25-O CB-25-W
CB-457 Geometric Daybed				

CB-205 Mantis Chair Cushion		1/2 yd	9 sq ft	CB-205
--------------------------------	--	--------	---------	--------

WOOD TYPES:

Solid Ash (A)
 Solid Oak (O)
 Solid Walnut (W)

WOOD FINISHES:

Ebonized black lacquer on Ash (EB) or bleached, white pigment, matte acrylic on Ash (BL). Raw effect lacquer on Oak (RE). Hand rubbed natural oil on Oak or Walnut (NA), or hand rubbed black oil on Walnut (BO).

TEXTILES:

1 - COM
 Kalista
 Saille

3
 Bellano
 Capri
 Milaner
 Panno di Dolce
 Pristina
 Resca
 Wool Tweed

5
 Allusion
 Staple

LEATHER:

A - COL
 Coach
 Elegant

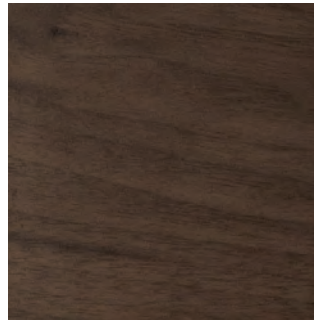
B
 Comfort

Wood

by BassamFellows



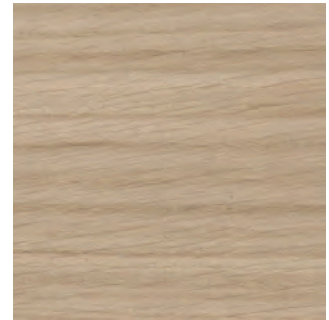
Walnut
W-NA



Walnut Black Oil
W-BO



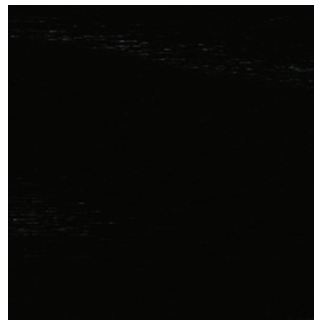
Oak
O-NA



Oak Raw Effect
O-RE



White Ash
A-BL



Ebonized Ash
A-EB



Teak
T-NA



Iroko
I-NA



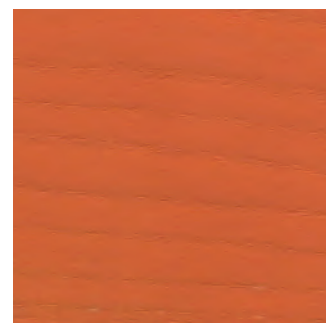
Sage Green Ash
A-SG



Sun Yellow Ash
A-SY



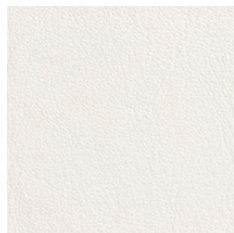
Horizon Blue Ash
A-HB



Mesa Red Ash
A-MR

Coach

by BassamFellows



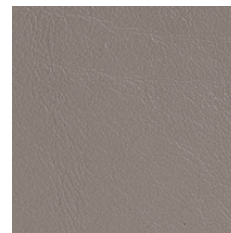
00118 Milk



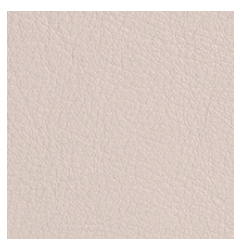
11073 Pale Gray



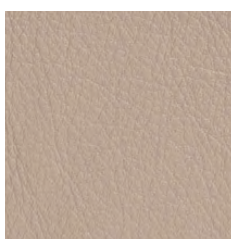
11049 Medium Gray



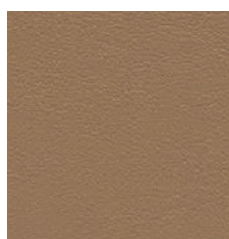
13048 Elephant



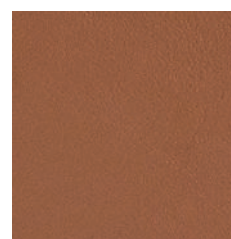
01061 Gray Beige



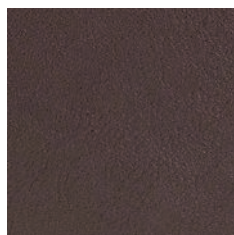
13072 Taupe



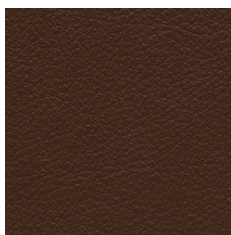
02119 Camel



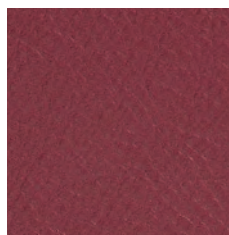
33004 British Tan



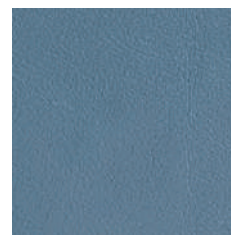
93129 Dark Chocolate



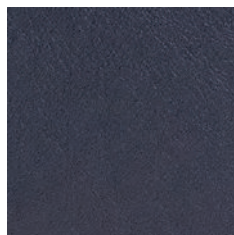
93109 Topaz Brown



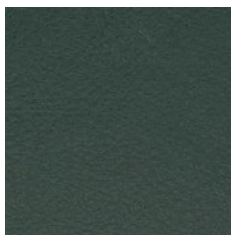
35126 Oxblood



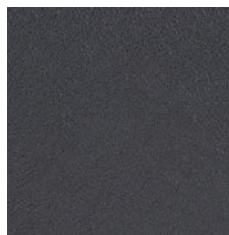
17027 Cadet Blue



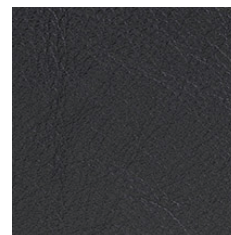
77127 Dark Navy



98015 Dark Green



91102 Anthracite



99999 Black

Coach is a chrome free, soft and pliable semi-aniline leather that offers outstanding comfort combined with excellent durability and is suitable for public environments.

Additional colors available. Minimum and upcharge may apply.

Raw Material
Grain leather from
Scandinavian cattle

Finish
Semi-Aniline leather

Price Grade
A

Comfort

by BassamFellows



02067 Beige



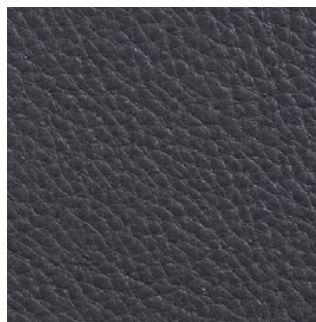
12114 Gray Beige



33286 Chestnut Brown



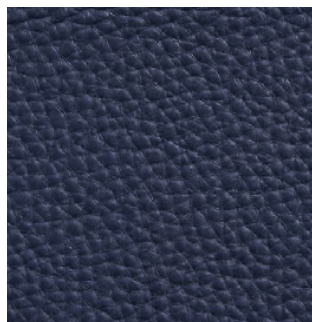
43632 Camel



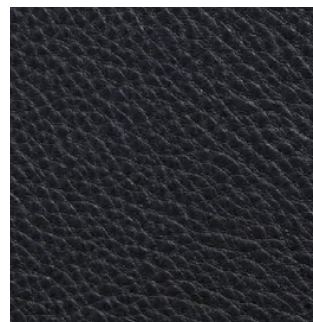
91089 Anthracite



93287 Chocolate



97054 Navy



99991 Black

Like the name suggests, Comfort is a soft aniline leather that showcases a varied grain and the distinct features of the natural hide.

Additional colors available. Minimum and upcharge may apply.

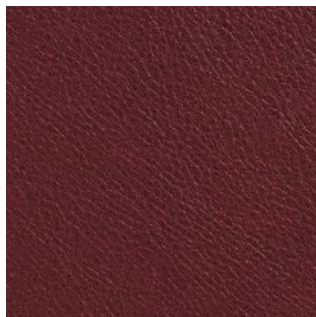
Raw Material
Grain leather from
Scandinavian cattle

Finish
Pure aniline leather

Price Grade
B

Elegant

by BassamFellows



95947 Oxblood



11038 Platinum Gray



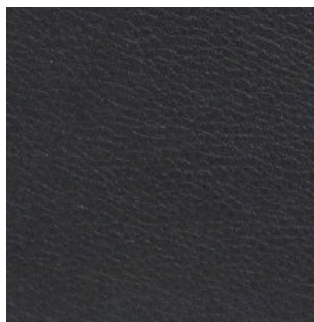
43024 Camel



43807 British Tan



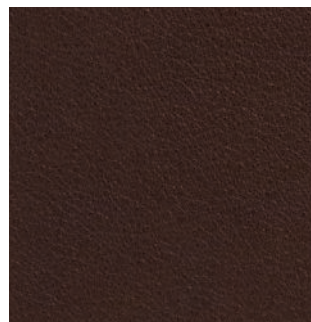
48027 Olive



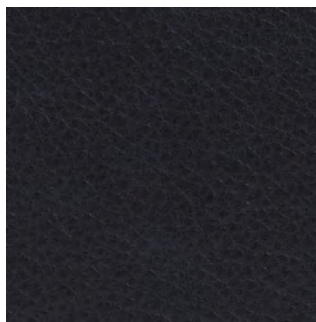
91059 Anthracite



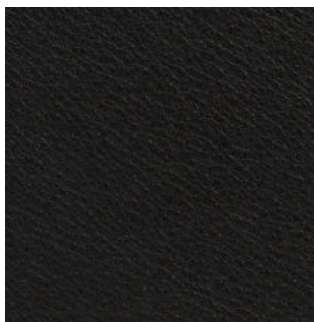
93718 Dark Cognac



93957 Dark Brown



97026 Dark Navy



99001 Black

Elegant grain leather is aniline-dyed with a batique-effect that displays the natural character of the original Scandinavian cattle hide.

Additional colors available. Minimum and upcharge may apply.

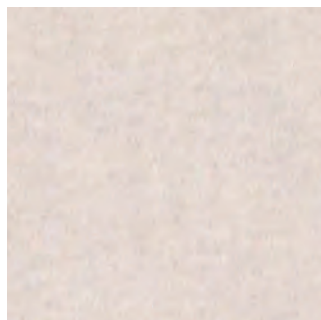
Raw Material
Grain leather from
Scandinavian cattle

Finish
Pure aniline leather

Price Grade
A

Allusion

by BassamFellows



1GS01 Moonlight



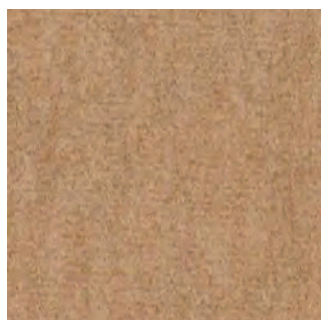
1GS02 Pearl Gray



1GS03 Platinum



1GS04 Smoky Taupe



1GS05 Camel



1GS07 Chestnut Brown



1GS11 Sterling



1GS12 Anthracite

An opulent alpaca velvet, Allusion has subtle shade variation in the dense, non-directional pile, featuring a special finish for exceptional wearability.

Additional colors available. Minimum and upcharge may apply.

Content
60% Alpaca,
27% Wool,
13% Nylon

Width
56"

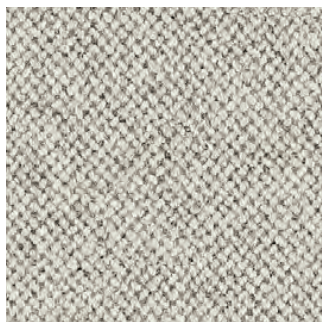
Price Grade
5

Bellano

by BassamFellows



1AX01 Pearl



1AX02 Fog



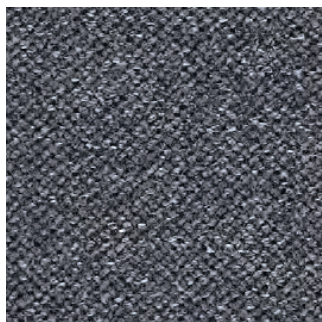
1AX03 Fawn



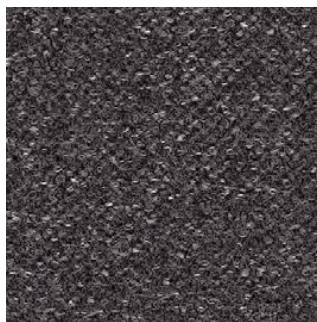
1AX04 Pumice



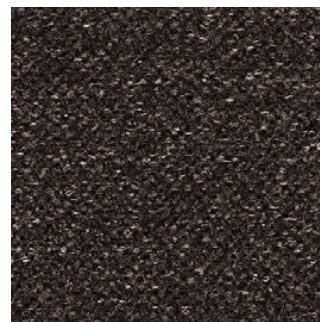
1AX05 Pewter



1AX06 Atlantic



1AX10 Charcoal



1AX11 Umber

A blending of natural fibers—wool, linen and alpaca— gives Bellano a slight sheen and luxurious texture.

Additional colors available. Minimum and upcharge may apply.

Content

75% Wool, 10% Linen,
8% Nylon, 7% Alpaca

Width

55"

Price Grade

3

Capri

by BassamFellows



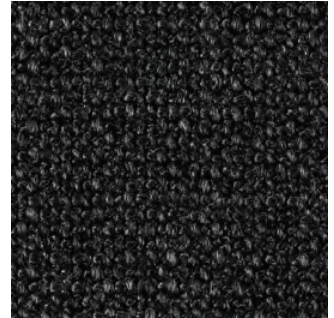
17201 Snow



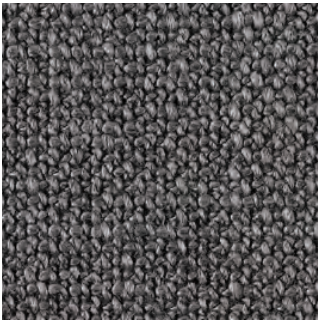
17202 Stone



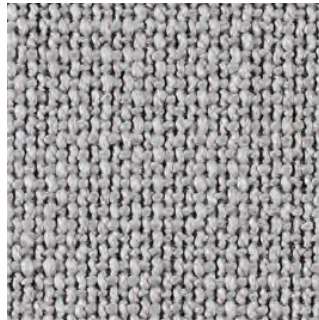
17203 Trench



17204 Graphite



17205 Anthracite



17206 Light Silver

A soft, highly textural fabric, Capri is woven using a combination of irregular heavy yarns and refined, tightly spun cotton yarns, giving it a multidimensional appearance appropriate in any climate.

Additional colors available. Minimum and upcharge may apply.

Content

36% Cotton, 32% Acrylic,
24% Rayon, 8% Polyester

Finish

PFOA-Free
Stain Resistant

Width

55"

Price Grade

3

Kalista

by BassamFellows



1AL02 Natural



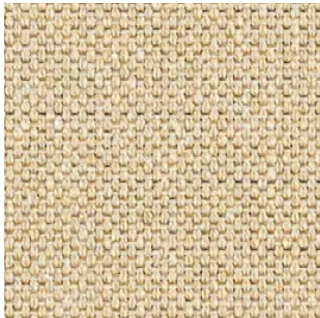
1AL03 Titanium



1AL04 Pewter



1AL05 Starry Night



1AL08 Dune



1AL10 Bluestone



1AL12 Night Sky

Woven using recycled cotton from the apparel industry, Kalista is a plain weave using space-dyed yarns to create a slightly varied, striated appearance in this classic fabric.

Additional colors available. Minimum and upcharge may apply.

Content

71% Post-Industrial
Recycled Cotton,
18% Post-Industrial
Recycled Polyester,
11% Polyester

Finish

PFOA-Free
Stain Resistant

Width

54"

Price Grade

1

Milaner

by BassamFellows



17103 Bark



17104 Deep Navy



17105 Charcoal



17106 Medium Gray



17107 Ash



17108 Crimson

Reminiscent of fine suiting fabric, Milaner uses a mixture of yarns and a mélange of fibers to create a heathered texture with a subtle check.

Additional colors available. Minimum and upcharge may apply.

Content

56% Wool, 10% Acrylic,
10% Alpaca, 10% Cotton,
8% Nylon, 6% Rayon

Width

55"

Price Grade

3

Panno di Dolce
by BassamFellows



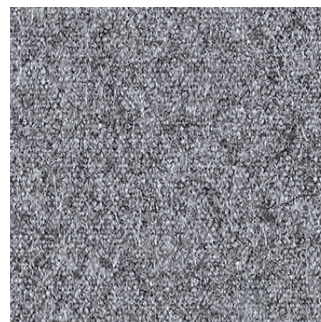
1AV01 Fog



1AV02 Dune



1AV03 Trench



1AV04 Flannel



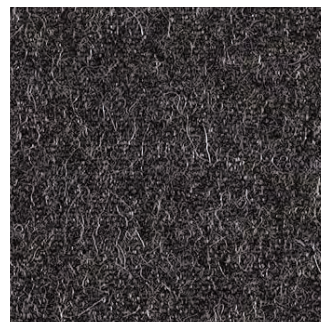
1AV05 Charcoal



1AV06 Umber



1AV07 Deep Navy



1AV08 Graphite

A classic textile, Panno di Dolce mixes a combination of yarns to achieve a refined heathered wool flannel appearance.

Additional colors available. Minimum and upcharge may apply.

Content
65% Wool, 20% Nylon,
15% Alpaca

Width
55"

Price Grade
3

Pristina

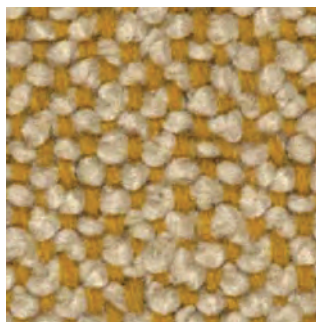
by BassamFellows



1JC01 Dove



1JC02 Goldstone



1JC03 Daybreak



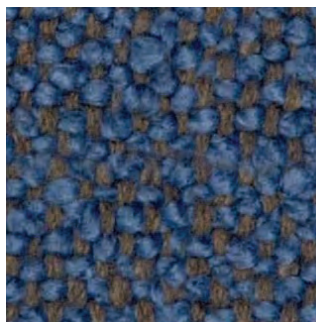
1JC04 Pumice



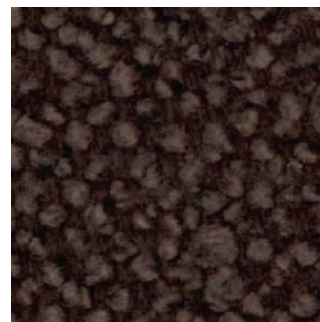
1JC05 Cappuccino



1JC06 Gunmetal



1JC07 Caspian



1JC08 Café Noir

Pristina is a two-toned classic wool bouclé that takes inspiration from the highly tactile upholstery made famous in mid-century design.

Content

37% Wool, 25% Viscose,
17% Acrylic, 15% Cotton,
6% Polyester

Finish

PFOA-Free Stain Resistant

Width

54"

Price Grade

3

Resca

by BassamFellows



1AW01 Fog



1AW02 Dune



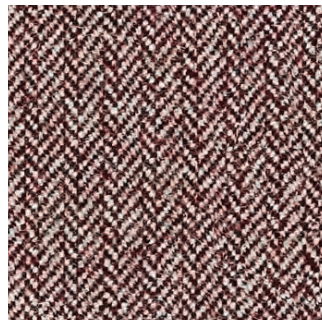
1AW03 Trench



1AW04 Flannel



1AW05 Umber



1AW06 Bordeaux

A subtle nod to menswear, Resca uses light and dark woolen yarns to create an updated small-scale asymmetrical herringbone.

Content

75% Wool, 10% Linen,
8% Nylon, 7% Alpaca

Width

56"

Price Grade

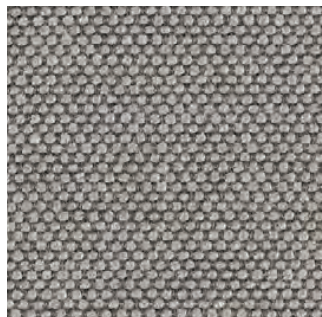
3

Saille

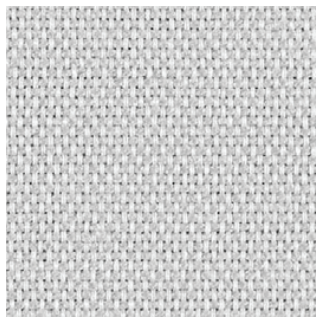
by BassamFellows



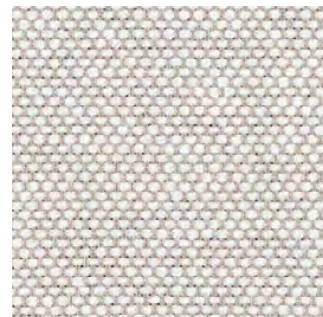
18001 Coal



18002 Shale



18003 Haze



18004 Stone



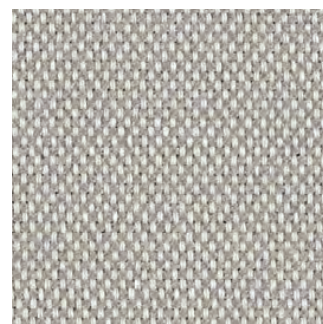
18005 White



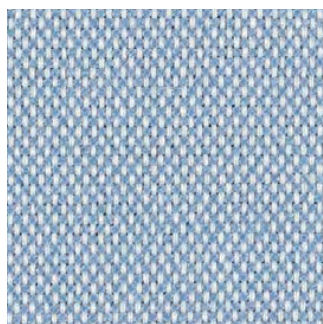
18006 Beach



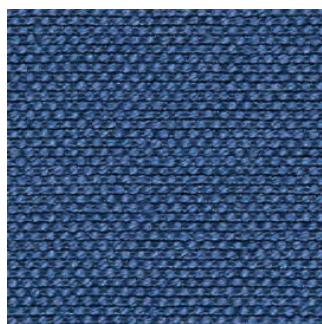
18007 Sand



18010 Fog



18013 Summer Sky



18014 Lake



18015 Midnight Blue

A versatile foundational textile, Saille is a uniform plain weave using two yarn colors to create the effect of a classic canvas sailcloth.

Additional colors available. Minimum and upcharge may apply.

Content
69% Cotton,
31% Polyester

Finish
PFOA-Free
Stain Resistant

Width
57"

Price Grade
1

Staple

by BassamFellows



16101 Light Native Umber



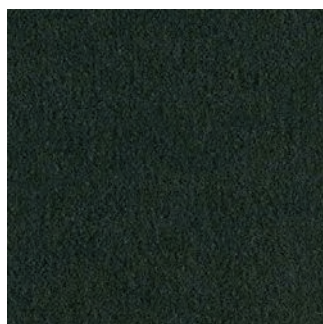
16103 Pearl Gray



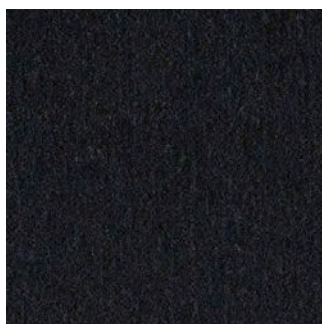
16104 Light Gray



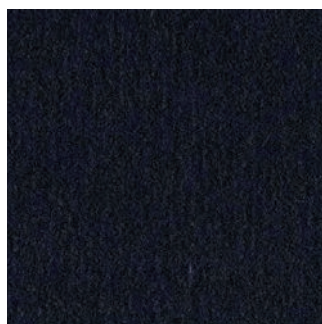
16105 Ferric Gray



16106 Black Green



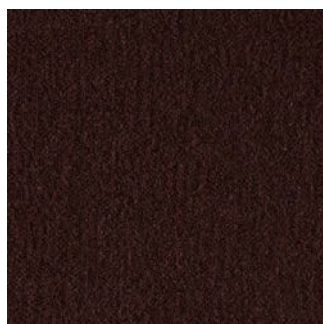
16107 Prussian Blue



16108 Navy



16110 Chestnut Brown



16111 Ruby Red

Staple is classic wool velvet, with a dense, non-directional pile, giving it a matte appearance and high durability.

Additional colors available. Minimum and upcharge may apply.

Content
100% Wool

Width
54"

Price Grade
5

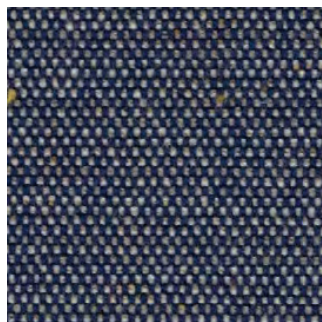
Wool Tweed
by BassamFellows



16601 Trench



16602 Pewter



16605 Navy



16606 Umber



16607 Charcoal

Made in New Zealand from ultra-soft, locally sourced wool, this multicolored woolen fabric is reminiscent of Donegal tweed, characterized by bright flecks of color randomly woven throughout.

Additional colors available. Minimum and upcharge may apply.

Content
80% Wool,
20% Nylon

Width
54"

Price Grade
3