



CB-58 Pipe Armless Chair in Walnut

Pipe Chair

by BassamFellows

Contemporary

Italy

The BassamFellows Pipe Chair has the striking silhouette and strength of an A-frame stance. The tubular stainless-steel structure holds solid wood seat and back panels that are carved in two directions. From the perspective of the sitter, the seat and back panels have carved, softened edges and are dished for ergonomic comfort while underneath, the panels are carved to integrate with the frame, melding two materials together – structure and wood. Originally the design brief required the chair to be stackable and appropriate for both indoor and outdoor use. The chair is stackable, limited to four high, and is available in outdoor versions in appropriate woods such as Teak or Iroko.

CB-58 Pipe Armless Chair

CB-580 Pipe Armchair



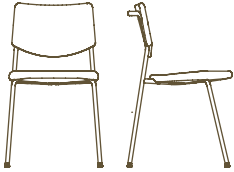
COUP D'ETAT

PIPE CHAIR

DESCRIPTION

DIMENSIONS

CODE

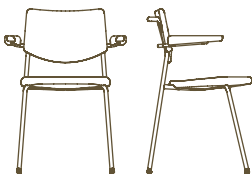


W 20 3/4"
D 21 7/8"
H 30 5/8"
SH 17 7/8"

CB-58-O-SS
CB-58-O-SS-NANO
CB-58-W-SS
CB-58-W-SS-NANO

CB-58

Pipe Armless Chair



W 25 7/8"
D 21 7/8"
H 30 5/8"
SH 17 7/8"
AH 25 1/2"

CB-580-O-SS
CB-580-O-SS-NANO
CB-580-W-SS
CB-580-W-SS-NANO

CB-580

Pipe Armchair

WOOD TYPES:

Solid Oak (O)
Solid Walnut (W)

WOOD FINISHES:

Ebonized black lacquer on Oak (EB). Raw effect lacquer on Oak (RE). Hand rubbed natural oil on Oak or Walnut (NA), or hand rubbed black oil on Walnut (BO).

METAL FINISHES:

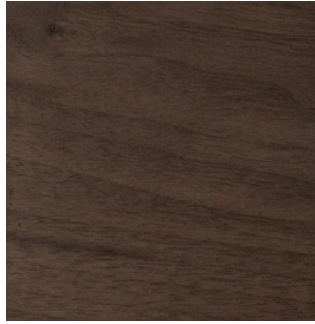
Tubular stainless steel (SS) or tubular Stainless Steel with Smoke Powder coat finish (SP) included in base price, or Satin Nickel (SN), Satin Brass (SB), Bronze (BZ), Gunmetal (GM), or Custom Metal (CM) nanoceramic coated tubular Stainless Steel.

Wood

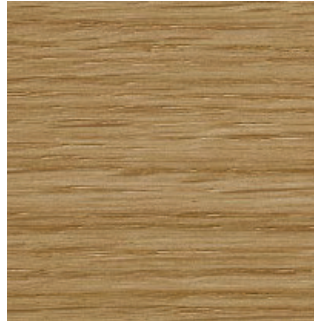
by BassamFellows



Walnut
W-NA



Walnut Black Oil
W-BO



Oak
O-NA



Oak Raw Effect
O-RE



White Ash
A-BL



Ebonized Ash
A-EB



Teak
T-NA



Iroko
I-NA



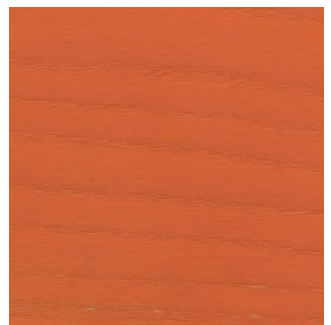
Sage Green Ash
A-SG



Sun Yellow Ash
A-SY



Horizon Blue Ash
A-HB



Mesa Red Ash
A-MR

Metal

by BassamFellows



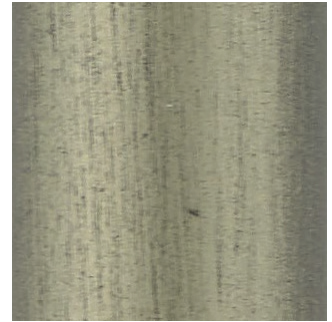
Matte Black
BP



Satin Nickel
SN



Satin Brass
SB



Bronze
BZ



Gunmetal
GM



Oxidized Brass
BR



Stainless Steel
SS

Nanoceramic coated steel is a more durable and environmentally improved alternative to traditional metal plating where nano particles of metal are mixed with resin and sprayed onto the metal surface versus being placed in a chemical bath.

Additional colors available. Minimum and upcharge may apply.

Matte Black
Powder coated steel

Satin Nickel
Nanoceramic coated steel

Satin Brass
Nanoceramic coated steel

Bronze
Nanoceramic coated steel

Gunmetal
Nanoceramic coated steel

Oxidized Brass
Hand brushed solid brass

Stainless Steel
Hand brushed stainless steel