



CB-585 Pipe Lounge Armchair in Oak

## Pipe Lounge Chair

by BassamFellows

*Contemporary*

Italy

The BassamFellows Pipe Chair has the striking silhouette and strength of an A-frame stance. The tubular stainless-steel structure holds solid wood seat and back panels that are carved in two directions. From the perspective of the sitter, the seat and back panels have carved, softened edges and are dished for ergonomic comfort while underneath, the panels are carved to integrate with the frame, melding two materials together – structure and wood. Originally the design brief required the chair to be stackable and appropriate for both indoor and outdoor use. The chair is stackable, limited to four high, and is available in outdoor versions in appropriate woods such as Teak or Iroko.

CB-584 Pipe Lounge Chair

CB-585 Pipe Lounge Armchair



# COUP D'ETAT

## PIPE LOUNGE CHAIR

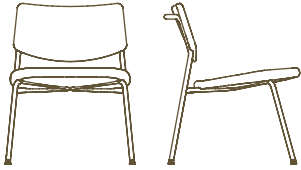
---

### DESCRIPTION

### DIMENSIONS

### CODE

---



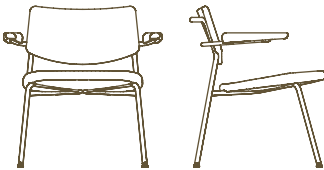
W 21 3/8"  
D 24 1/8"  
H 27 3/4"  
SH 16 5/8"

CB-584-O-SS  
CB-584-O-SSNANO  
CB-584-W-SS  
CB-584-W-SS-NANO

**CB-584**

Pipe Armless Lounge Chair

---



W 28 1/4"  
D 24 1/8"  
H 27 3/4"  
SH 16 5/8"  
AH 23 1/8"

CB-585-O-SS  
CB-585-O-SS-NANO  
CB-585-W-SS  
CB-585-W-SS-NANO

**CB-585**

Pipe Lounge Armchair

---

### WOOD TYPES:

Solid Oak (O)  
Solid Walnut (W)

### WOOD FINISHES:

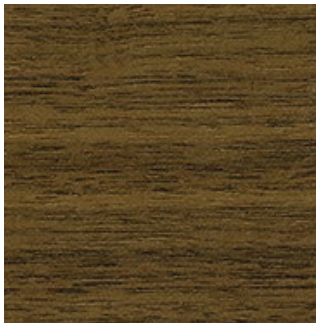
Ebonized black lacquer on Oak (EB). Raw effect lacquer on Oak (RE). Hand rubbed natural oil on Oak or Walnut (NA), or hand rubbed black oil on Walnut (BO).

### METAL FINISHES:

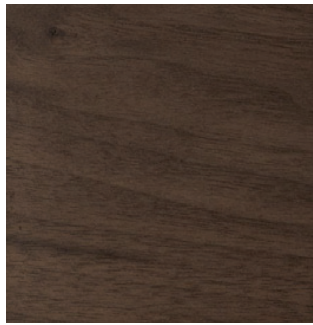
Tubular Stainless Steel (SS) or tubular Stainless Steel with Smoke Powder coat finish (SP) included in base price, or Satin Nickel (SN), Satin Brass (SB), Bronze (BZ), Gunmetal (GM), or Custom Metal (CM) nanoceramic coated tubular Stainless Steel.

Wood

by BassamFellows



Walnut  
W-NA



Walnut Black Oil  
W-BO



Oak  
O-NA



Oak Raw Effect  
O-RE



White Ash  
A-BL



Ebonized Ash  
A-EB



Teak  
T-NA



Iroko  
I-NA



Sage Green Ash  
A-SG



Sun Yellow Ash  
A-SY



Horizon Blue Ash  
A-HB



Mesa Red Ash  
A-MR

## Metal

by BassamFellows



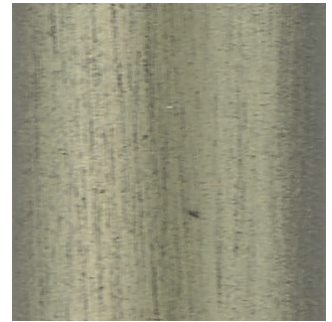
Matte Black  
BP



Satin Nickel  
SN



Satin Brass  
SB



Bronze  
BZ



Gunmetal  
GM



Oxidized Brass  
BR



Stainless Steel  
SS

Nanoceramic coated steel is a more durable and environmentally improved alternative to traditional metal plating where nano particles of metal are mixed with resin and sprayed onto the metal surface versus being placed in a chemical bath.

Additional colors available. Minimum and upcharge may apply.

**Matte Black**  
Powder coated steel

**Satin Nickel**  
Nanoceramic coated steel

**Satin Brass**  
Nanoceramic coated steel

**Bronze**  
Nanoceramic coated steel

**Gunmetal**  
Nanoceramic coated steel

**Oxidized Brass**  
Hand brushed solid brass

**Stainless Steel**  
Hand brushed stainless steel