



CB-335-274 Plank Dining Table in solid Walnut

## Plank Table

by BassamFellows

*Contemporary*

United States

BassamFellows introduced the Plank Table Collection as a response to a design challenge: how to make an incredibly lightweight table that would appear to almost defy gravity? Like some of the best modern architecture, the Plank Table challenges typical notions of structure, often inviting puzzled looks from those who wonder how it is able to hover so effortlessly. The table's innovative design formula uses a triangular structure that is independent of the rectangular geometry of the top, the Plank Table's legs are thus minimized and the structural span is maximized. The result is a three-legged table with triangular cantilevers at each end, creating the illusion of a floating surface. Larger tables link two triangular structures back-to-back to form a zigzag pattern with four legs, achieving spans of up to 9 feet – the lightest possible visual to contrast the mass of the beautifully crafted solid wood plank top (some tables available with glass tops).

|            |                           |
|------------|---------------------------|
| CB-331     | Plank Table               |
| CB-334-210 | Plank Dining Table Short  |
| CB-335-240 | Plank Dining Table Medium |
| CB-335-274 | Plank Dining Table Long   |



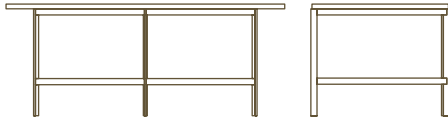
PLANK TABLES

# COUP D'ETAT

DESCRIPTION

DIMENSIONS

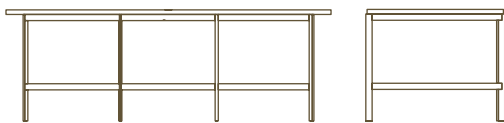
CODE



W 70 7/8"  
D 35 3/8"  
H 28 3/8"  
T 1 1/4"

CB-331-A  
CB-331-O  
CB-331-W

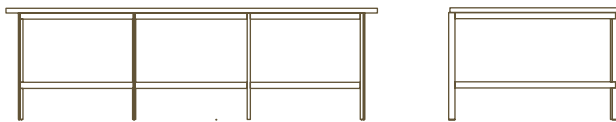
CB-311  
Plank Table



W 82 5/8"  
D 35 3/8"  
H 28 3/8"  
T 1 1/4"

CB-334-210-A  
CB-334-210-O  
CB-334-210-W

CB-334-210  
Plank Dining Table Short



W 94 1/2"  
D 42 1/2"  
H 28 3/8"  
T 1 1/4"

CB-335-240-A  
CB-335-240-O  
CB-335-240-W

CB-335-240  
Plank Dining Table Medium



W 107 7/8"  
D 42 1/2"  
H 28 3/8"  
T 1 1/4"

CB-335-274-A  
CB-335-274-O  
CB-335-274-W

CB-335-274  
Plank Dining Table Long

WOOD TYPES:

Solid Ash (A)  
Solid Oak (O)  
Solid Walnut (W)

WOOD FINISHES:

Ebonized black lacquer on Ash (EB) or bleached, white pigment, matte acrylic on Ash (BL). Raw effect lacquer on Oak (RE). Hand rubbed penetrating polyurethane on Oak or Walnut (NA), or hand rubbed black oil on Walnut (BO).

METAL FINISHES:

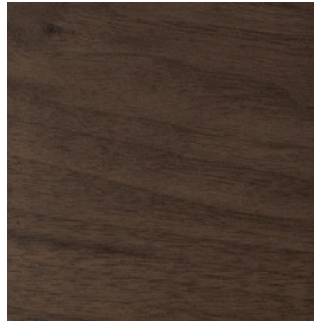
Oxidized brass (BR) or stainless steel (SS) cold rolled true bar triangular frame.

Wood

by BassamFellows



Walnut  
W-NA



Walnut Black Oil  
W-BO



Oak  
O-NA



Oak Raw Effect  
O-RE



White Ash  
A-BL



Ebonized Ash  
A-EB



Teak  
T-NA



Iroko  
I-NA



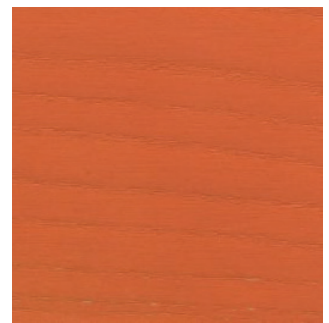
Sage Green Ash  
A-SG



Sun Yellow Ash  
A-SY



Horizon Blue Ash  
A-HB



Mesa Red Ash  
A-MR

## Metal

by BassamFellows



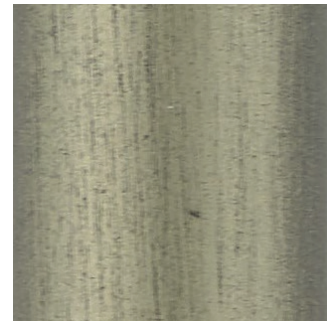
Matte Black  
BP



Satin Nickel  
SN



Satin Brass  
SB



Bronze  
BZ



Gunmetal  
GM



Oxidized Brass  
BR



Stainless Steel  
SS

Nanoceramic coated steel is a more durable and environmentally improved alternative to traditional metal plating where nano particles of metal are mixed with resin and sprayed onto the metal surface versus being placed in a chemical bath .

Additional colors available. Minimum and upcharge may apply.

**Matte Black**  
Powder coated steel

**Satin Nickel**  
Nanoceramic coated steel

**Satin Brass**  
Nanoceramic coated steel

**Bronze**  
Nanoceramic coated steel

**Gunmetal**  
Nanoceramic coated steel

**Oxidized Brass**  
Hand brushed solid brass

**Stainless Steel**  
Hand brushed stainless steel