



Rib Pendant

by **Konekt**

Contemporary

Italy

The Rib Pendants are available in three shapes and ve sizes, designed to stand alone or in various grouped arrangements. Each glass pendant is blown in Italy and delicately framed by thin brass ribs. A cylindrical brass finial, with optional hand-wrapped leather or suede, elongates the pendant and adds a finishing touch of refinement.

The collection continues Konekt's exploration of opposing characteristics — finding contrast and balance between strength and fragility, so curves and sharp lines, adornment and moderation.

Dimensions:

Small Ellipse: 10.25" W x 7.5" H

Large Ellipse: 15.25" W x 11" H

Small Sphere: 8" W x 10" H

Large Sphere: 13.75" W x 16.25" H

Capsule: 9.5" W x 19.5" H

*Drop length cut to order.

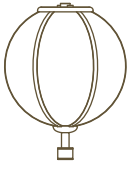
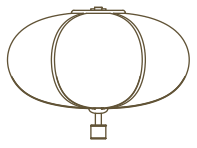
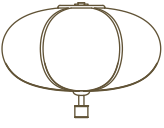
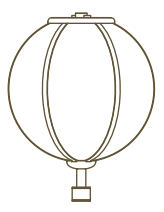
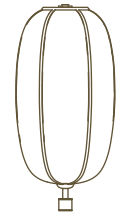
Materials: Glass, Brass and Optional Leather or Suede.

UL listed.



RIB PENDANT

COUP D'ETAT

DESCRIPTION	DIMENSIONS	LAMPING	INCLUSIONS
	<p>Small Ellipse</p> <p>10.25" W x 7.5" H</p> <p>*Drop length cut to order.</p>	E12 120V 60W	3W dimmable LED bulb included 120V; 180 lumens; 2700k
	<p>Large Ellipse</p> <p>15.25" W x 11" H</p> <p>*Drop length cut to order.</p>	E26 120V 60W	3W dimmable LED bulb included 120V; 210 lumens; 2200k
	<p>Small Sphere</p> <p>8" W x 10" H</p> <p>*Drop length cut to order.</p>	E12 120V 60W	3W dimmable LED bulb included 120V; 180 lumens; 2700k
	<p>Large Sphere</p> <p>13.75" W x 16.25" H</p> <p>*Drop length cut to order.</p>	E26 120V 60W	3W dimmable LED bulb included 120V; 210 lumens; 2200k
	<p>Capsule</p> <p>9.5" W x 19.5" H</p> <p>*Drop length cut to order.</p>	E26 120V 60W	3W dimmable LED bulb included 120V; 210 lumens; 2200k

METAL:

Satin Brass
 Antique Brass
 Oil-rubbed Bronze
 Satin Black
 Satin Nickel
 Antique Nickel
 Polished Nickel

LEATHER:

Maroon
 Tan
 Cream
 Fumo
 Mocha
 Dark Olive

SUEDE:

Walnut
 Beige
 Pearl

ADDITIONAL:

UL listed.
 Slope ceiling options available.
 Pricing includes up to 78"H. For longer drop lengths inquire for custom quote.

Metal Finish Options for Rib Collection
by Konekt



Satin Brass



Antique Brass



Oil-Rubbed Bronze



Satin Black



Satin Nickel



Antique Nickel



Polished Nickel

Suede & Leather Options for Rib Collection

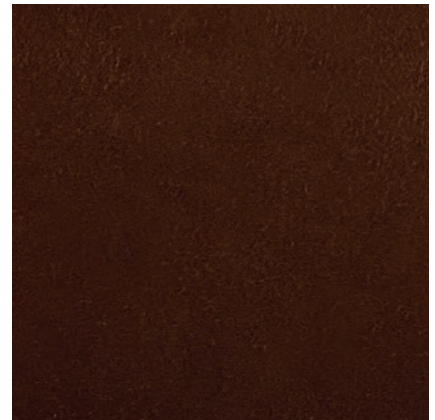
by Konekt



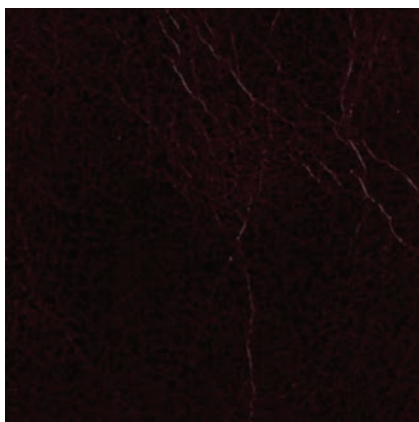
Beige *Suede*



Pearl *Suede*



Walnut *Suede*



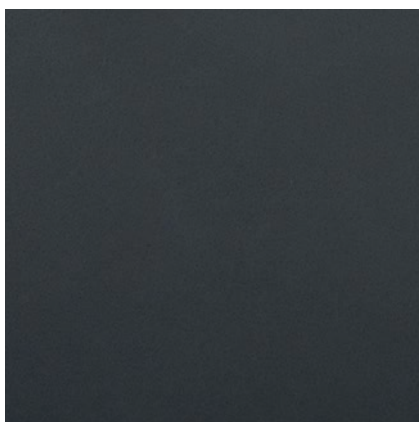
Maroon *Leather (distressed)*



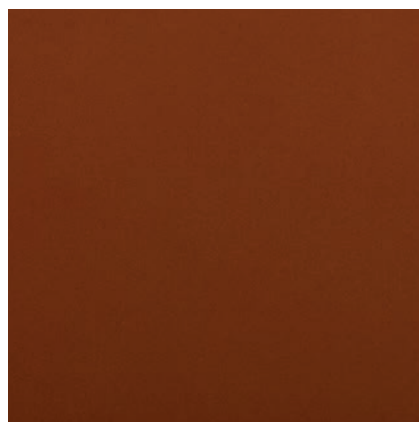
Mocha *Leather*



Dark Olive *Leather*



Fumo *Leather*



Tan *Leather*



Cream *Leather*