



CB-382 Tambour High Credenza in White-Ash

## Tambour Credenza

*by BassamFellows*

*Contemporary*

Italy

Originally designed for use in the BassamFellows design studio, the credenzas are a supremely elegant and sturdy storage system that can be used either at home or in the office.

The credenzas feature horizontally sliding, tambour doors that disappear into the cabinet, revealing a perfect box with adjustable shelving. The gently curved edges of the storage cabinet are solid wood and designed for optimum durability.

By contrast to most traditional storage options, the Credenza Series is as beautiful inside as it is out. The accented shelves offer a sense of hide and reveal.

The credenzas are available in two heights – each designed to be freestanding and viewed in the round. Multiple units can be placed side by side to create an efficient room divider. A wall-hung version works beautifully as a floating buffet in a dining or conference room.

CB-381 Tambour Low Credenza

CB-382 Tambour High Credenza

CB-383 Tambour Wall Hung Credenza



| DESCRIPTION                                 | DIMENSIONS  | CODE   |
|---|---|--------|
| <b>CB-381</b><br>Tambour Low Credenza       | W 65"<br>D 16 1/2"<br>H 28 3/8"<br>ID 13 1/8"     | CB-381 |
| <b>CB-382</b><br>Tambour High Credenza      | W 65"<br>D 16 1/2"<br>H 42"<br>ID 13 1/8"         | CB-382 |
| <b>CB-383</b><br>Tambour Wall Hung Credenza | W 70 7/8"<br>D 17 1/4"<br>H 19 5/8"<br>ID 13 1/8" | CB-383 |

**WOOD TYPES:**

Teak (O)  
 Solid Walnut (W)  
 Ash (A)  
 White Oak (WO)

**WOOD FINISHES:**

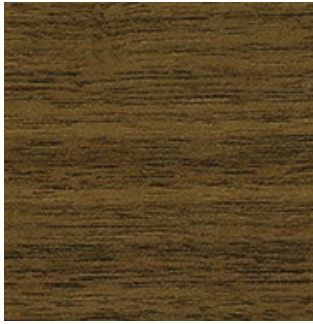
Teak (T), Walnut (W), Ash (A) or White Oak (WO) veneer panels to top and sides with solid edges on all sides

**INTERIOR FINISHES:**

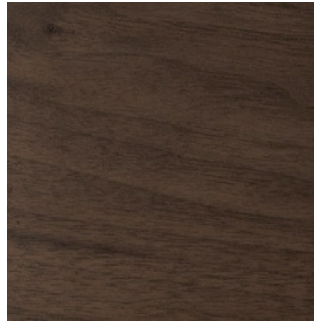
Ash (A) with aniline dye color in Mesa Red (MR), Horizon Blue (HB), Sun Yellow (SW), or Sage Green (SG)

Wood

by BassamFellows



Walnut  
W-NA



Walnut Black Oil  
W-BO



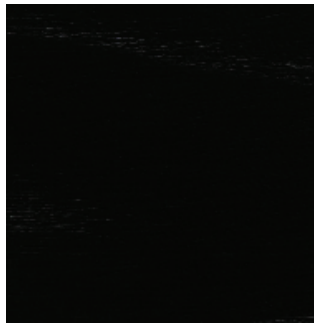
Oak  
O-NA



Oak Raw Effect  
O-RE



White Ash  
A-BL



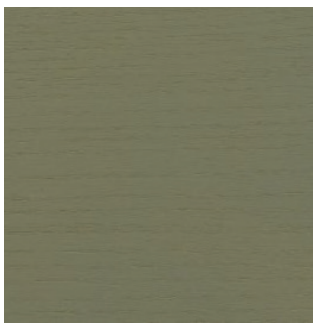
Ebonized Ash  
A-EB



Teak  
T-NA



Iroko  
I-NA



Sage Green Ash  
A-SG



Sun Yellow Ash  
A-SY



Horizon Blue Ash  
A-HB



Mesa Red Ash  
A-MR