

COUP D'ETAT



Teardrop Floor Lamp
by konekt

Contemporary
United States

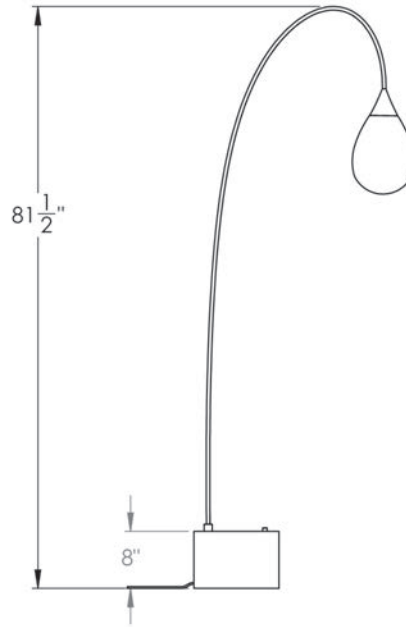
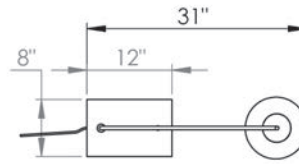
A hand-blown glass pendant hangs from a spun brass cone and an elegant, arcing curve. A rectangular base grounds the lamp, featuring a dimmer knob to control the luminescent glow.

Dimensions: 31"W x 8"D x 81.5"H

Materials: Hand-Blown Glass, Brass and Steel

Glass Color : White or Grey

COUP D'ETAT



Teardrop Floor Lamp by konekt

Contemporary

United States

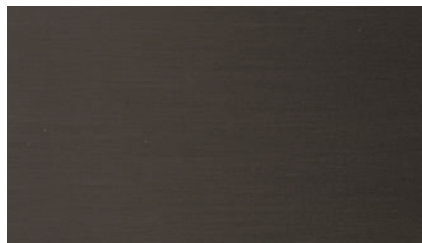
Finish: Antique Brass, Oil-rubbed Bronze, Satin Black, Satin Nickel or Antique Nickel

Lamping: E26 | 120V | 60W
9.5W dimmable LED bulb included 120V;
950 lumens; 2700k color temperature

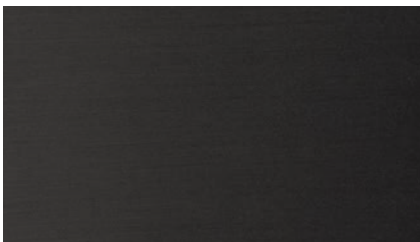
UL listed



Antique Brass



Oil-Rubbed Bronze



Satin Black



Satin Nickel



Antique Nickel