

COUP D'ETAT



Teardrop Pendant Five Cluster - Large **by konekt**

Contemporary

United States

A carefully crafted, hand-blown glass pendant hangs from a spun brass cone for an elongated and elegant teardrop shape. Available in two sizes as a single pendant, a cluster of three or five pendants, or a custom cluster.

Dimensions:

Canopy: 24"D

Overall Diameter: 27 3/8 "D

Overall Drop Length: Up to 78"H*

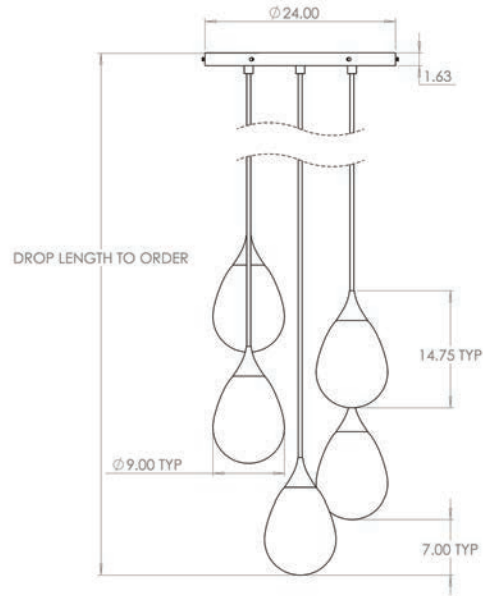
Drop length cut to order.*

Materials: Hand-blown Glass and Brass

Glass Color : White or Grey

111 Rhode Island Street, Suite 1 San Francisco, CA 94103 P. 415 241 9300
100 N Robertson Blvd, Los Angeles, CA 90048 P. 323 825 5880
E. info@coupdetatsf COUPDETATSE.COM

COUP D'ETAT



Teardrop Pendant Five Cluster - Large by konekt

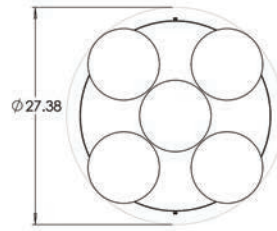
Contemporary

United States

Finish: Satin Brass, Antique Brass*, Oil-rubbed Bronze*,
Satin Black*, Satin Nickel* or Antique Nickel*
(Upcharge for Premium finishes*)

Lamping: E26 | 120V | 60W
9.5W dimmable LED bulb included 120V;
950 lumens; 2700k color temperature

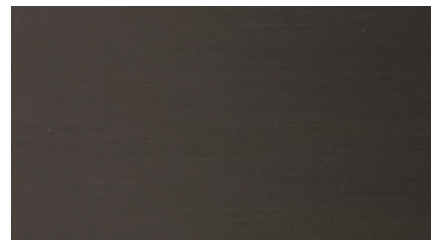
UL listed



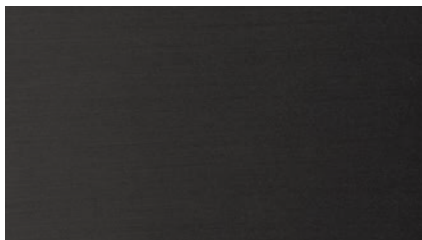
Satin Brass



Antique Brass*



Oil-Rubbed Bronze*



Satin Black*



Satin Nickel*



Antique Nickel*