

# COUP D'ETAT



**Teardrop Pendant Single - Large**  
**by konekt**

*Contemporary*  
United States

A carefully crafted, hand-blown glass pendant hangs from a spun brass cone for an elongated and elegant teardrop shape. Available in two sizes as a single pendant, a cluster of three or five pendants, or a custom cluster.

**Dimensions:**  
Canopy: 5"D  
Pendant: 9"W x 14 3/4"H  
Overall Drop Length: Up to 78"H\*

Drop length cut to order.\*

**Materials:** Hand-blown Glass and Brass

**Glass Color :** White or Grey

# COUP D'ETAT



## Teardrop Pendant Single - Large by konekt

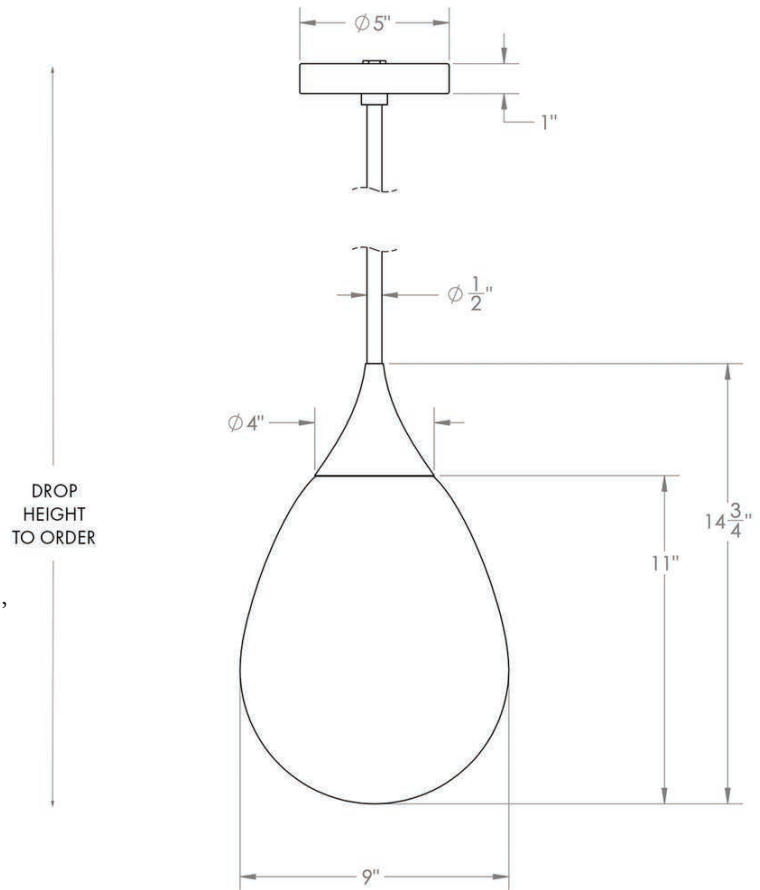
*Contemporary*

United States

**Finish:** Satin Brass, Antique Brass\*, Oil-rubbed Bronze\*,  
Satin Black\*, Satin Nickel\* or Antique Nickel\*  
(Upcharge for Premium finishes\*)

**Lamping:** E26 | 120V | 60W  
9.5W dimmable LED bulb included 120V;  
950 lumens; 2700k color temperature

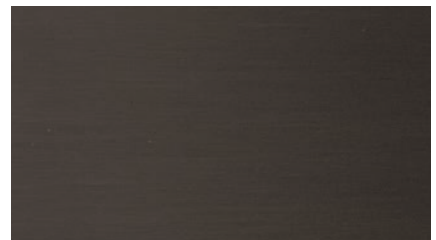
UL listed



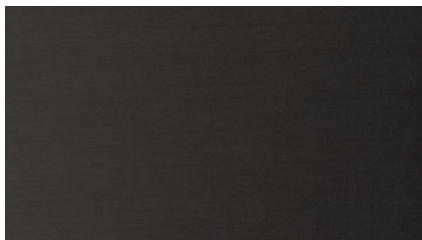
Satin Brass



Antique Brass\*



Oil-Rubbed Bronze\*



Satin Black\*



Satin Nickel\*



Antique Nickel\*