

COUP D'ETAT



Teardrop Sconce
by konekt

Contemporary
United States

A carefully crafted, hand-blown glass pendant hangs from a spun brass cone for an elongated and elegant teardrop shape.

Dimensions: 6"W x 12 1/8"D x 18"H

Materials: Hand-Blown Glass and Brass

Glass Color : White or Grey

COUP D'ETAT



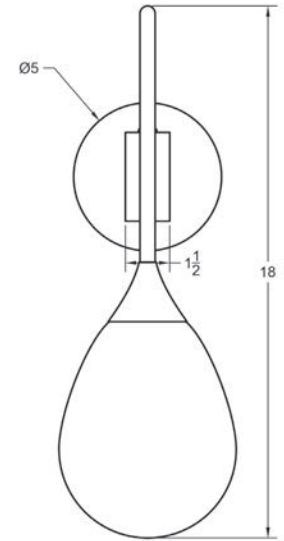
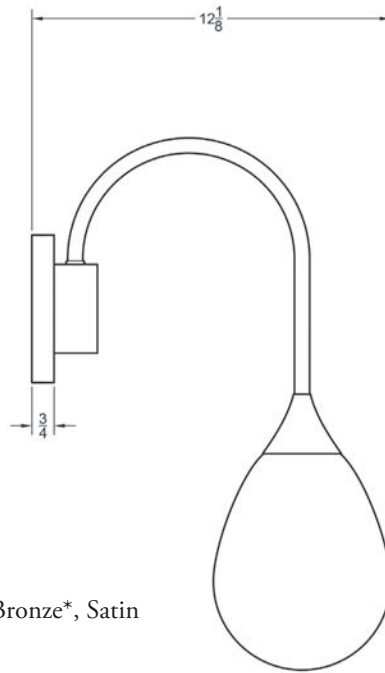
Teardrop Sconce by konekt

Contemporary
United States

Finish: Satin Brass, Antique Brass*, Oil-rubbed Bronze*, Satin Black*, Satin Nickel* or Antique Nickel*
(Upcharge for Premium finishes*)

Lamping: E12 | 120V | 60W
9.5W dimmable LED bulb included
120V; 950 lumens; 2700k color temperature

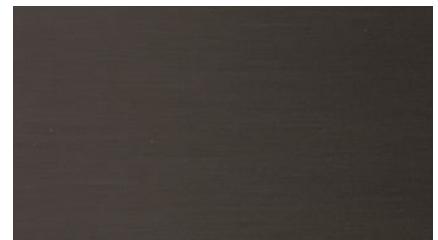
UL listed



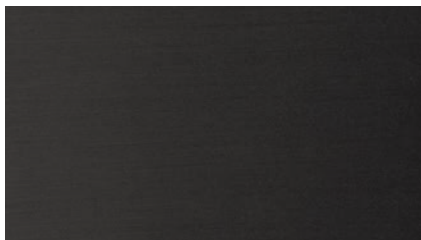
Satin Brass



Antique Brass*



Oil-Rubbed Bronze*



Satin Black*



Satin Nickel*



Antique Nickel*