

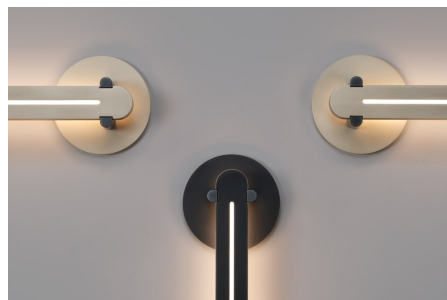
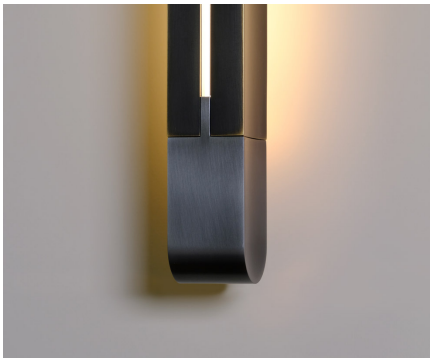
skram

COUPDETATSF.COM



torpedo

T10



Torpedo is a L.E.D driven sconce. The main body is bronze. The end cap and hang bar – with joinery that references the traditional woodworking that defines skram’s products – are gunmetal steel. Light emanates from slots on the front and sides. The rear is fully machined-out and diffused, resulting in the soft illumination of the wall. Premium quality, high-efficiency L.E.D. light engines provide outstanding quality and output. All skram lighting products rate at 90+ CRI, 2700k and are UL listed. Additional specifications and details for this product are available in ‘downloads’ section. Professional installation required. Residential or contract use.

skram

T10	main body: 2w x 2d x 19.38h / 5cm x 5cm x 49cm	projection from wall: 4 / 10cm	cover plate diameter: 6 / 15cm
------------	--	-----------------------------------	-----------------------------------

Metal



GML: Gunmetal



DRB: Dark
Rubbed Bronze



NRB: Natural
Rubbed Bronze