



CB-522 Wing Back Settee in solid Walnut

Wood Frame Settee

by BassamFellows

Contemporary

Italy

“Living in a glass house makes you design pieces to look immaculate from every angle,” says Craig Bassam, who designed the BassamFellows Wood Frame Lounge Collection for his own home. Despite being conceived ‘in the round,’ the lounges are infinitely adaptable pieces, appearing as chic in downtown Manhattan lofts as they do in Connecticut modernist homes. This versatility is the result of the lounge’s rigorously conceived form, which deconstructs the bulkiness of traditional lounge seating. As such, the form is reduced to its essence — an exposed structural wood frame elevated to fine cabinetry and a system of thin, layered cushions for ultimate comfort. Within its minimal profile are seat and back cushions comprised of a variable density foam core surrounded by plush down and feather pillows that are hand sewn, tufted and welted. Lumbar and bolster cushions are comprised of down and feather fill.

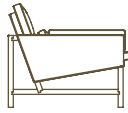
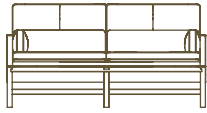
- CB-52 Low Back Settee
- CB-512 High Back Settee
- CB-522 Wing Back Settee
- CB-53 Low Back Sofa
- CB-513 High Back Sofa
- CB-533 AWing Back Sofa



WOOD FRAME SETTEES & SOFAS

COUP D'ETAT

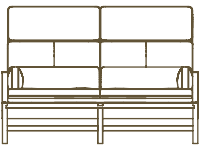
DESCRIPTION	DIMENSIONS	COM	COL	CODE
-------------	------------	-----	-----	------



W 55 1/2"
 D 33 1/2"
 H 28 1/2"
 SH 16"
 AH 20"

15 1/2 yd 279 sq ft CB-52

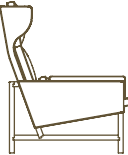
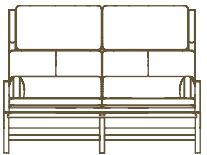
CB-52
 Low Back Settee



W 55 1/2"
 D 23 3/4"
 H 37 1/2"
 SH 16"
 AH 20"

16 yd 288 sq ft CB-512

CB-512
 High Back Settee



W 55 1/2"
 D 23 3/4"
 H 42"
 SH 16"
 AH 20"

18 yd 324 sq ft CB-522

CB-522
 Wing Back Settee

WOOD TYPES:

Solid Ash (A)
 Solid Oak (O)
 Solid Walnut (W)

WOOD FINISHES:

Ebonized black lacquer on Ash (EB) or bleached, white pigment, matte acrylic on Ash (BL). Raw effect lacquer on Oak (RE). Hand rubbed natural oil on Oak or Walnut (NA), or hand rubbed black oil on Walnut (BO).

TEXTILES:

1 - COM
 Kalista, Saille
 3
 Bellano,
 Capri, Milaner,
 Panno di Dolce,
 Pristina, Resca,
 Wool Tweed
 5
 Allusion, Staple

LEATHER:

A - COL
 Coach
 Elegant
 B
 Comfort

WOOD FRAME SETTEES & SOFAS

COUP D'ETAT

DESCRIPTION	DIMENSIONS	COM	COL	CODE		
 	W 81 1/2" D 33 1/2" H 28 1/2" SH 16" AH 20"	22 1/2 yd	405 sq ft	CB-53	1 - \$13,290 3 - \$16,510 5 - \$18,130	A - \$19,180 B - \$21,530
CB-53 Low Back Sofa						
 	W 81 1/2" D 33 1/2" H 37 1/2" SH 16" AH 20"	24 yd	432 sq ft	CB-513	1 - \$16,670 3 - \$20,110 5 - \$21,830	A - \$23,020 B - \$25,560
CB-513 High Back Sofa						
 	W 81 1/2" D 33 1/2" H 42" SH 16" AH 20"	27 yd	486 sq ft	CB-533	1 - \$16,510 3 - \$20,380 5 - \$22,320	A - \$23,530 B - \$26,340
CB-533 Wing Back Sofa						

WOOD TYPES:

Solid Ash (A)
 Solid Oak (O)
 Solid Walnut (W)

WOOD FINISHES:

Ebonized black lacquer on Ash (EB) or bleached, white pigment, matte acrylic on Ash (BL). Raw effect lacquer on Oak (RE). Hand rubbed natural oil on Oak or Walnut (NA), or hand rubbed black oil on Walnut (BO).

TEXTILES:

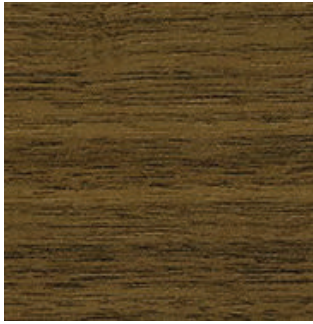
1 - COM
 Kalista, Saille
 3
 Bellano, Capri, Milaner, Panno di Dolce, Pristina, Resca, Wool Tweed
 5
 Allusion, Staple

LEATHER:

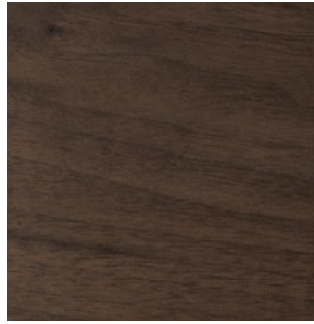
A - COL
 Coach
 Elegant
 B
 Comfort

Wood

by BassamFellows



Walnut
W-NA



Walnut Black Oil
W-BO



Oak
O-NA



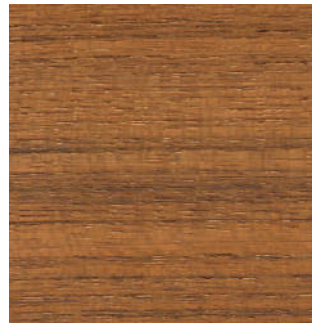
Oak Raw Effect
O-RE



White Ash
A-BL



Ebonized Ash
A-EB



Teak
T-NA



Iroko
I-NA



Sage Green Ash
A-SG



Sun Yellow Ash
A-SY



Horizon Blue Ash
A-HB



Mesa Red Ash
A-MR

Elegant

by BassamFellows



95947 Oxblood



11038 Platinum Gray



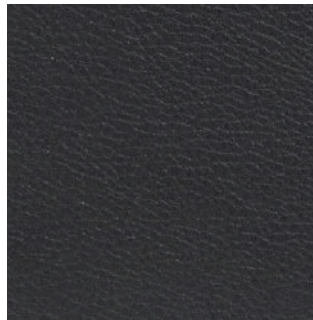
43024 Camel



43807 British Tan



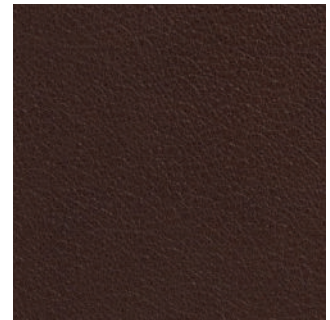
48027 Olive



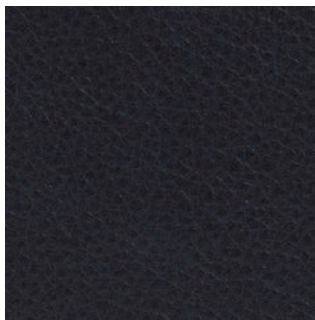
91059 Anthracite



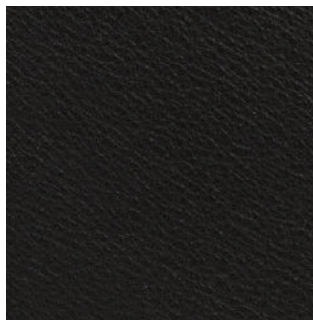
93718 Dark Cognac9



3957 Dark Brown



97026 Dark Navy



99001 Black

Elegant grain leather is aniline-dyed with a batique-effect that displays the natural character of the original Scandinavian cattle hide.

Additional colors available. Minimum and upcharge may apply.

Raw Material
Grain leather from
Scandinavian cattle

Finish
Pure aniline leather

Price Grade
A

Coach

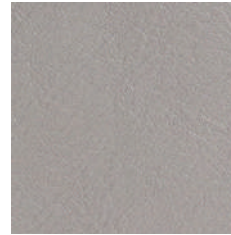
by BassamFellows



00118 Milk



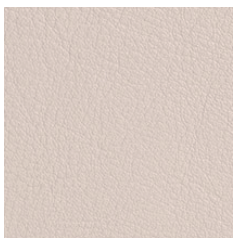
11073 Pale Gray



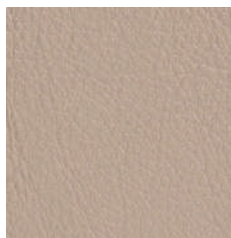
11049 Medium Gray



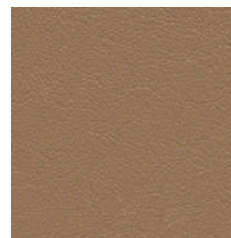
13048 Elephant



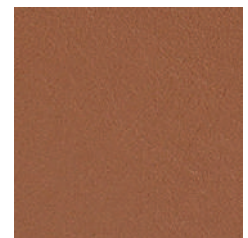
01061 Gray Beige



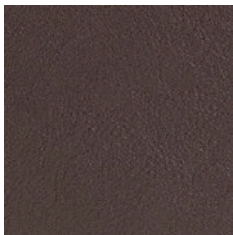
13072 Taupe



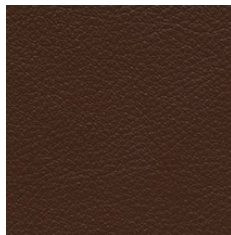
02119 Camel



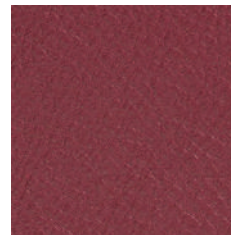
33004 British Tan



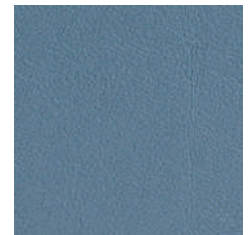
93129 Dark Chocolate



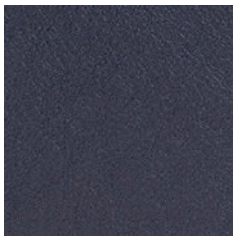
93109 Topaz Brown



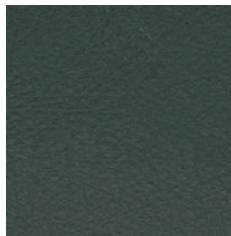
35126 Oxblood



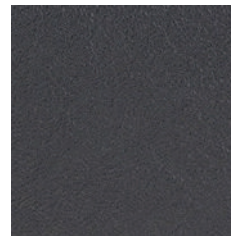
17027 Cadet Blue



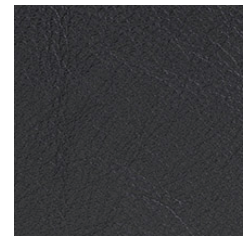
77127 Dark Navy



98015 Dark Green



91102 Anthracite



99999 Black

Coach is a chrome free, soft and pliable semi-aniline leather that offers outstanding comfort combined with excellent durability and is suitable for public environments.

Additional colors available. Minimum and upcharge may apply.

Raw Material
Grain leather from
Scandinavian cattle

Finish
Semi-Aniline leather

Price Grade
A

Comfort

by BassamFellows



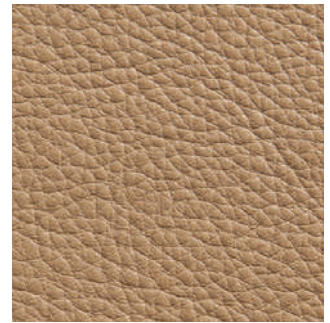
02067 Beige



12114 Gray Beige



33286 Chestnut Brown



43632 Camel



91089 Anthracite



93287 Chocolate



97054 Navy



99991 Black

Like the name suggests, Comfort is a soft aniline leather that showcases a varied grain and the distinct features of the natural hide.

Additional colors available. Minimum and upcharge may apply.

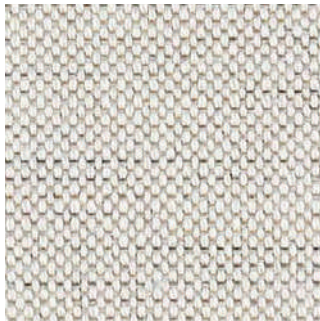
Raw Material
Grain leather from
Scandinavian cattle

Finish
Pure aniline leather

Price Grade
B

Kalista

by BassamFellows



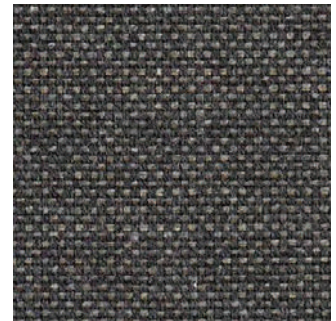
1AL02 Natural



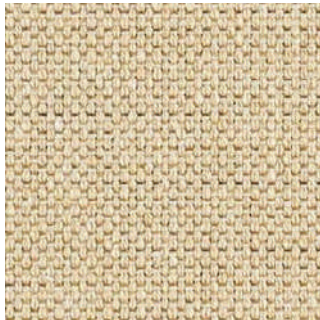
1AL03 Titanium



1AL04 Pewter



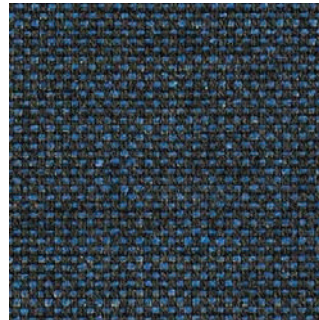
1AL05 Starry Night



1AL08 Dune



1AL10 Bluestone



1AL12 Night Sky

Woven using recycled cotton from the apparel industry, Kalista is a plain weave using space-dyed yarns to create a slightly varied, striated appearance in this classic fabric.

Additional colors available. Minimum and upcharge may apply.

Content

71% Post-Industrial Recycled Cotton,
18% Post-Industrial Recycled Polyester,
11% Polyester

Finish

PFOA-Free
Stain Resistant

Width

54"

Price Grade

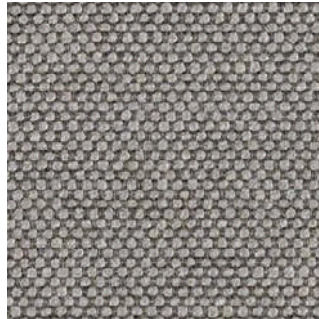
1

Saille

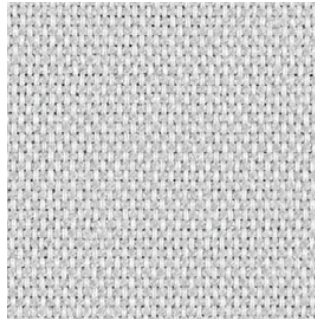
by BassamFellows



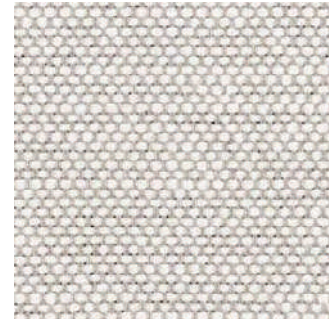
18001 Coal



18002 Shale



18003 Haze



18004 Stone



18005 White



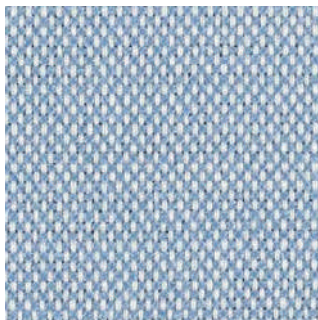
18006 Beach



18007 Sand



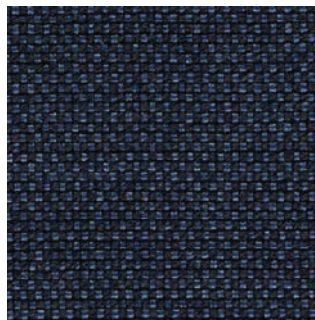
18010 Fog



18013 Summer Sky



18014 Lake



18015 Midnight Blue

A versatile foundational textile, Saille is a uniform plain weave using two yarn colors to create the effect of a classic canvas sailcloth.

Additional colors available. Minimum and upcharge may apply.

Content
69% Cotton,
31% Polyester

Finish
PFOA-Free
Stain Resistant

Width
57"

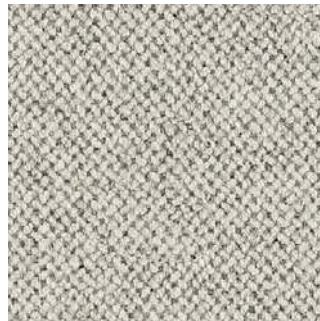
Price Grade
1

Bellano

by BassamFellows



1AX01 Pearl



1AX02 Fog



1AX03 Fawn



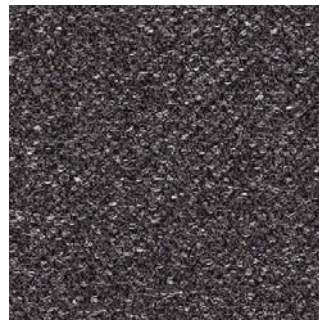
1AX04 Pumice



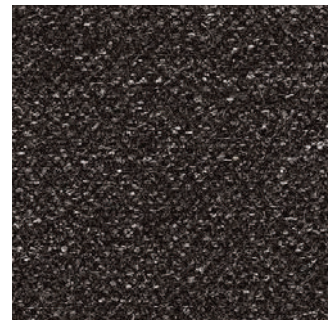
1AX05 Pewter



1AX06 Atlantic



1AX10 Charcoal



1AX11 Umber

A blending of natural fibers—wool, linen and alpaca— gives Bellano a slight sheen and luxurious texture.

Additional colors available. Minimum and upcharge may apply.

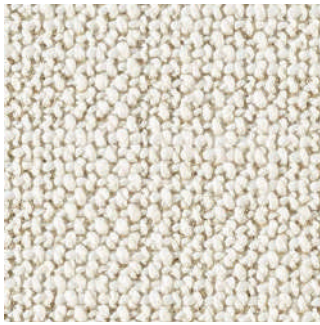
Content
75% Wool, 10% Linen,
8% Nylon, 7% Alpaca

Width
55"

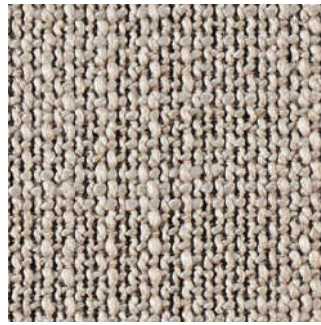
Price Grade
3

Capri

by BassamFellows



17201 Snow



17202 Stone



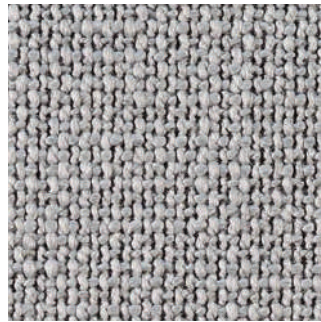
17203 Trench



17204 Graphite



17205 Anthracite



17206 Light Silver

A soft, highly textural fabric, Capri is woven using a combination of irregular heavy yarns and refined, tightly spun cotton yarns, giving it a multidimensional appearance appropriate in any climate.

Additional colors available. Minimum and upcharge may apply.

Content

36% Cotton, 32% Acrylic,
24% Rayon, 8% Polyester

Finish

PFOA-Free
Stain Resistant

Width

55"

Price Grade

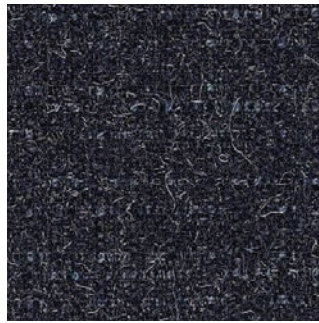
3

Milaner

by BassamFellows



17103 Bark



17104 Deep Navy



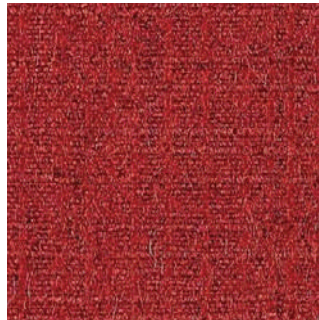
17105 Charcoal



17106 Medium Gray



17107 Ash



17108 Crimson

Reminiscent of fine suiting fabric, Milaner uses a mixture of yarns and a mélange of fibers to create a heathered texture with a subtle check.

Additional colors available. Minimum and upcharge may apply.

Content

56% Wool, 10% Acrylic,
10% Alpaca, 10% Cotton,
8% Nylon, 6% Rayon

Width

55"

Price Grade

3

Panno di Dolce
by BassamFellows



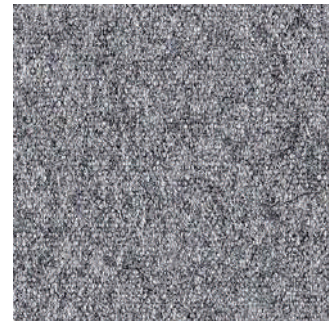
1AV01 Fog



1AV02 Dune



1AV03 Trench



1AV04 Flannel



1AV05 Charcoal



1AV06 Umber



1AV07 Deep Navy



1AV08 Graphite

A classic textile, Panno di Dolce mixes a combination of yarns to achieve a refined heathered wool flannel appearance.

Additional colors available. Minimum and upcharge may apply.

Content
65% Wool, 20% Nylon,
15% Alpaca

Width
55"

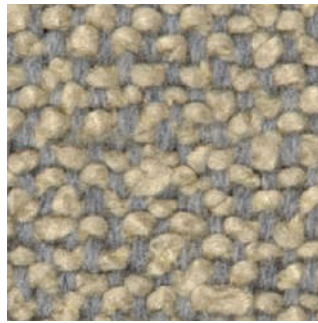
Price Grade
3

Pristina

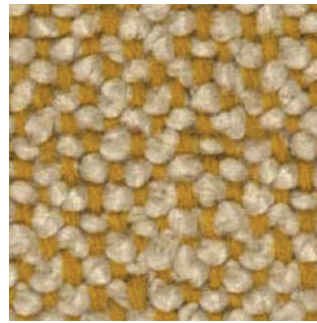
by BassamFellows



1JC01 Dove



1JC02 Goldstone



1JC03 Daybreak



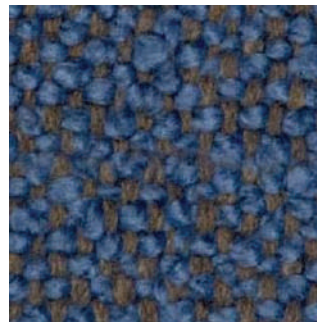
1JC04 Pumice



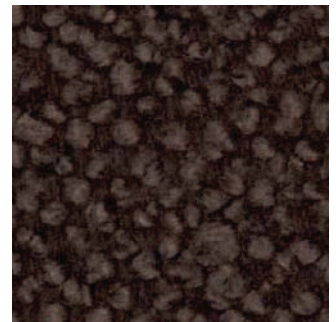
1JC05 Cappuccino



1JC06 Gunmetal



1JC07 Caspian1



1JC08 Café Noir

Pristina is a two-toned classic wool bouclé that takes inspiration from the highly tactile upholstery made famous in mid-century design.

Content

37% Wool, 25% Viscose,
17% Acrylic, 15% Cotton,
6% Polyester

Finish

PFOA-Free Stain Resistant

Width

54"

Price Grade

3

Resca

by BassamFellows



1AW01 Fog



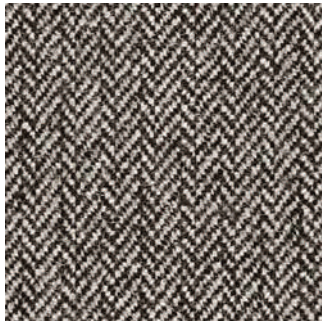
1AW02 Dune



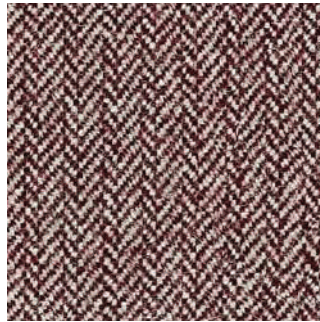
1AW03 Trench



1AW04 Flannel



1AW05 Umber



1AW06 Bordeaux

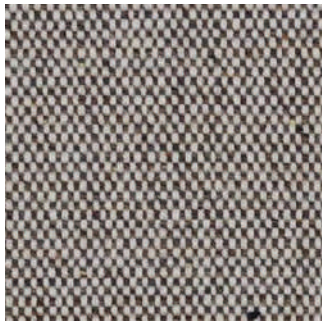
A subtle nod to menswear, Resca uses light and dark woolen yarns to create an updated small-scale asymmetrical herringbone.

Content
75% Wool, 10% Linen,
8% Nylon, 7% Alpaca

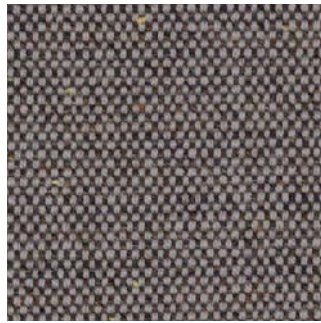
Width
56"

Price Grade
3

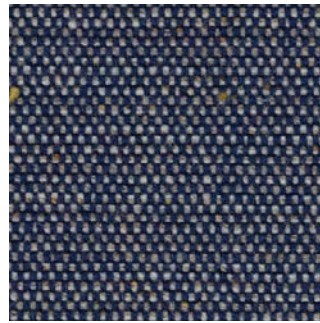
Wool Tweed by BassamFellows



16601 Trench



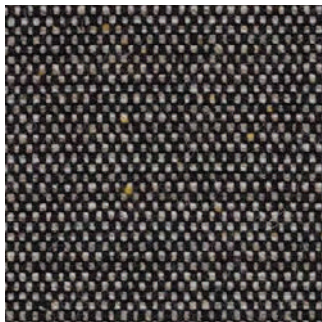
16602 Pewter



16605 Navy



16606 Umber



16607 Charcoal

Made in New Zealand from ultra-soft, locally sourced wool, this multicolored woolen fabric is reminiscent of Donegal tweed, characterized by bright flecks of color randomly woven throughout.

Additional colors available. Minimum and upcharge may apply.

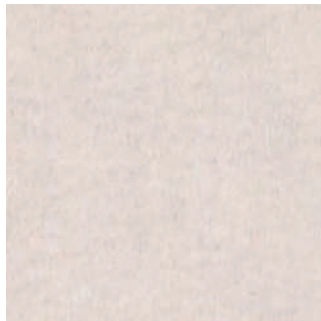
Content
80% Wool,
20% Nylon

Width
54"

Price Grade
3

Allusion

by BassamFellows



1GS01 Moonlight1



GS02 Pearl Gray



1GS03 Platinum



1GS04 Smoky Taupe



1GS05 Camel



1GS07 Chestnut Brown



1GS11 Sterling1



GS12 Anthracite

An opulent alpaca velvet, Allusion has subtle shade variation in the dense, non-directional pile, featuring a special finish for exceptional wearability.

Additional colors available. Minimum and upcharge may apply.

Content
60% Alpaca,
27% Wool,
13% Nylon

Width
56"

Price Grade
5

Staple

by BassamFellows



16101 Light Native Umber



16103 Pearl Gray



16104 Light Gray



16105 Ferric Gray



16106 Black Green



16107 Prussian Blue1



6108 Navy



16110 Chestnut Brown



16111 Ruby Red

Staple is classic wool velvet, with a dense, non-directional pile, giving it a matte appearance and high durability.

Additional colors available. Minimum and upcharge may apply.

Content
100% Wool

Width
54"

Price Grade
5