



## Armor Sconce

*by Konekt*

*Contemporary*

United States

The Armor Sconce features a carefully crafted hand-blown glass pendant draped with finished stainless steel chainmail. Pulling from the intricate use of chainmail in Medieval armor, we reinterpret its materiality by creating a balance between the strength that the metal mesh evokes and the delicate and elegant nature of hand-blown glass.

**Dimensions:** 18"H x 6"W x 12 1/8"D

**Materials:** Hand-blown Glass, Brass and Finished Stainless Steel Chainmail.

**UL listed.**

DESCRIPTION	DIMENSIONS	LAMPING	INCLUSIONS
	18"H x 6"W x 12 1/8"D	E12   120V   60W	9.5W dimmable LED bulb included 120V; 950 lumens; 2700k

CHAINMAIL:

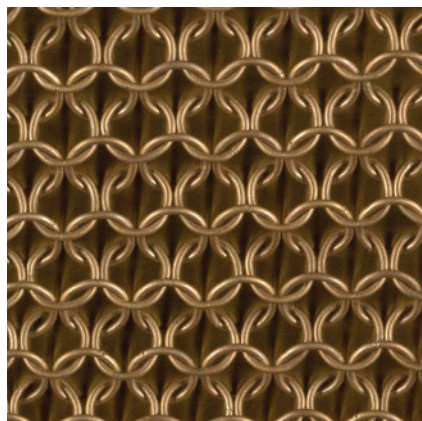
- Satin Brass
- Antique Brass
- Oil-rubbed Bronze
- Satin Black
- Satin Nickel
- Antique Nickel

ADDITIONAL:

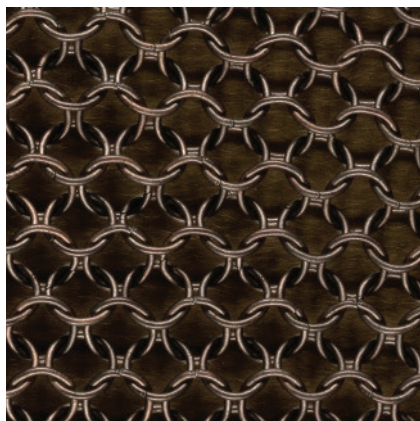
UL listed.

## Chainmail Options for Armor Collection

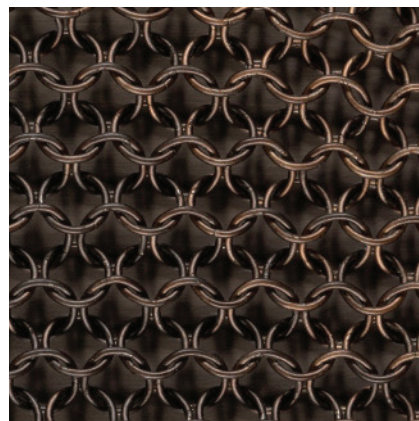
by Konekt



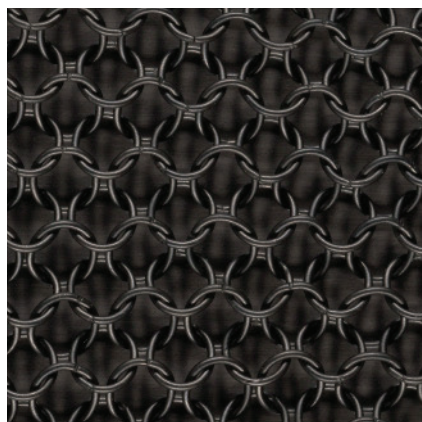
Satin Brass



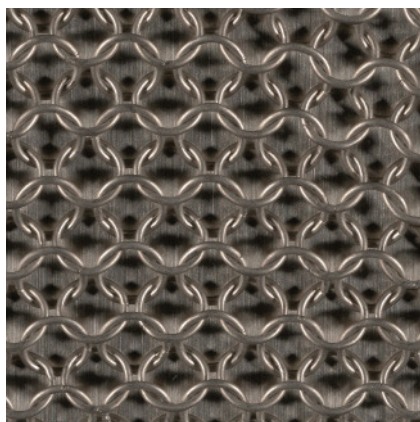
Antique Brass



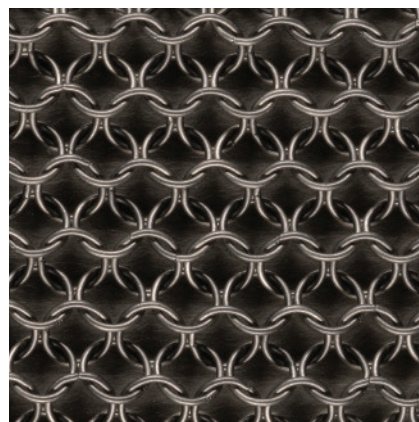
Oil-Rubbed Bronze



Satin Black



Satin Nickel



Antique Nickel

### CHAINMAIL:

Konekt's Armor Collection features furniture and lighting designs that are draped in cloaks of stainless steel chainmail. Working with an American company that has been producing chainmail since 1876, we create chainmail patterns to hug the shape and size of each design. Panels of chainmail are made by machine, and then joined by hand to create a pattern. We've established our own unique finishing process, allowing us to offer extensive finish options for clients to choose from.