



Layered Coffee Table

by Konekt

Contemporary

United States

Meticulously hand-sculpted, convex layers of bronze and/or steel evoke the soft curves and distinct layers of tumblers stones shaped by the ocean. A center layer serves as a functional shelf, and can be made in a contrasting finish. Each table is made by hand and is marked by unique characteristics.

**Polished bronze is left unlacquered as a live finish, in order to allow a rich, natural patina to develop over time.*

**Free form and hand-sculpted, each piece is slightly unique.*

Dimensions: 58"W x 38"D x 17"H

Custom dimensions available.

Materials: Bronze and/or Steel.

Metal Finishes: Blackened Steel, Blackened Steel With Hand-patina Bronze Shelf, Blackened Steel With *polished Bronze Shelf, Hand-patina Bronze, or Hand-patina Bronze With *polished Bronze Shelf.

Metal Finish Options for Layered Coffee Table

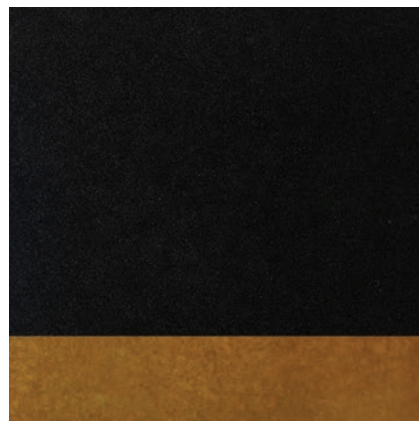
by Konekt



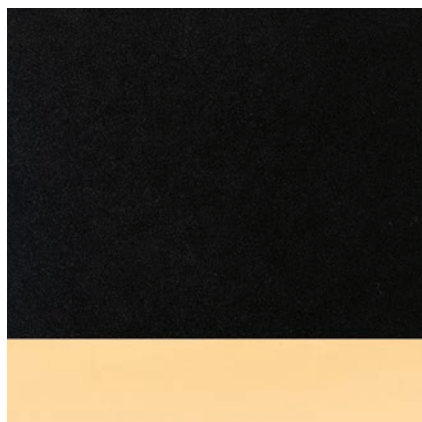
Blackened Steel



Hand-Patina Bronze



Blackened Steel with Hand-Patina Bronze Shelf



Blackened Steel with Polished Bronze Shelf



Hand-Patina Bronze with Polished Bronze Shelf

ADDITIONAL:

*Polished Bronze is left unlacquered as a live finish, in order to allow a rich, natural patina to develop over time.