

COUP D'ETAT

CATALOG 2026

AFTER EDITIONS
BAROVIER&TOSO
BASSAMFELLOWS
CHRISTOPHER BOOTS
CHUCK MOFFIT
COUP STUDIO
COUP STUDIO FABRICS
COUP XX
DAMIAN JONES
DANIEL SHAPIRO
DAX SAVAGE
DE LA VEGA
DOUGLAS FANNING
EDWIN MALDONADO
GALLERY ELISE
ENTRELACS
ERWAN BOULLLOUD
FELIX MUHRHOFER
GREGORY BESON
HARRY SITER
JG SWITZER
JOCELYN MARSH
J LISTON DESIGN
J MCDONALD
J.M. SZYMANSKI
KALLIOPI LYDAKI
KELLY FARLEY
KONEKT
LESLIE NIX
LINDA FAHEY
MARY WONG
MNEME
OCHRE
OCHRE WILD
PATRICK WEDER
PETER BOIGER
REFRACTORY
ROSE GOLD SOCIETY
SHARON BEALS
SKRAM
STUDIO NAWA

SAN FRANCISCO

LOS ANGELES

COUP D'ETAT

Founded in 2004 by Darin Geise, COUP D'ETAT is a design gallery operating outside the conventions of the traditional showroom. With locations in San Francisco and Los Angeles, the gallery presents a highly edited mix of rare antiques, vintage furniture, contemporary design, and one-of-a-kind works by artists and artisans from around the world. Each piece is selected for its clarity of form, material integrity, and point of view.

COUP D'ETAT is known for its progressive visual language and ever-evolving gallery experience, with each space reimaged multiple times each year to reflect new work, evolving ideas, and cultural shifts.

The gallery represents a carefully curated roster of designers and makers, while also presenting its own in-house collection, COUP STUDIO. Together, they reflect an uncompromising approach to curation, and a bold refusal of the ordinary.



Locate in:

[San Francisco](#)

[Los Angeles](#)

4-6	AFTER EDITIONS	37-39	DE LA VEGA	70-72	J LISTON DESIGN	103-105	OCHRE WILD
7-9	BAROVIER&TOSO	40-42	DOUGLAS FANNING	73-75	J MCDONALD	106-108	PATRICK WEDER
10-12	BASSAMFELLOWS	43-45	EDWIN MALDONADO	76-78	J.M. SZYMANSKI	109-111	PETER BOIGER
13-15	CHRISTOPHER BOOTS	46-48	FELIX MUHRHOFER	79-81	KALLIOPI LYDAKI	112-114	REFRACTORY
16-18	CHUCK MOFFIT	49-51	GALLERY ELISE	82-84	KELLY FARLEY	115-117	ROSE GOLD SOCIETY
19-21	COUP STUDIO	52-54	GREGORY BESON	85-87	KONEKT	118-120	SHARON BEALS
22-24	COUP STUDIO FABRICS	55-57	ENTRELACS	88-90	LESLIE NIX	121-123	SKRAM
25-27	COUP XX	58-60	ERWAN BOULLLOUD	91-93	LINDA FAHEY	124-126	STUDIO NAWA
29-30	DAMIAN JONES	61-63	HARRY SITER	94-96	MARY WONG		
31-33	DANIEL SHAPIRO	64-66	JG SWITZER	97-99	MNEME		
34-36	DAX SAVAGE	67-69	JOCELYN MARSH	100-102	OCHRE		

AFTER EDITIONS



RACHIS TABLE

After Editions is a collective of creative talents, founded in 2023 by Dylan and Nicolette Farrell. We design objects that unite contemporary craftsmanship with courageous playfulness. Born of a love for collaging utility with ornament and constructivism with romance, our studio takes joy in tinkering with unexpected visual narratives that are grounded in classical sensibilities.

Each object offered by After Editions is thoughtfully crafted in close collaboration with some of the world's most talented artisans, combining age-old techniques with the most modern technologies available. Artistic risks are taken. Gimmicks are avoided. The goal is to offer heirloom pieces filled with undiluted personality.



ANTLER CONSOLE



SAIL CHANDELIER



WONDERLAND WALL SCULPTURE



LEVELLER BAR STOOLS



LADY LEVELLER CHAIR



Few brands that exist today can claim to predate the Italian Renaissance, but Murano, Italy-based lighting company Barovier&Toso is one such brand. Founded in 1295 by the Barovier family, Barovier&Toso is credited as the world's sixth-oldest business still in operation.

For over 20 generations, these glassmakers have become masters in the art of Venetian glass. This company demonstrates remarkable expertise in crafting bespoke lighting solutions while consistently innovating with a wide range of new designs, encompassing both contemporary and traditional styles that are destined to become timeless classics.

Barovier&Toso has a reputation for illustrious lighting designs and a discriminating clientele; this company's timeless obsession with perfection and innovation has lasted more than 700 years.



AGADIR



PERSEUS



AGAVE



CAMPANULA



SPINN

BASSAMFELLOWS



WOOD FRAME LOUNGE CHAIR AND ASYMMETRIC SOFAS

Architect Craig Bassam and creative director Scott Fellows are the founders of BassamFellows and the Craftsman Modern aesthetic. Their aesthetic ethos was formed from their collaborative vision for the brand, marrying architectural authority with a minimal-artisanal philosophy. From its inception, the company has focused on building relationships with some of the world's leading craftspeople, whilst forging innovative and intelligent collaborations across the worlds of architecture, branding, and design. A genuine, fully integrated lifestyle brand, BassamFellows, encompasses architectural projects and interiors as well as impeccably crafted furniture.





WOOD FRAME COUNTER & KANT TABLE



RAMUS LOUNGE CHAIR



WOOD FRAME LOW BACK LOUNGE CHAIRS



SPOKE OCCASIONAL TABLE
& SLING CLUB CHAIRS

CHRISTOPHER BOOTS



Christopher Boots is a Melbourne-based industrial designer driven by a love of nature and light. Christopher's handmade work includes lighting, furniture, and objects. He explores the architecture of the geometry of organic shapes and is often inspired by forms found in plants, animals, and minerals.



Available in:

San Francisco

Los Angeles



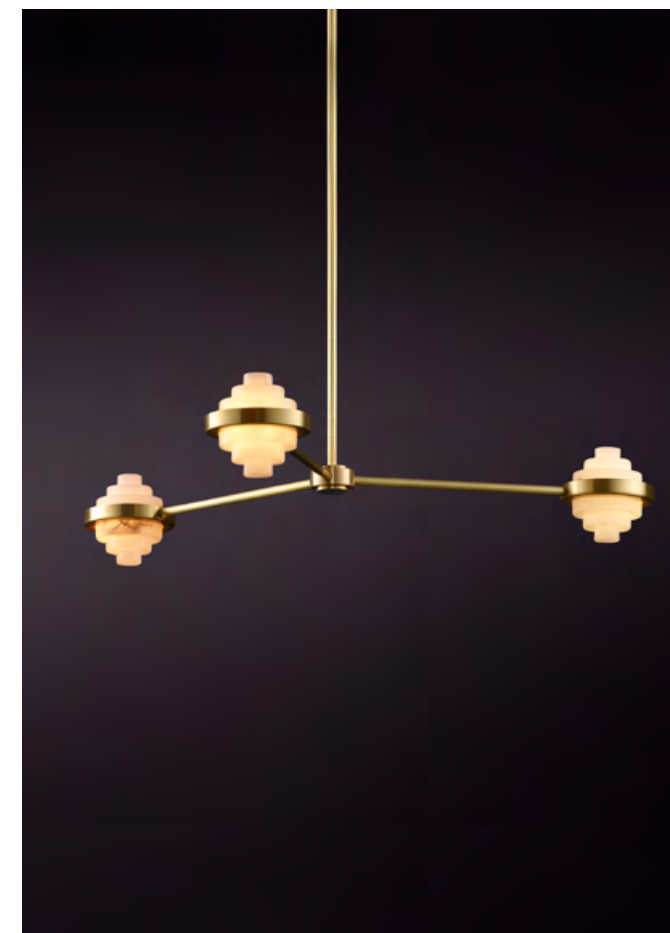
PETRA I COLUMN



OURANOS



NARCISSUS



IRIS TRIA

CHUCK MOFFIT



ARMOR SIDEBOARD

Southern California-based artist and furniture designer Chuck Moffit creates work that marries time-honored techniques with innovative mechanics. His collections balance brutalist processes while incorporating delicate details. Moffit creates his pieces out of glass, steel, bronze, and leather, but is not confined by these materials and is engaged in experimenting with unexpected elements. His work often blurs the lines between art and functional furniture.



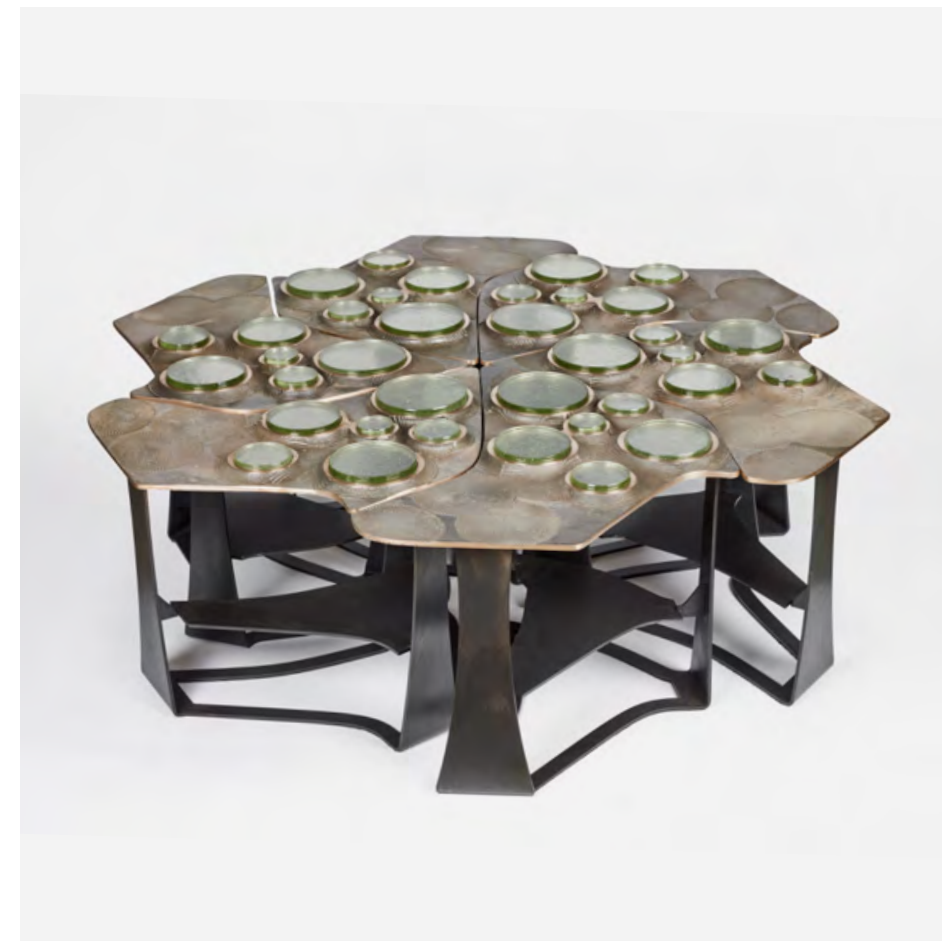
TOPO XX003



INSURGO TABLE LAMP



STRATUM DINING TABLE



TIBERINUS COFFEE TABLE

COUP STUDIO



CASINO ARMOIRE, CREDENZA & SOFFICE SECTIONAL

Founded in 2010 by Darin Geise, COUP STUDIO merges modern craftsmanship with a passion for high-quality antiques and vintage designs. Inspired by Geise's extensive travels and discerning eye, the collection offers collectible, elevated pieces that endure stylistically and materially. This range spans luxury furniture to statement lighting, each crafted with exceptional artistry and quality.

Designed in-house and produced by master artisans in California and Italy, COUP STUDIO emphasizes customization through unique finishes, sizes, and fabric choices. The studio's collaborations with renowned artists yield exclusive, limited-edition pieces that underscore its commitment to refined design and meticulous execution, overseeing every detail from conception to completion.





AQUITAINE CHANDELIER



BELL CHANDELIER



MUSHROOM STOOL & BELO TABLE



BIOMORPHIC SECTIONAL

COUP STUDIO FABRICS



Alongside Darin Geise's distinguished COUP STUDIO furniture and lighting collections, he has channeled his diverse talents into the curation of a textile collection. COUP STUDIO FABRICS reflect his powerful visual perspective, harmoniously intertwined with a meticulously selected color palette that mirrors the brand's lively and playful aesthetic.

We partner with expert weavers who share our passion for design and quality to produce exceptional textiles.

The collections boast a refined interplay of approachable shades and textures, thoughtfully designed to integrate into a wide range of applications. They not only complement our comprehensive furniture offerings but also elevate the aesthetic of any space.



SKYLINE - CAMEL



SUVERETO - LINEN



ZUCCHEROSO - WOVEN



PANZANO - WOVEN



BEL LINO - LINEN

COUP XX

* THE ITEMS ON THIS PAGE ARE ONLY FOR REFERENCE. ITEMS SHOWN MAY NOT BE AVAILABLE. PLEASE INQUIRE.



CONFIDENTIAL SECTIONAL & CHAIR & TINO FLOOR LAMP

COUP XX, a curated collection of twentieth-century design and an assortment of contemporary pieces that nod to the past. All handpicked by COUP D'ETAT founder, Darin Geise.

COUP D'ETAT was established in 2004 by Geise. In a tiny storefront on 18th Street in San Francisco, he conceived an amalgam space, equal parts traditional and modern. Geise quickly developed a following in the San Francisco design community and became a resource for curated vintage and antique furniture.

During its 18 years of business, COUP D'ETAT has evolved into a contemporary design gallery. This change has not altered the desire to continue to showcase unique vintage pieces. The backbone of our visual displays is the layering of contemporary and vintage furnishings.

Darin's passion for travel and discovery fuels his commitment to sourcing high quality vintage that is available in both COUP D'ETAT locations.



DIAMANT DINING CHAIRS

Available in:

San Francisco

Los Angeles



MOONGAZER BY EVAN CHAMBERS



BRECCIA TROLLEY BY UGO LA PIETRA



TAO SIDE TABLE
BY PHILIP & KELVIN LAVERNE



LURCAT BAR TROLLEY & H269 ARMCHAIR

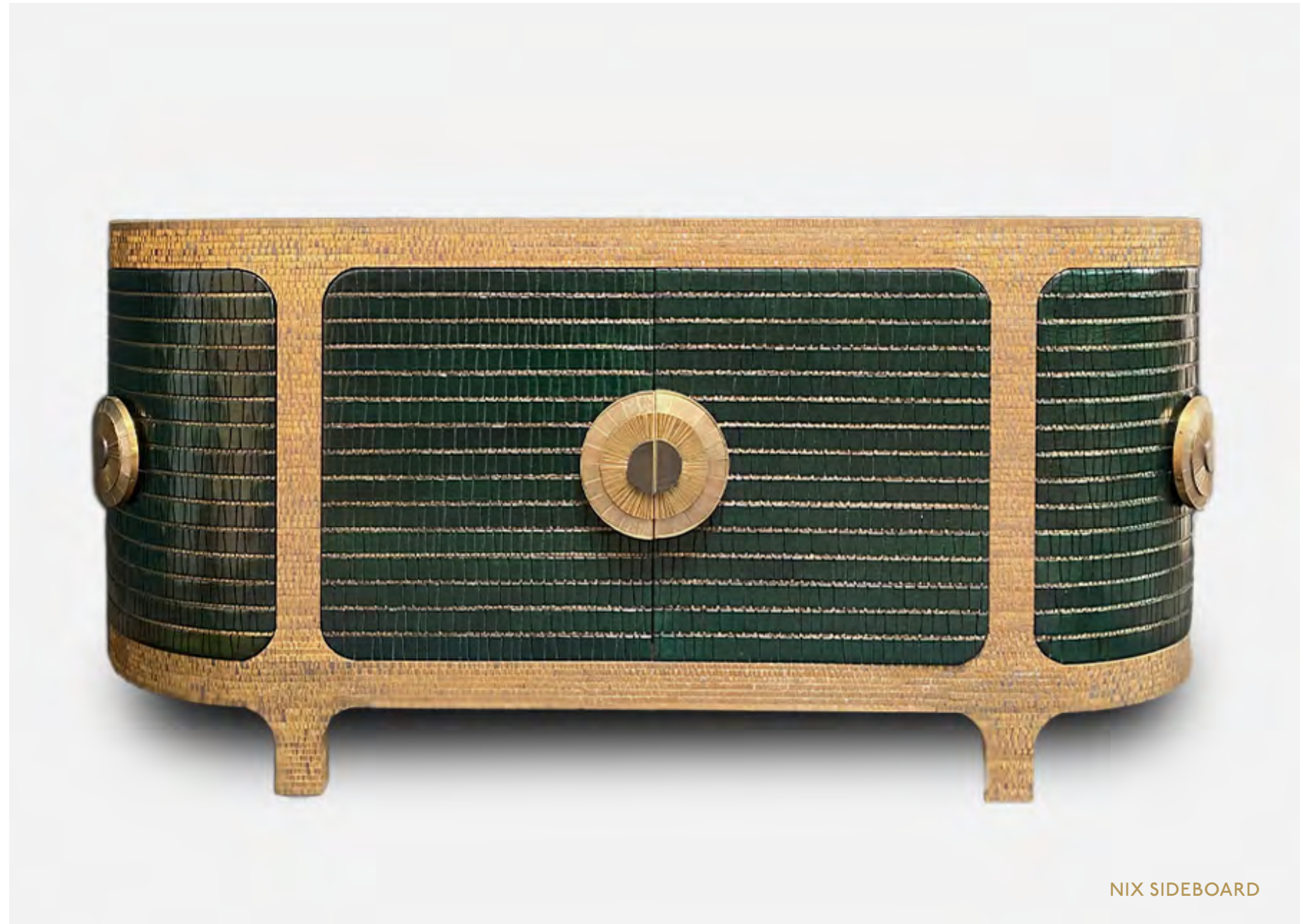
DAMIAN JONES



MEDALLION CREDENZA

Damian Jones is a Welsh-born, Los Angeles-based furniture designer renowned for his sculptural creations that combine traditional craftsmanship with a contemporary edge. His work blends exotic woods with hand-cut bronze tiles, forming intricate, faceted patterns that highlight his distinct design language. Each piece reflects Jones' deep reverence for materiality and craftsmanship, resulting in furniture that is both commanding and multi-dimensional.

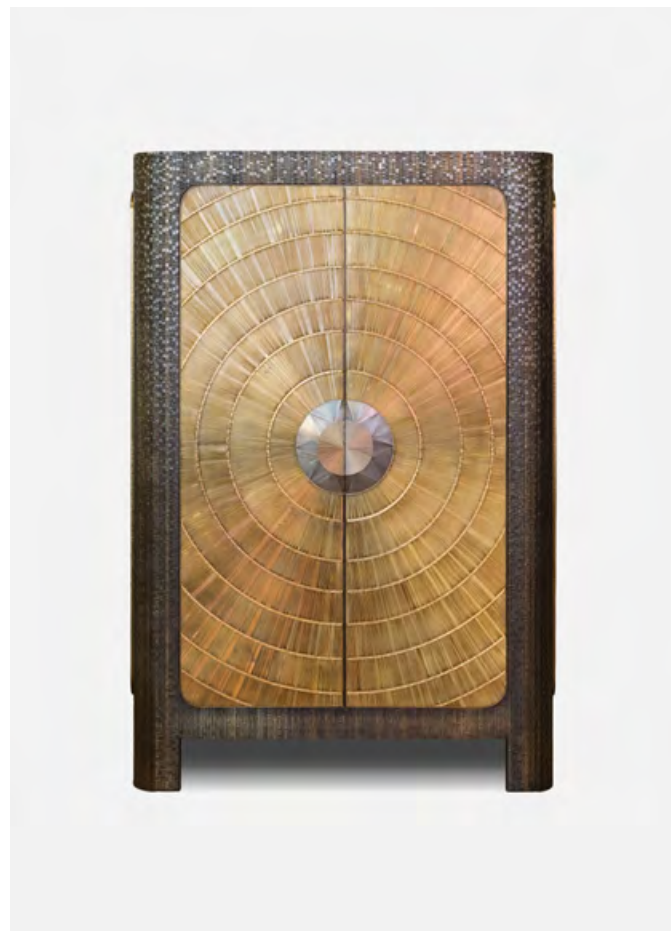
Drawing inspiration from a wide range of influences—from the ornamentation of Italian Art Nouveau to the bold, tactile forms of East African tribal art—Jones' work defies conventional aesthetics. The intricate bronze detailing, reminiscent of celestial patterns, imbues each piece with a luminous, jewel-like quality.



NIX SIDEBOARD



IGNACIO SIDE TABLE



NOCTIS BAR CABINET



ZANE SCONCE



AXLE CONSOLE

DANIEL SHAPIRO



SPLAT LAMPS & CAGED SIDE TABLE

Daniel Shapiro is a ceramic artist based in St. Louis who specializes in creating works that are functional, sculptural, and rooted in imagination. Drawing upon his 15 years of experience as a graphic designer, Shapiro's approach to each piece is informed by a fusion of the digital world with the organic medium of clay. This synthesis imbues his works with a sense of playfulness and surprising energy, marrying the contemporary with the timeless.

Daniel's artistic journey has taken him through various corners of the United States, starting from a small Missouri town where he spent his formative years to Miami, New York, and Los Angeles, where he honed his skills as a designer. Each of these locations has contributed to shaping his unique design language, leaving a distinct imprint on his creations.





THE FLUTTER TABLE LAMP #2



SQUIGGLE #200



SPLAT LAMPS



RING STACK FLOOR LAMP



Dax Savage is an artist and craftsman based in Los Angeles, known for creating handmade sculptural baskets and light fixtures. His unique pieces are made from a blend of natural materials such as antlers, wood, rope, stones, and leather. Dax combines ancient weaving techniques with modern technical skills to give a fresh twist to functional art objects.

Growing up in the rural landscapes and mountains of Idaho, Dax draws inspiration from animals and nature, which has significantly influenced his artistic journey. His creations resonate with both art enthusiasts and nature lovers due to their captivating and soulful essence.

Dax's sculptural baskets comprise custom pieces for residences, commercial spaces, and private collections.



DAX SAVAGE



HANGING SHED MOOSE ANTLER BASKET



CALIFORNIA DRIFTWOOD BASKET



DRIFTWOOD BASKET PENDANT

DE LA VEGA



CAMPANHA BED

Mark de la Vega is the founder and principal designer of DE LA VEGA, based in Red Hook, Brooklyn.

DE LA VEGA takes cues from a variety of global and historical references. Mark uses the highest-quality materials to reinvent forgotten techniques. He offers rugged designs that are expertly refined with a contemporary approach to century old techniques.



DRUM COLLECTION

Available in: San Francisco Los Angeles



GIAC SIDE CHAIR



ABUELO BUREAU



GIAC BED



CAMPANHA STORAGE

DOUGLAS FANNING



RUBBLE OUTCROP V

Douglas Fanning is a New York-based artist who creates each piece by hand from his Red Hook, Brooklyn studio.

He is a passionate architect, designer, and creator whose unique work is aptly described as “tough-beauty”. His talent is a marriage of architecture, design, and physics in the form of clean, fluid, daring pieces of art.



DOUGLAS FANNING & 3 - TIER MOBILE

Available in:

San Francisco

Los Angeles



THE TILL



NESTED GROUPING



ARCHIPELAGO TABLE

EDWIN MALDONADO



EDWIN MALDONADO & EVE CHAIR

Los Angeles-based leather artisan Edwin Maldonado is a master of the lost art of traditional French leather upholstery. Edwin sculpts leather over wood and metal frames using a technique of wetting and steaming hides. His skill at manipulating and hand-finishing leather has been perfected over decades of working for luxury furniture brands. With the inception of his own collection, Edwin is free to create the furniture forms he is passionate about – designs with exaggerated curves and intricate details.



ABLE SOFA

Available in:

San Francisco

Los Angeles



ADAM CHAIR



SETH CHAIR



CAIN CHAIR



EVE CHAIR

FELIX MUHRHOFER



PRINCE JOSE, PRINCE & ERNESTO

Felix Muhrhofer is an Austrian designer working at the intersection of industrial design, interior architecture, and hands-on craftsmanship.

Educated at the University of Applied Arts Vienna and ELISAVA in Barcelona, Muhrhofer began his career working from a small, improvised workshop, using it as both laboratory and proving ground for material, form, and production logic.

From the outset, his process has been defined by an insistence on testing ideas through making. By refining traditional craft techniques and embracing an analog, highly controlled workflow, Muhrhofer has developed a body of work marked by formal clarity and a craft-led approach to production. Early projects included a modular terrazzo kitchen system with a single-cast countertop and integrated sink, a design so rooted in daily use that it led him to establish Vienna's first cooking club, an ongoing platform for cultural exchange.



DUKE BENU, CRENN & QUINCE



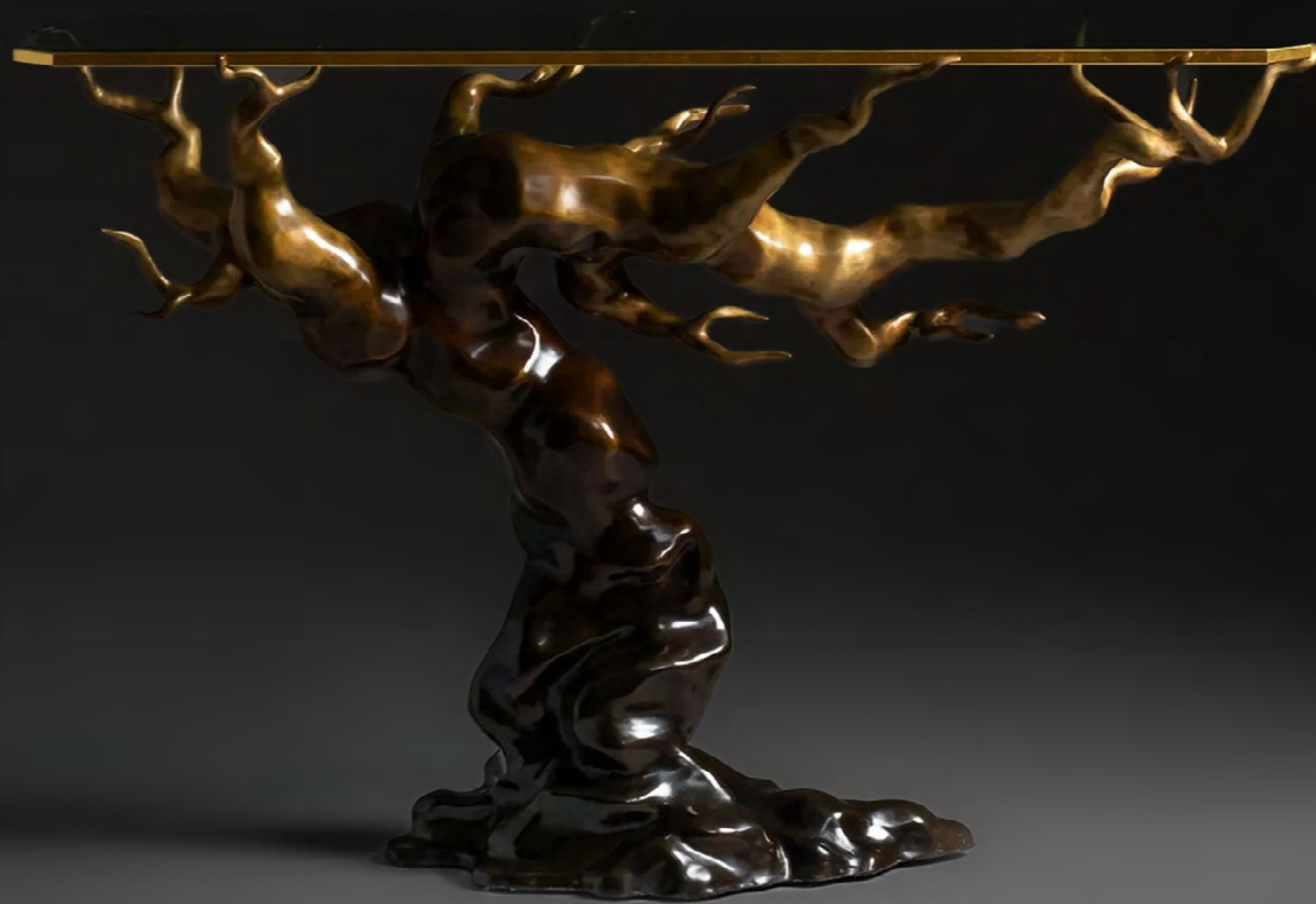
POPE RENEE



POPE SUSI



KING THISBE



Gallery Elise is a new design platform founded by Alison Legge, co-founder of Élan Atelier. Building on two decades in the international design world, Alison continues her long-standing creative partnership with Muse Design, the atelier behind the sculptural works admired by designers and collectors worldwide.

As Élan Atelier evolves, Gallery Elise carries forward this refined vision, presenting the Muse Collection alongside our own emerging works grounded in craftsmanship, material richness, and timeless form.

A new chapter in design, rooted in artistry, collaboration, and enduring beauty.



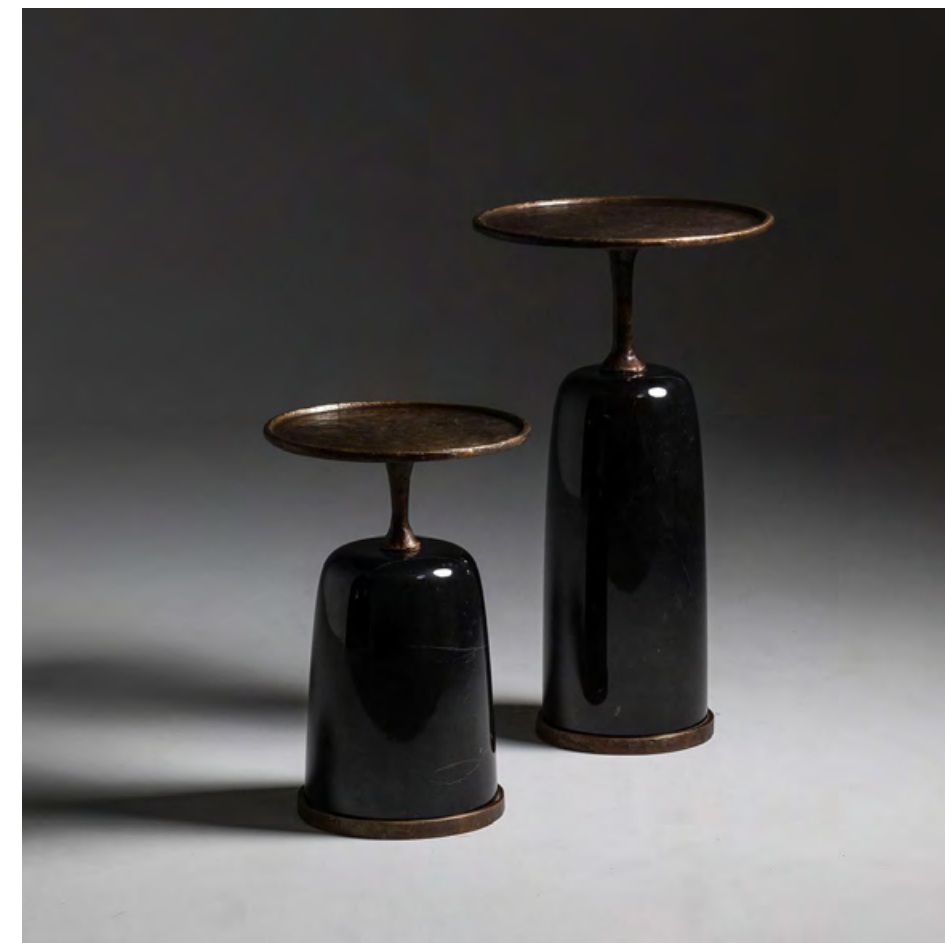
UNI VASES



ARCH CONSOLE



MANHATTAN CENTER TABLE



ALTAI SIDE TABLE

GREGORY BESON



Gregory Beson is an American-born designer and sculptor who launched his studio practice in 2018 in New York City, focusing on material culture across furniture, artifacts, and lighting. Working from his New York City atelier, Beson designs new pieces and collections, crafting or prototyping each work by hand for private clients, brands, galleries, and institutions. His work has been shown globally and is represented by galleries in New York City, Genève, Milan, and now through Coup D'Etat.



GREGORY BESON, HENRIQUE BENCH & CONSOLE

Available in:

San Francisco

Los Angeles



JL SOFA



NOA COFFEE TABLE & OTTOMANS

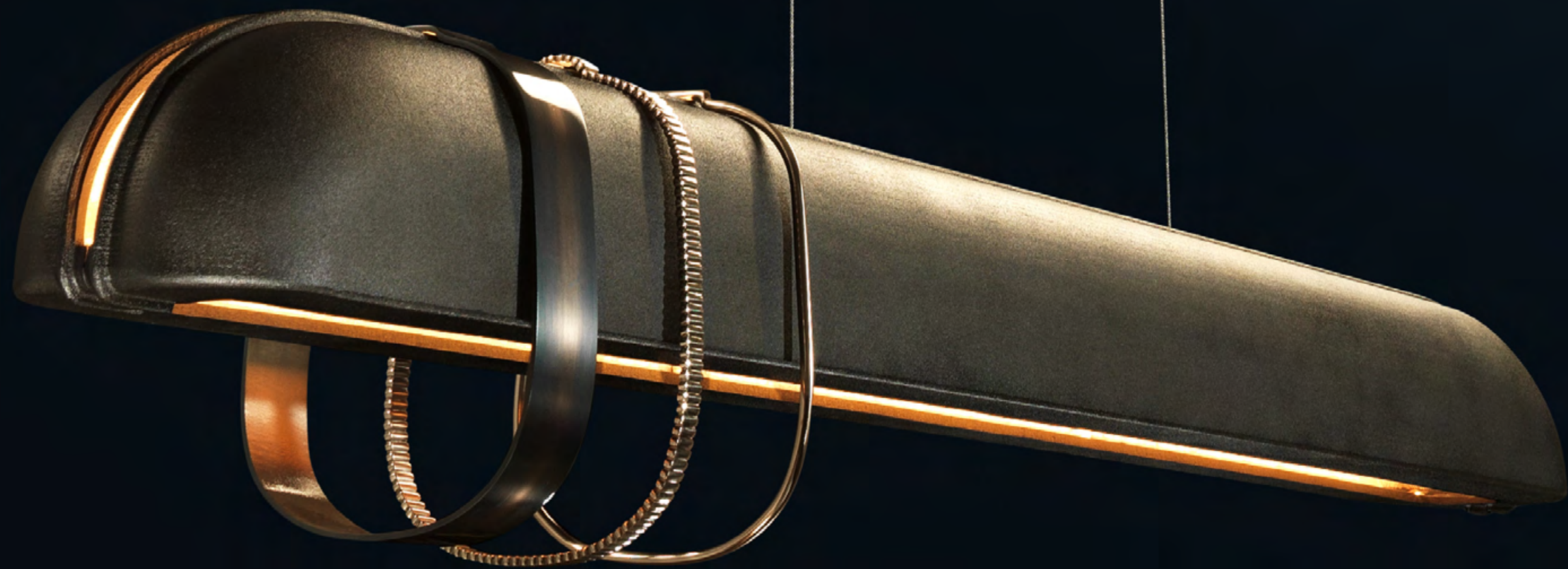


FOLIA ROTATING COFFEE TABLE / BENCH



HENRIQUE BENCH

ENTRELACS



ASH PENDANT

All Entrelacs lighting is hand crafted at the family owned Fonderie D'Art Macheret in Le Mans, France. The work relies on a passion for bronze and the creative arts. The lighting collections are a perfect balance of bronze and alabaster. The trained approach creates refined fixtures with a naturally pure and timeless result.



MOON WALL SCONCE

Available in:

San Francisco

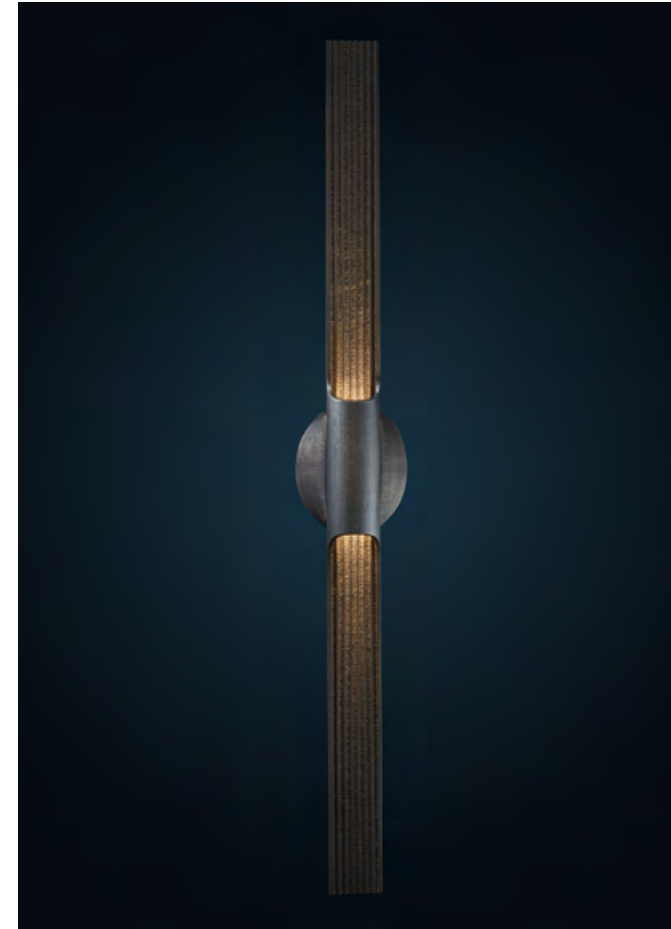
Los Angeles



TOAST SCONCE



HUBLOT MIRROR



BEAM SCONCE



NARCISSE TABLE LAMP

ERWAN BOULLOUD



CANAPÉ YARETA II

French artist, designer, and artisan, Erwan Boulloud graduated from the École Boulle. Beyond aesthetic success, he considers a work to be truly accomplished in its ability to generate descendants, which for him is a sign of its depth. His practice unites sculpture and design in an exploration of transformation, lineage, and metamorphosis, offering a body of work that engages both artistic and metaphysical questions.

Erwan Boulloud employs a wide range of materials, harnessing the potential of each to reveal its uniqueness. For Boulloud, matter is a field of experimentation: he burns, polishes, strips, dissects, and reconstructs in order to uncover hidden facets and depth. Guided by a Darwinian logic, his creations emerge in a state of perpetual effervescence, adapting and evolving to form lineages, crossbreeds, or mutations before eventually disappearing. Each assembled work carries within it a narrative that unfolds through its forms, materials, and movements.



ENFILADE CRISTAUX



PHÀO



MIROIR MAASAÏ



FETICHE II



LAMPADAIRE INOX

STUDIO HARRY SITER



MOTHER NATURE

Harry Siter creates furniture and figures that are both playful and powerful.

Since the early 1990's, Harry Siter has been immersed in his artistic development by using trees to make furniture and art. He shapes the trunks with chain saws and then uses simple, classic approaches to surface and finish. He has become a master at stabilizing thick slabs of wood, and has discovered ways to manipulate and combine them with metal to make new designs and forms.





MOTHER NATURE



DEAR HUNTER



NAIL BRUSH CONSOLE TABLE



JG Switzer is a textile and soft goods artisan studio focused on designing fabrics made of natural fibers that are hand tailored with custom patterns. Their painterly and modern felted wool is sourced from a local fibershed and made in their workshop in northern California. JG Switzer is devoted to sourcing the finest: wool, silk, linen, cashmere, cotton, and hemp. The studio is dedicated to quality at the highest level, ensuring they can deliver fabrics that are artfully abstract, sustainable, and distinctive.



FABRIC COLORWAYS AT COUP D'ETAT

Available in:

San Francisco

Los Angeles



Painterly Black & Red



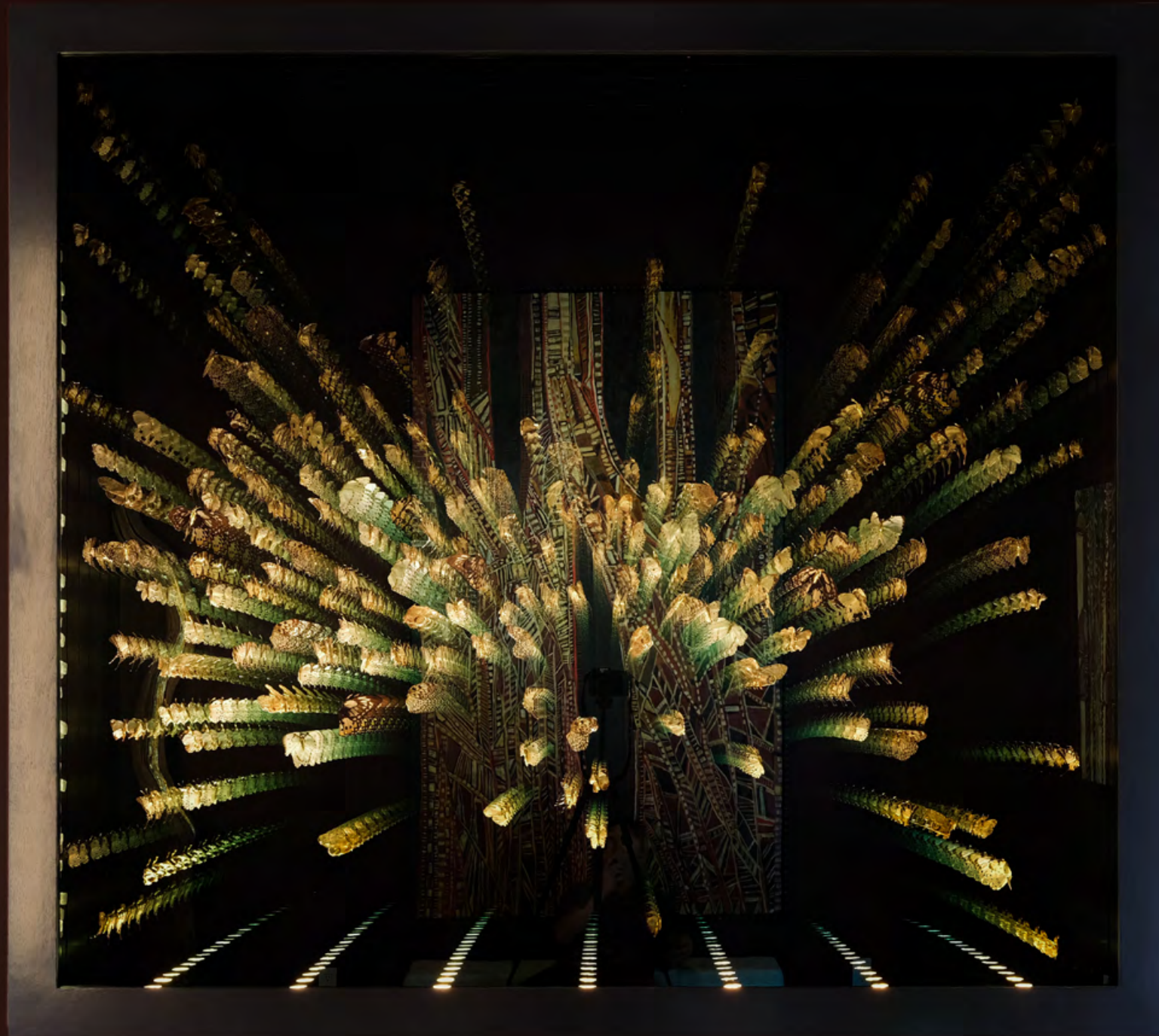
Botanical



Genesis



Tahoe



Jocelyn Marsh is a Los Angeles based artist whose primary mediums include sculpture and lighting design. Central to her work is the theme that existence springs from the unknown space between death and life, the void that causes mixed emotions throughout humanity. Focusing on the thrilling fact that from nothing comes everything, Marsh celebrates this unknown space, imparting upon her work a sense of reverence toward nature.



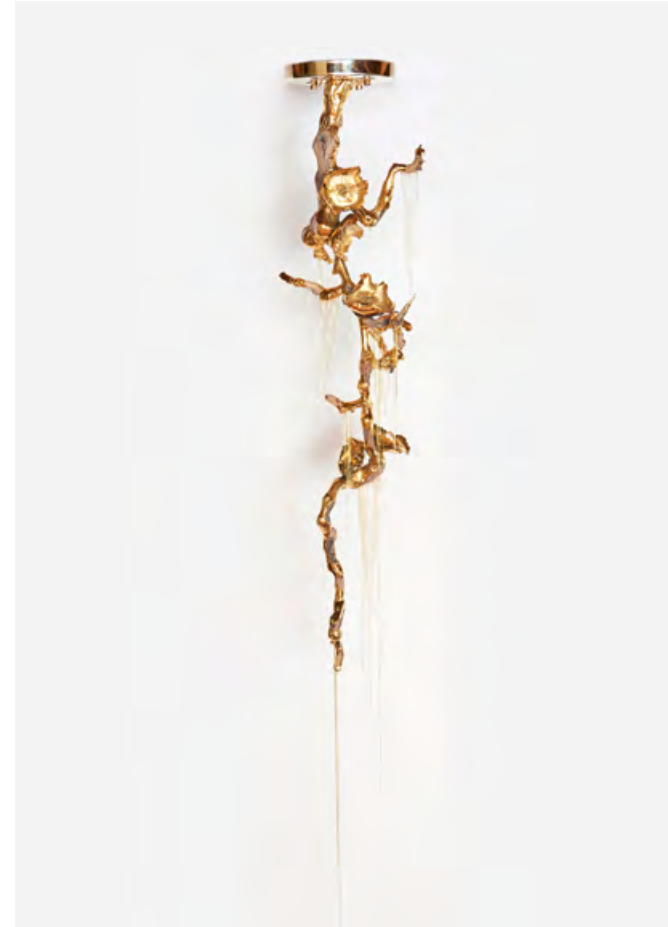
Available in: San Francisco Los Angeles



BLUE WHALE



CONSTELLATION FLOWERS IN COPPER



SHOUMEI LIGHT SCULPTURE



KALEIDOSCOPE

J LISTON DESIGN



TOTEM COFFEE TABLE

J LISTON DESIGN is a design and fabrication studio committed to creating high quality furniture and art. John honed his skills over 15 years in custom glass and metal foundries before opening his studio in San Francisco in 2012. Combining experience from jewelry, metalsmithing, foundry, and glass casting, John's designs take influence from architecture, industrial formations and natural objects. Bringing function to the forefront, each piece is designed without excess, executing clean and clear forms handcrafted by John in San Francisco.



BISHOP TABLES



CHARRED WOOD CABINET



ARCHITECT SIDE TABLE/STOOL



BATTEN PENDANT



RIBBON CHAIR

J MCDONALD



CHIMERA BENCH & CHAIR

J McDonald is an artist and designer based in Brooklyn, NY. His work explores the intersections of the built environment, the natural world, and human psychology, examining the complex relationship between humanity and nature. Drawing on his background in architecture and environmental design, craft and metalwork, conceptual art and sculpture – McDonald’s practice brings rational, architectural geometries into dialogue with intuitive, organic forms – creating dynamic and refined works of art that challenge perceptions of space, materiality, and the human experience.





HIVE LAMP



TERRACE MIRROR



CUBE VARIATIONS 5



HEXACORALLIA LUXUS

J.M. SZYMANSKI



TABLE NO. 15 ALTO

J.M. Szymanski is a maker & designer of one of a kind furniture and objects. The studio introduces radical new shapes and explores new materials and textures. Each work demonstrates a fascination with unique geometries, raw materials, and unusual forms. J.M. Szymanski was introduced in 2014 and has attracted the attention of top architects, interior designers, and collectors.

Jake Michael Szymanski lives in New York City where he designs and fabricates his work. His design education began in his early childhood where he and his family spent seven years in Nepal. Later, in his early 20's, he moved to Spain where he studied the designs of Gaudi, visited the Alhambra, and made frequent trips to Morocco. Jake returned to the USA to study interior design. He studied at the Fashion Institute of Technology and at the School of Visual Art. He went on to design for William Sofield.





SPIRIT TABLE



FLORA NO. 4



MIRROR NO. 4



BAR STOOL

KALLIOPI LYDAKI



CERAMIC FISH INSTALLATION

Kalliopi Lydaki was born in 1963 in Athens, Greece. She began studying art as a young adult, focusing on pictorial arts and sculpture in the atelier of the Greek painter Jiorgos Vogiatzis in Athens. During a trip to Crete, she met the ceramicist, Alda Reis. Inspired by the work in Alda's studio, she began training in ceramics, eventually opening an atelier in Chania, Crete, creating sculptures in porcelain and stoneware at high temperatures. In 2012, she moved her atelier permanently to Florence and started working on a "light art" collection, dedicating herself to making creations in porcelain and clay with glazes made from precious metals. These small ceramic sculptures have inspired her to create large wall installations of different sizes and orientations, enhancing their three-dimensionality by playing with color and light.





THE RABBIT



THE GUINI FOWL



THE POODLE

KELLY FARLEY



ICE SCULPTURE AT COUP D'ETAT LA

Kelly Farley is a renowned ceramist and the founder of Pope Valley Ceramics. Kelly creates large-scale suspended sculptures; each artwork is one of a kind and entirely hand-made in his Pope Valley, Napa studio. The ceramic spheres go through an elaborate firing process using a Japanese style kiln called an Anagama. This process enables ash and other elements to serendipitously affect the variety of surfaces and patina of the spheres. Once the firing process is completed, the spheres are assembled according to Farley's vision of how they will interact in the installation environment.



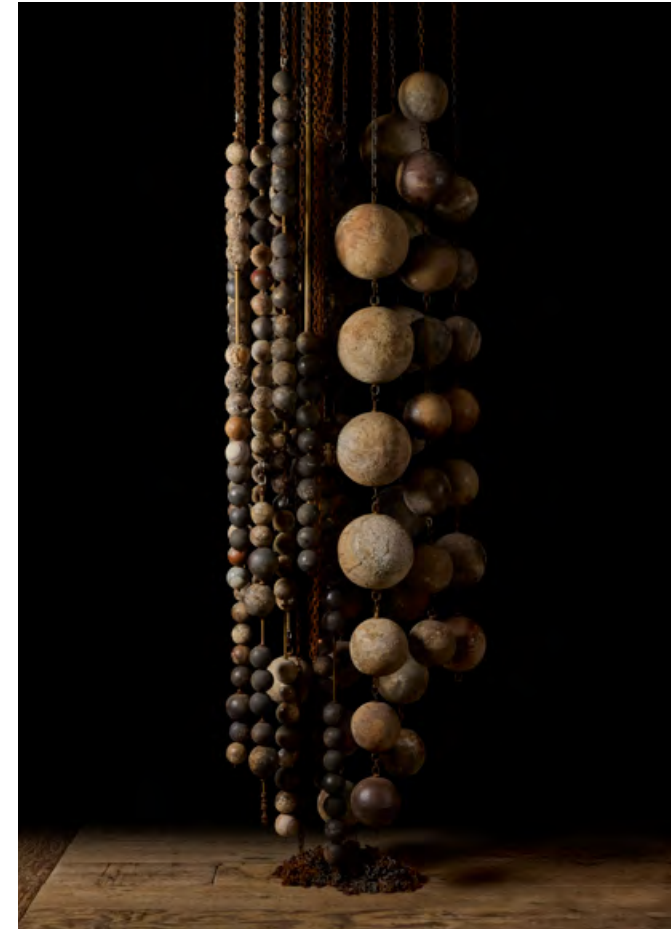
CENTAURI DREAMS



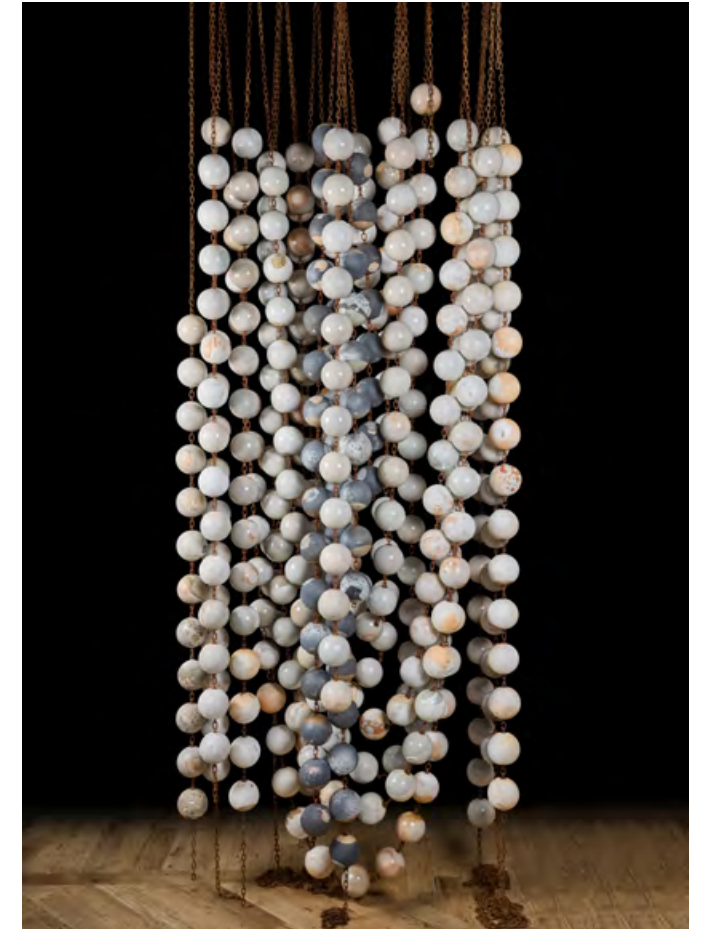
ICE



BLACK CLUSTER



GRAVITY



PART 2

KONEKT



KONEKT TEAM

Konket furniture and lighting are meticulously crafted by artisans with a carefully applied attention to detail. Handmade in Pennsylvania from natural materials that age and patina gracefully, each piece is informed by high-quality craftsmanship and distinguished by an embedded human touch. Unexpected materials like horsehair and chainmail are combined with traditional ones, highlighting the juxtaposition of contrasting textures and finishes.



THING 3 OTTOMAN & RIB LAMPS

Available in:

San Francisco

Los Angeles



THING 3 STOOL



ARMOR PENDANT

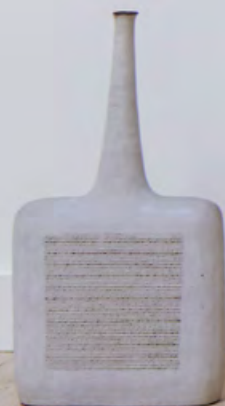


DIONIS DRINKS TABLE



A.CEPA MIRROR

LESLIE NIX



EHLANZENI(SOLD*) & TEMBA

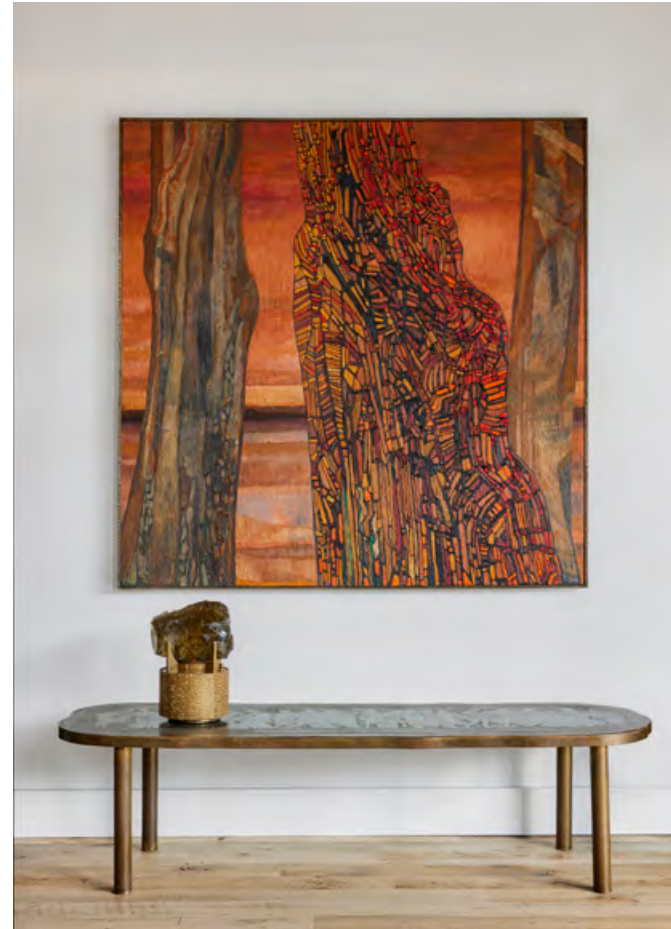
Los Angeles-based artist Leslie Nix is known for her singular personal style. With an interest in transformative materials, her process relies on experimentation, working in the mediums of oil on canvas, bronze, and glass. Her paintings, sculptural lamps, and decorative objects are influenced by her travels, including experiences in Africa. Nix received her BFA from the Savannah College of Art and Design.



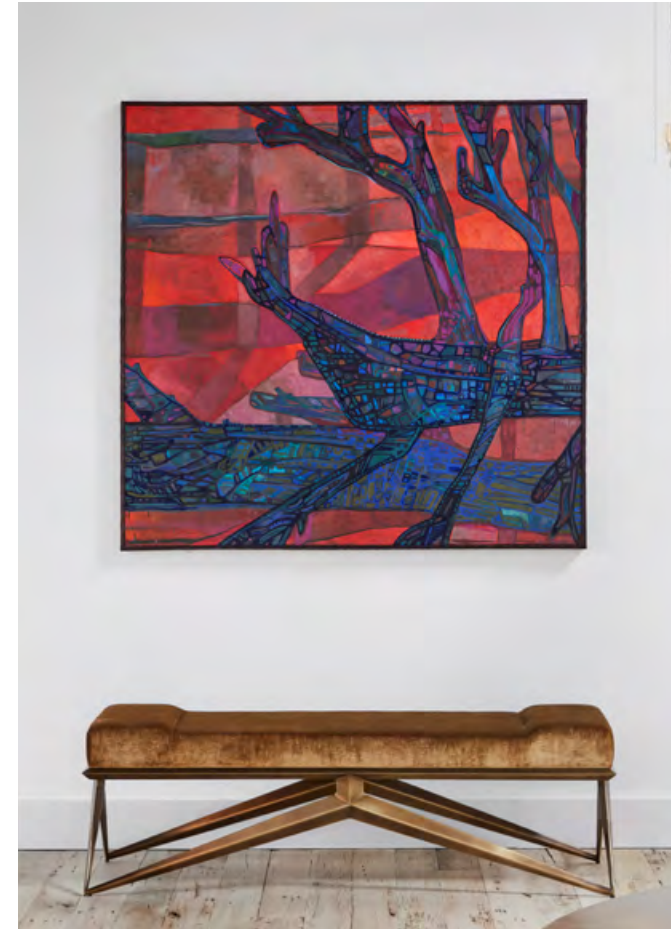
LESLIE NIX



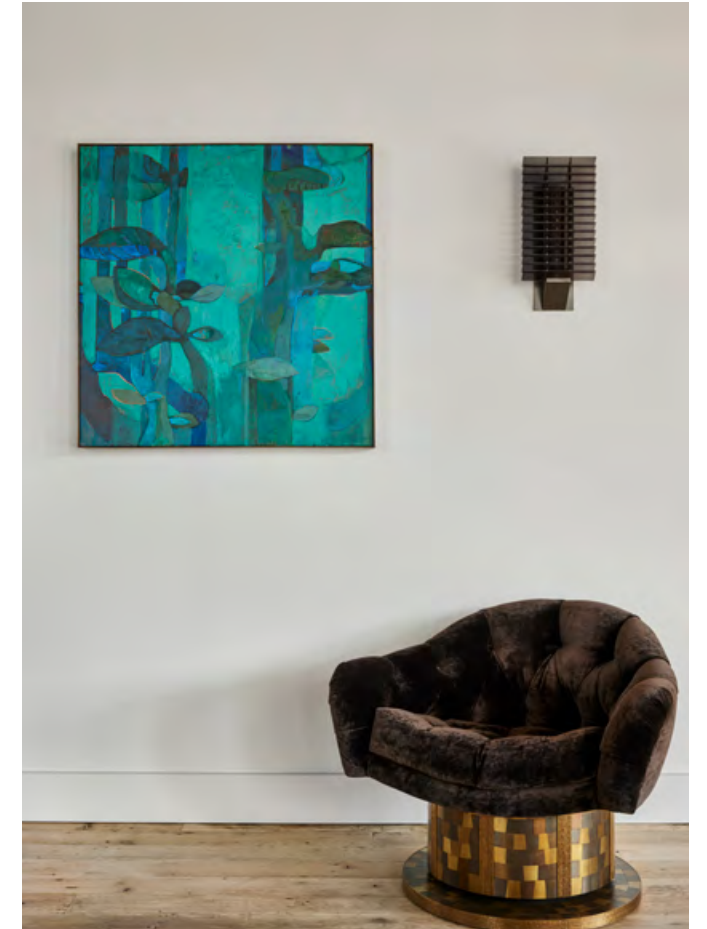
MUMAR



TEMBA



HAZYVIEW



CERULEAN MOODS

LINDA FAHEY



ASSORTMENT OF VESSELS

Linda Fahey is a ceramic artist and proprietor of Yonder Studio in San Francisco.

Linda creates sculptural and functional ceramics, specializing in hand-built forms with illustrative surfaces. With a background in illustration, Linda takes her drawings to the surface of her vessels and ceramic tiles. Linda's talent is sought after for large-scale site-specific projects, including custom tile design. She incorporates design influences directly from a life lived on the northern California coast and from her deep respect of the natural world.



CUSTOM TILE INSTALLATION AT COUP D'ETAT LA



URCHIN BOULE



SERPENTS



CUSTOM TILE PANEL



CUSTOM TILE PANEL

MARY WONG



MELANGE SIDE TABLES

Mary Wong is a Philadelphia-based artist and furniture designer whose work fuses stained glass with naturally finished wood, creating sculptural pieces that exist at the intersection of fine art and functional design. Influenced by her background in theater and textile design, each work is a singular composition—featuring hand-drawn geometric patterns and carefully selected materials that ensure no two are ever the same.

Wong's pieces invite viewers and collectors alike to experience everyday objects as thoughtfully crafted works of art.



MELANGE COFFEE TABLE



MELANGE STOOLS



MARGARET COFFEE TABLE



MELANGE TALL SIDE TABLE

MNEME



LUMARA COLLECTION

MNEME by Patrick James Curry unfolds as a meditation on memory, transformation, and the quiet persistence of form. Drawing on the artist's fascination with primordial beauty and the unseen life of matter, the collection blurs the line between sculpture and mythology. Curry's biomorphic creations emerge as relics from an imagined world—dreamlike and unfamiliar, yet imbued with an innate sense of recognition.

The inaugural LUMARA Collection introduces these forms through illumination. Inspired by lunar caves and atemporal rock formations, each work evokes the quiet suggestion of life blooming in the unlikeliest places. Sculpted in bronze and glass, the pieces capture a dialogue between the organic and the otherworldly—botanical, mineral, and something in between. Through light, Curry reveals the delicate resilience and transformative energy embedded within his imagined terrain.



LUMARA NO.02



LUMARA NO.05



LUMARA NO.01



LUMARA NO.03

OCHRE



MOONLIGHT MURMURATION

OCHRE creates objects of style and beauty which are both timeless and contemporary.

The collection consists of furniture, lighting and accessories with emphasis on the use of high quality craftsmanship. The simplicity and honesty of form, together with the luxurious materials, result in an understated elegance which has become the signature of OCHRE.



ARCTIC PEAR CHANDELIER & ETERNAL DREAMER SOFA



MEDUSA BLOOM



SABLE STOOLS



SEED CLOUD & CARIBOU CHAIR



GAIA PENDANT & SNOOZE SOFA

OCHRE WILD



SAMUEL BERDMO
Died 20th Jan^{ry} 18
Aged 62

MARRIA BERDMO
Wife of the a
Died 2nd Feb^r
Aged 7

8
C
K

The OCHRE WILD collection showcases a captivating array of rugs, crafted in Bengal using ancient techniques and natural dyes. Every OCHRE WILD rug is meticulously handcrafted, from the initial yarn-making and dyeing process to the intricate weaving and finishing touches. Both the Indo-Tibetan and flat-weave Dhurrie rugs are made with a diverse selection of fibers and natural dyes, resulting in a harmonious display of colors and textures. Each rug is a one-of-a-kind creation, embodying sustainable practices and a profound connection to our shared Earth.





QUORA



KERALA PINK



AQUA CHIMES



MUGHAL YELLOW

PATRICK WEDER



OUTSIDE IN CREDENZA

Swiss-born (New York City-based) designer Patrick Weder creates furniture pieces that balance natural and artisanal processes in an elegant and unassuming way. His choice of wood is a vital part of each design. He selects the wood very carefully, using mainly maple or walnut, considering the wood grain and texture and how they relate to his concept for the final object. Each piece is one-of-a-kind and created by Patrick in his Brooklyn studio. With his great passion for nature and the environment, Weder maintains a focus on sustainability and selective designs built to endure through the ages.



HONEYCOMB LIGHT SCULPTURE



KAVRN STOOL



KAVRN COCKTAIL TABLE



OUTSIDE IN WALL UNIT

PETER BOIGER



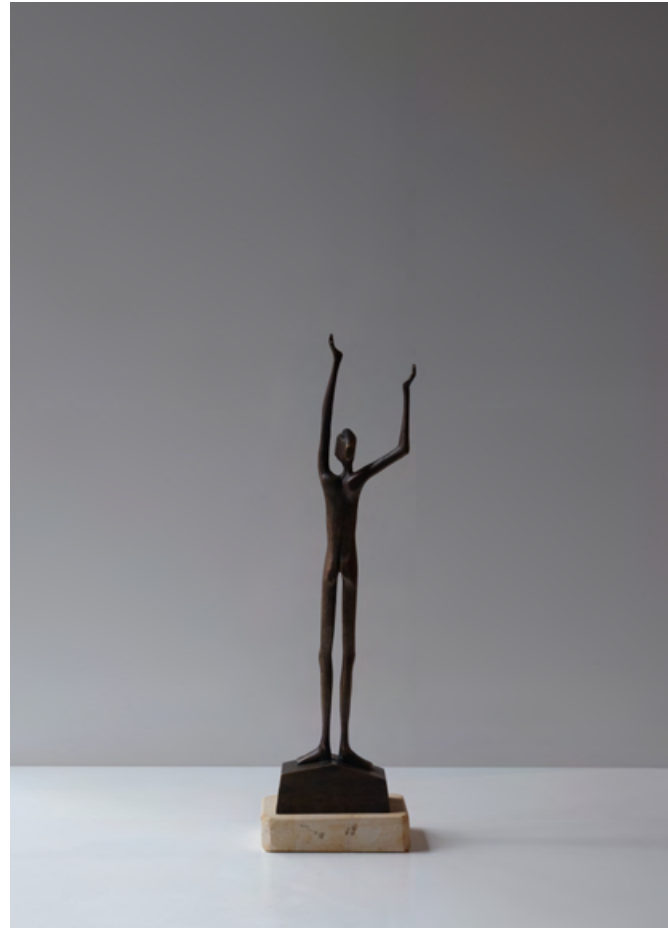
Peter Boiger is an internationally renowned sculptor, best known for his Holocaust Memorial in Jerusalem. Born in Altotting, Germany, Boiger currently resides and works in Northern California. Boiger learned woodworking at his grandfather's carpentry shop. When he was about 15, he became aware of the works of Henry Moore and other 20th-century sculptors. Peter's influences include African, Japanese, and pre-Columbian cultures. He works in several mediums: bronze, stone, and wood. Coup d'Etat has been honored to represent select works from the Peter Boiger Collection since 2012.



WIND PLOW III



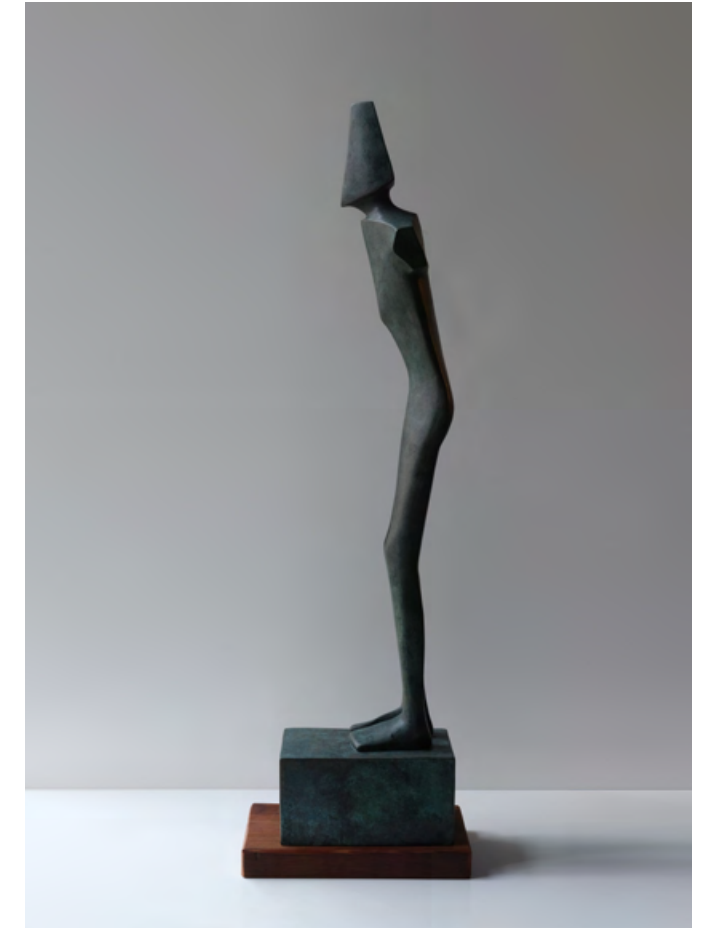
TRANSCENDING I



INVOCATION II



BLACK SENTRY



AUGUR I

REFRACTORY



COUP D'ETAT LA

Founded in 2021 by Angie West from Texas and Alberto Vélez from Bogotá, Refractory is a furniture, lighting, and object design studio based in Chicago. The studio conceives and produces rigorously crafted works in a language that is distinct within American and contemporary design landscapes. Layering traditional methods with modern tools, Refractory is both an evolution and an extension of a community of artisans who seek to create in the space where art meets collectible design.



PROMONTORY COCKTAIL TABLE & SYNTH BOWLS

Available in:

San Francisco

Los Angeles



SLOOP CANDLE HOLDERS



CYPHER HANGING LIGHTS



OKENITE SCONCE NO.2



PROMONTORY STANDING LAMP

ROSE GOLD SOCIETY



EQUINOX NO.1

Magnus Schevene, the founder and creative director of Rose Gold Society, has long been passionate about illumination in all its forms. His work straddles the line between sculpture and design, taking inspiration from dance and contemporary design trends. Combining handcrafted materials like cast glass with the strong industrial beauty of machine-milled metal components, his lighting designs create radiant warmth while underscoring a passion for engaging spatial forms.

The Equinox design lends itself to infinite custom applications. Each fixture is hand-forged and assembled by expert craftsmen in California. Schevene designed each component, including the LED light diffusers; they are formulated and poured by hand, using craft techniques that yield qualities unattainable by manufactured processes.



MAGNUS SCHEVENE



EQUINOX NO.1

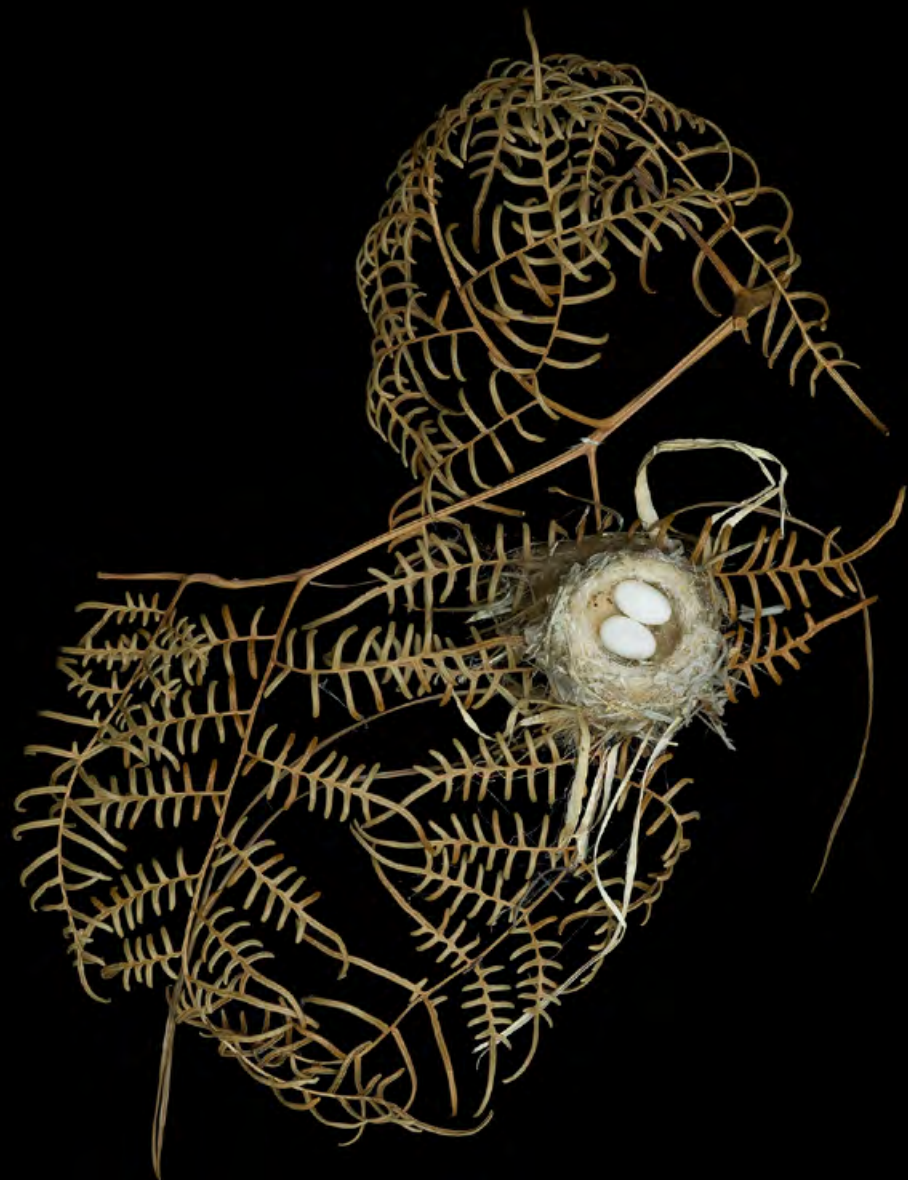


EQUINOX NO.2



EQUINOX NO.3

SHARON BEALS



CUBAN EMERALD, ANAS ACUTA 023 AND CASPIAN TERN

San Francisco-based photographer Sharon Beals has been photographing nineteenth and twentieth century bird nests preserved in museum and science collections since 2007. She is the author and photographer of *Nests: Fifty Nests and the Birds That Built Them*. Beals is compelled to photograph nests for their form and the spectacular color of bird eggs. Her images provide insight into the beauty and mystery of nature's extraordinary architects. In addition to nests, Beals photographs wild native habitats and watersheds, and most recently, serpentine coastal fault lines. She uses her images to create awareness of native habitats as well as river and ocean conservation.





PIRANGA LUDOVICIANA



BARN SWALLOW NEST (HIRUNDO RUSTICA)



TREE SWALLOW NEST

SKRAM



SADDLESTOOLS

Skram Furniture Company, founded in 2001, is based in the Piedmont region of North Carolina. The company has earned a domestic and international following for its distinctive approach to modern design—one that emphasizes sustainable practices, authentic materials, and extraordinary workmanship.

Skram craftsmen utilize a mix of traditional techniques and cutting-edge fabrication processes to create products that meet the highest standards of precision and durability. With expertise in a wide range of materials—including timber, hardwood veneer, assorted metals, leather, and stone—the company's products are uniquely suited to diverse settings. Skram's furnishings are specified in a broad range of environments from residential to commercial and hospitality.



FOUNDER, DESIGNER — A. JACOB MARKS

Available in:

San Francisco

Los Angeles



WYANDOTTE GUEST CHAIR



ALTAI SIDE TABLES



PIEDMONT CHEST ON STAND



TIGRIS BED



Studio NAWA is a new creative partnership between Alina Nazmeeva and John Wagner, based in Chicago, Illinois. This collaboration fuses Alina's background as a media artist with John's expertise as an architect, merging their passions for digital simulation and material assembly.

Together, their creative process is non-linear, oscillating between material and digital experimentation. Intuitive and visceral, yet deeply research-based, their work combines a range of techniques and materials, from analog and digital fabrication experiments with stainless steel and textiles, to working with gaming engines, augmented and virtual reality.



SALONE SATELLITE 2025



ARTICLE 01 - STAND



ARTICLE 02 - TABLE



ARTICLE 03 - CHAIR

COUP D'ETAT

SAN FRANCISCO

III RHODE ISLAND STREET, SUITE I
SAN FRANCISCO, CA 94103

P. 415-241-9300



COUPDETATSF.COM

COUP D'ETAT

LOS ANGELES

6600 LEXINGTON AVE
LOS ANGELES, CA 90038

P. 323-825-5880



IG @COUPDETATSF

