



A hand-blown glass pendant hangs from an elegant, arcing curve – both cloaked in chainmail to strike a balance between strength and delicacy. A rectangular base grounds the lamp, featuring a dimmer knob to control the luminescent glow.

Armor Floor Lamp

Dimensions

28.5"W x 8"D x 81.5"H

Materials

Glass, brass, steel, stainless steel chainmail

Finishes

Satin brass, antique brass, oil-rubbed bronze, satin black, satin nickel, antique nickel

Lamping

120V | E26 screw base | max 40W

Inquire for 240V

Bulb included

3W dimmable LED bulb/210 lumens/2200K

Dimmer

Integrated dimmer switch on base

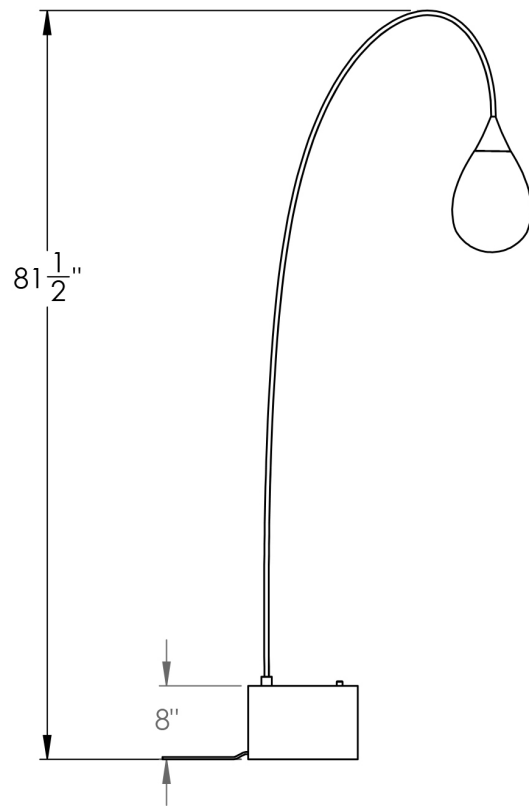
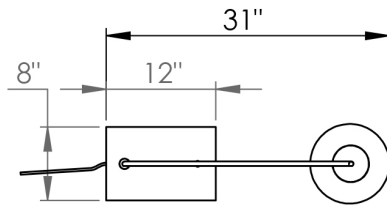
Cord

12"L black cord

Additional cord colors available upon request

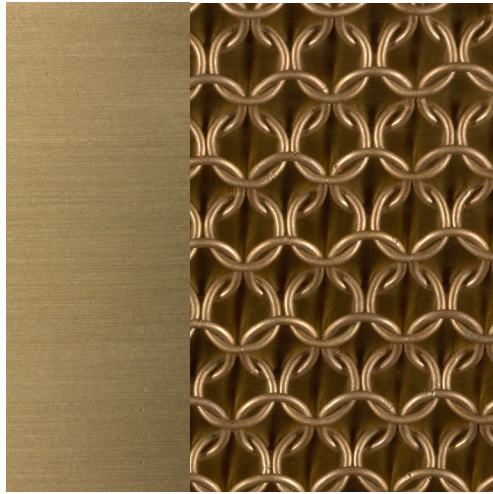
Lead time

10-14 weeks

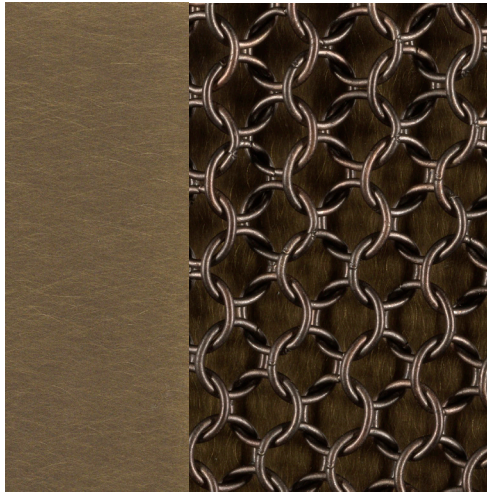


Chainmail omitted from drawing for clarity

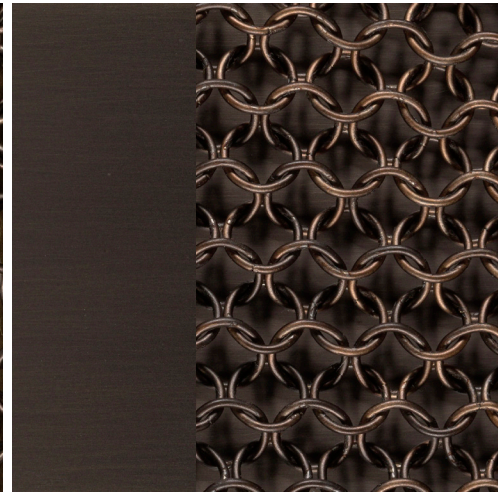




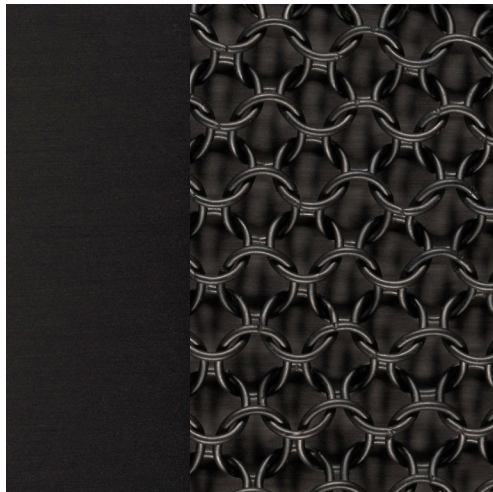
Satin Brass



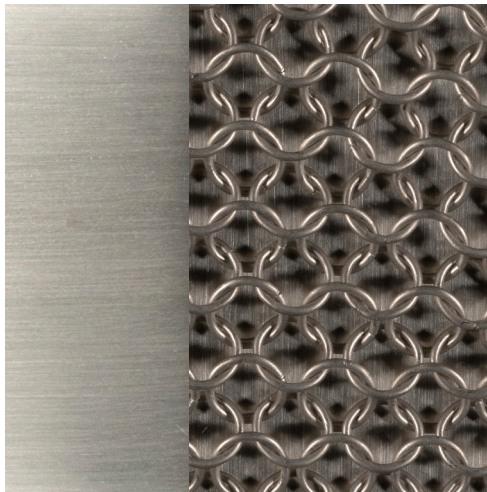
Antique Brass



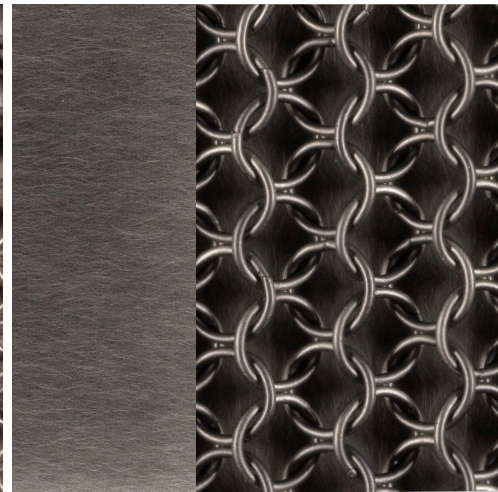
Oil-Rubbed Bronze



Satin Black



Satin Nickel



Antique Nickel