

Inspired by the need to escape the demands of daily life, the sculptural Pause Chaise Lounge encourages you to indulge in a book, a nap, or quiet reflection. Hand-stitched upholstery and machined solid brass legs demonstrate meticulous craftsmanship. Designed to embrace the body, the organic contours of the chaise complement the human form while creating a feeling of lightness. *Made by hand in Pennsylvania.*



Pause Chaise Lounge

Dimensions

66"L x 25"W x 41.5"H

Materials

fiberglass shell, foam cushioning, brass

Upholstery

*graded-in fabric or COM

Finishes

satin brass, *polished brass, antique brass, oil-rubbed bronze, satin black, satin nickel, antique nickel or polished nickel

Lead time

8-12 weeks

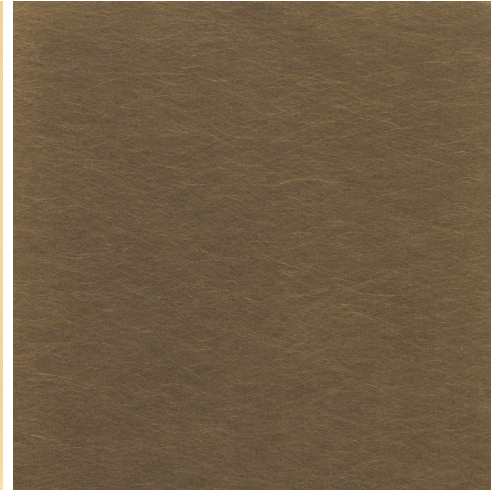
*Polished brass is left unlacquered as a live finish, in order to allow a rich, natural patina to develop over time. Lacquered finish available upon request.



Satin Brass



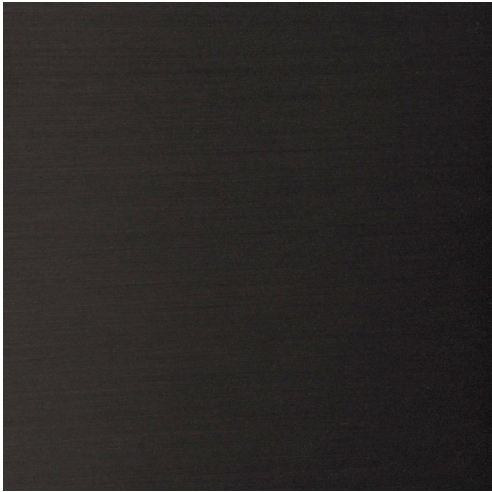
Polished Brass



Antique Brass



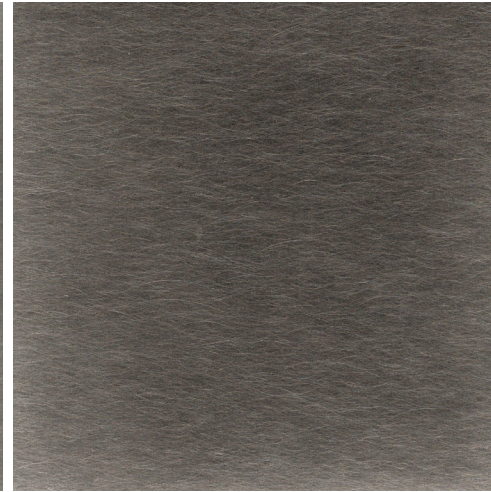
Oil-Rubbed Bronze



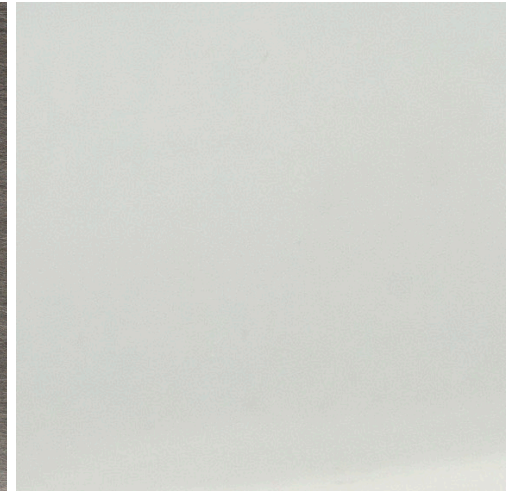
Satin Black



Satin Nickel



Antique Nickel



Polished Nickel